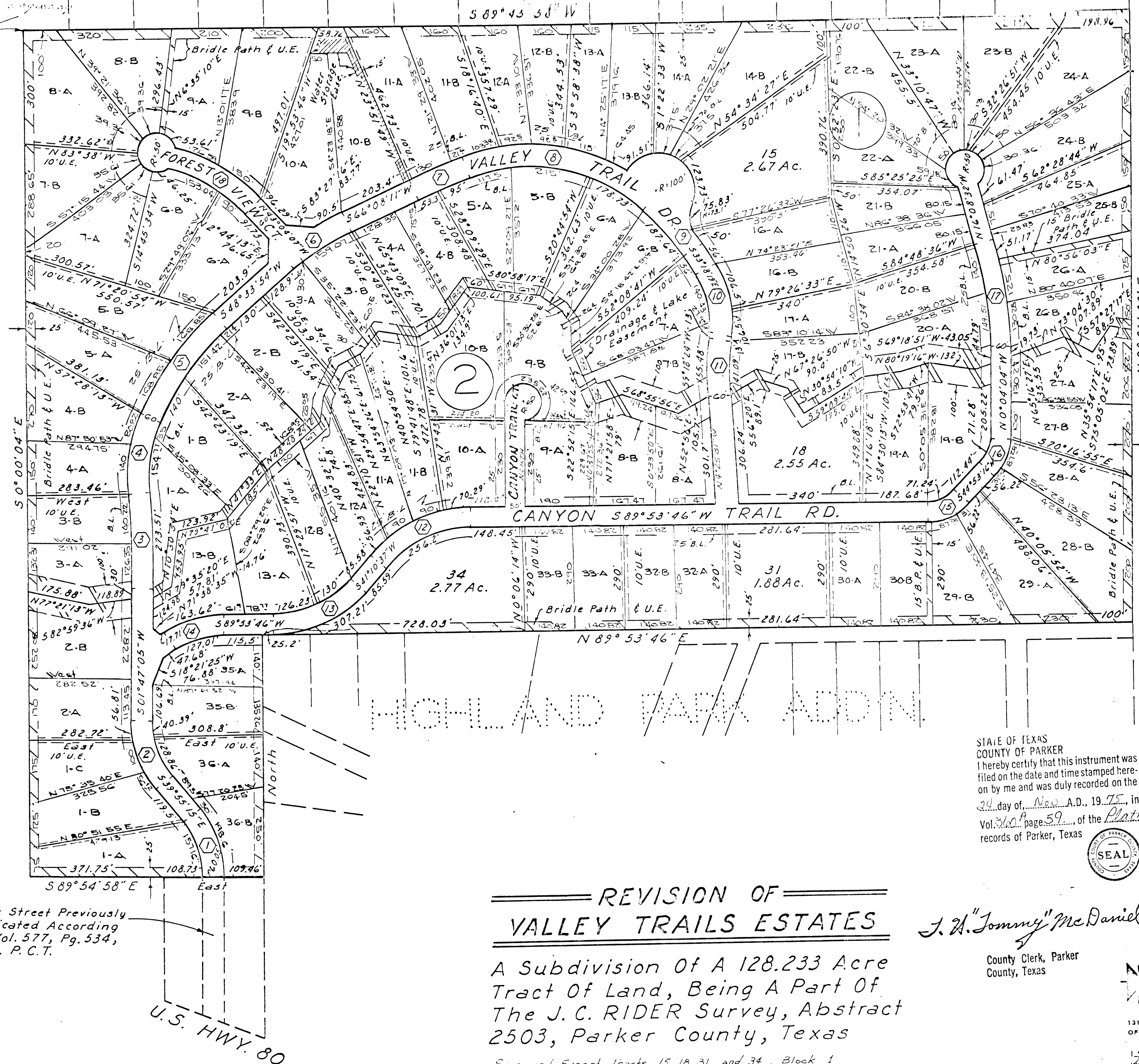


# VALLEY TRAILS ESTATES



### CURVE DATA

Δ	R	T
①	39° 55' 15"	275.34' 100.00'
②	41° 43' 20"	262.52' 100.04'
③	6° 37' 30"	2335.41' 135.17'
④	29° 39' 04"	396.69' 105.00'
⑤	23° 45' 15"	784.54' 165.00'
⑥	17° 34' 17"	647.03' 100.00'
⑦	3° 09' 45"	2716.90' 75.00'
⑧	61° 49' 50"	500.96' 300.00'
⑨	15° 33' 55"	720.69' 98.50'
⑩	42° 36' 43"	256.41' 100.00'
⑪	13° 43' 55"	618.72' 74.50'
⑫	48° 43' 01"	331.31' 150.00'
⑬	48° 43' 01"	331.31' 150.00'
⑭	34° 57' 51"	238.14' 75.00'
⑮	45° 00' 30"	120.69' 50.00'
⑯	44° 57' 20"	120.84' 50.00'
⑰	16° 04' 28"	1042.30' 150.00'
⑱	32° 02' 20"	464.62' 133.40'

Note: This Street Previously Dedicated According To Vol. 577, Pg. 534, D.R. P.C.T.

# HIGHLAND PARK ADDN.

## REVISION OF VALLEY TRAILS ESTATES

A Subdivision Of A 128.233 Acre Tract Of Land, Being A Part Of The J. C. RIDER Survey, Abstract 2503, Parker County, Texas

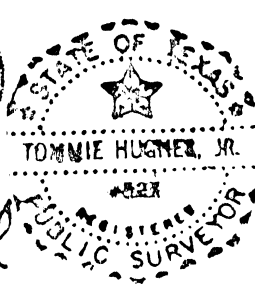
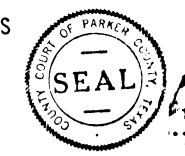
Save and Except Tracts 15, 18, 31, and 34, Block 1  
Developed By VILLAGE CREEK DEVELOPERS, Arlington, Texas

43483

A-211

RECEIVED AND FILED FOR RECORD  
At 5 O'Clock P.M.  
NOV 24 1975  
T. H. "Tommy" McDaniel, Co. Clerk  
PARKER COUNTY, TEXAS  
By J.H. Deputy

STATE OF TEXAS  
COUNTY OF PARKER  
I hereby certify that this instrument was filed on the date and time stamped hereon by me and was duly recorded on the 24 day of Nov. A.D., 1975, in Vol. 560, page 59, of the Platt records of Parker, Texas



J. H. "Tommy" McDaniel  
County Clerk, Parker County, Texas

HUGHES AND ASSOCIATES  
LAND SURVEYING  
CIVIL ENGINEERING  
LAND PLANNING  
131 W. CHURCH STREET OFFICE 44-5374 WEATHERFORD, TEXAS HOME 594-2183

I certify that this map was prepared from field notes of an actual survey made by me or under my supervision and to the best of my knowledge and belief represents said survey.