

CURVE	LENGTH	CHORD BRG.	RADIUS	DATA
C1	42.83	S84°40'42"E	25.0'	088.2'
C2	61.07	S84°51'34"W	25.0'	098.2'
C3	18.23	S75°36'14"W	25.0'	037.2'
C4	31.82	N75°36'14"E	48.0'	037.2'
C5	47.17	S80°00'00"E	25.0'	108.0'
C6	31.82	S75°36'14"W	25.0'	037.2'
C7	61.07	N84°51'34"E	48.0'	071.8'
C8	133.97	N80°00'00"W	120.0'	084.0'
C9	35.34	S79°30'00"W	45.0'	045.0'
C10	70.68	S12°00'00"W	45.0'	090.0'
C11	38.27	N12°00'00"E	25.0'	108.0'
C12	31.85	S88°28'58"E	25.0'	073.0'
C13	13.70	N72°42'12"E	25.0'	031.4'
C14	28.60	S72°42'12"W	64.0'	031.4'
C15	8.53	N87°54'58"E	25.0'	021.8'
C16	17.82	S34°35'02"W	25.0'	040.8'

CURVE	LENGTH	CHORD BRG.	RADIUS	DATA
C17	31.85	N88°28'58"W	25.0'	073.0'
C18	63.43	S84°28'58"E	48.0'	073.0'
C19	38.27	N78°00'00"W	25.0'	088.0'
C20	7.85	N24°00'00"W	25.0'	018.0'
C21	31.82	N21°00'00"E	25.0'	073.0'
C22	28.48	N88°00'00"E	25.0'	068.2'
C23	60.28	S88°22'58"W	48.0'	068.2'
C24	8.82	N87°50'17"E	25.0'	021.8'
C25	47.17	S88°00'00"E	25.0'	108.0'
C26	31.82	N21°00'00"E	25.0'	073.0'
C27	7.85	N24°00'00"W	25.0'	018.0'
C28	38.27	N78°00'00"W	25.0'	088.0'
C29	47.17	S88°00'00"E	25.0'	108.0'
C30	28.30	N18°13'53"E	25.0'	060.8'
C31	42.89	S8°57'22"W	48.0'	048.8'
C32	28.83	N0°57'22"E	25.0'	087.8'

CURVE	LENGTH	CHORD BRG.	RADIUS	DATA
C33	38.27	S12°00'00"W	25.0'	088.0'
C34	18.39	N24°00'00"W	48.0'	018.0'
C35	38.27	S78°00'00"E	25.0'	088.0'
C36	38.28	N21°28'02"E	25.0'	073.0'
C37	111.84	N88°00'00"W	100.0'	068.0'
C38	18.87	S78°00'00"W	25.0'	048.8'
C39	38.27	S12°00'00"W	25.0'	088.0'
C40	18.81	S11°42'32"E	24.8'	042.8'
C41	31.85	S88°28'58"E	25.0'	073.0'
C42	46.88	N3°30'04"E	25.0'	107.0'
C43	31.85	N88°28'58"W	25.0'	073.0'
C44	46.88	S3°30'04"W	25.0'	107.0'
C45	31.85	S88°28'58"E	25.0'	073.0'
C46	46.88	N3°30'04"E	25.0'	107.0'
C47	31.85	N88°28'58"W	25.0'	073.0'
C48	18.82	S30°58'55"E	25.0'	038.1'

FINAL PLAT

Approved by the City of Willow Park for filing at the office of the County Clerk of Parker County, Texas.

RECOMMENDED BY:

David Tate
Signature of Chairperson

Planning and Zoning Commission
City of Willow Park, Texas

6/15/12
Date of Recommendation

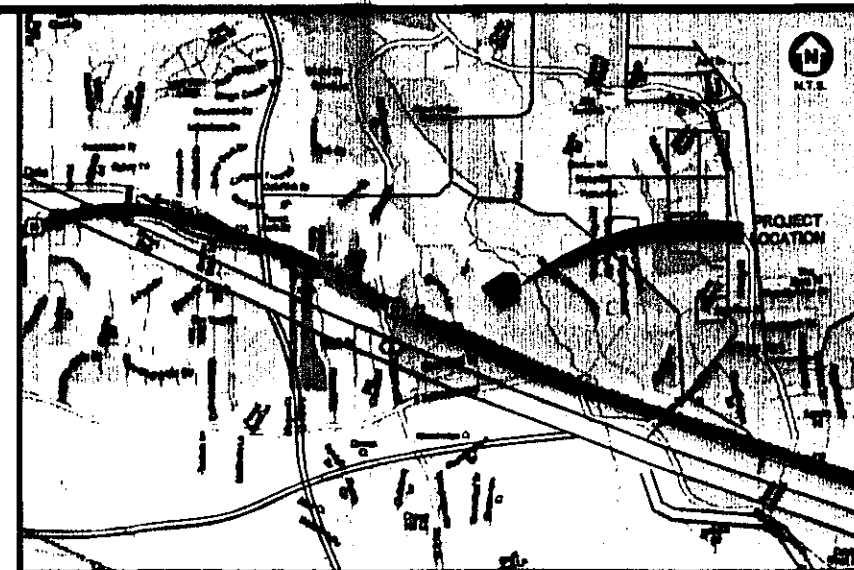
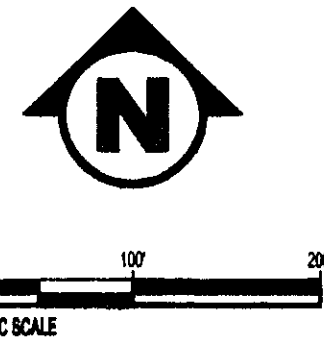
APPROVED BY:

Mavis Slayton
Signature of Mayor

6/14/12
Date of Approval

Joel Hoffman
City Secretary

Camille Scott
City Administrator

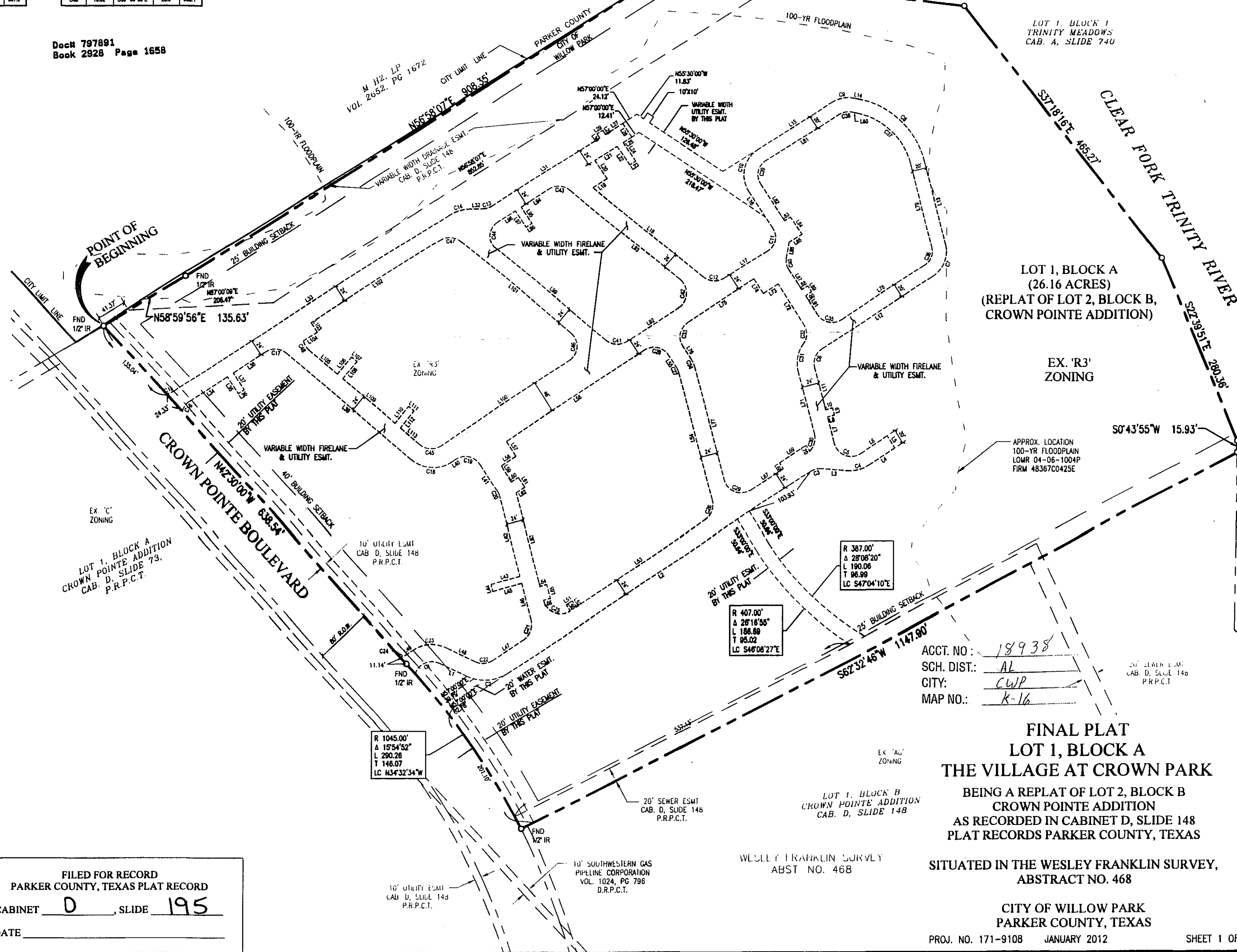


LOCATION MAP

LINE	BEARING	LENGTH
L1	S84°40'42"E	43.28'
L2	N57°00'00"E	512.37'
L3	S85°47'32"E	37.88'
L4	N57°00'00"E	43.88'
L5	S33°00'00"E	20.00'
L6	N57°00'00"E	44.81'
L7	S18°00'00"E	37.13'
L8	N74°52'12"E	10.00'
L9	S18°00'00"E	10.00'
L10	N74°52'12"E	10.00'
L11	S18°00'00"E	61.17'
L12	S57°00'00"W	186.33'
L13	S14°01'58"E	127.81'
L14	N78°00'00"W	7.08'
L15	N57°00'00"E	124.80'
L16	N33°00'00"W	63.03'
L17	N57°00'00"E	72.64'
L18	S48°58'51"E	205.00'
L19	S57°00'00"W	23.81'
L20	S33°00'00"E	32.31'
L21	S57°00'00"W	37.81'
L22	S33°00'00"E	32.86'
L23	S57°00'00"W	10.00'
L24	S33°00'00"E	32.98'
L25	S57°00'00"W	14.73'
L26	S33°00'00"E	24.00'
L27	N57°00'00"E	28.80'
L28	S33°00'00"E	7.27'
L29	N57°00'00"E	10.00'
L30	S33°00'00"E	7.27'
L31	N57°00'00"E	181.80'
L32	N88°28'25"E	20.01'
L33	N57°00'00"E	488.88'
L34	S57°00'00"W	64.19'
L35	S33°00'00"E	28.50'
L36	N57°00'00"E	10.00'
L37	N33°00'00"W	28.80'
L38	S57°00'00"W	54.81'
L39	N48°58'51"W	231.42'
L40	S57°00'00"W	8.88'
L41	N33°00'00"W	45.22'
L42	N18°00'00"W	113.84'
L43	N78°00'00"E	42.80'
L44	S18°00'00"E	10.00'
L45	N78°00'00"E	42.80'
L46	N18°00'00"W	51.35'
L47	N57°00'00"E	52.54'
L48	S44°40'42"E	45.21'
L49	N58°54'23"E	11.58'
L50	S33°00'00"E	10.00'
L51	N57°00'00"E	10.00'
L52	S33°00'00"E	10.00'
L53	N57°00'00"E	218.85'
L54	N18°00'00"W	185.81'
L55	N33°00'00"W	20.41'
L56	S57°00'00"W	233.85'
L57	S33°00'00"E	25.00'
L58	S57°00'00"W	25.00'
L59	S33°00'00"E	28.88'
L60	S57°00'00"W	11.71'

LINE	BEARING	LENGTH
L61	N33°00'00"W	16.88'
L62	S57°00'00"W	14.71'
L63	S18°00'00"E	132.88'
L64	N74°56'28"E	10.00'
L65	S18°00'00"E	20.00'
L66	N74°56'28"E	10.00'
L67	N57°00'00"E	65.18'
L68	N33°00'00"W	10.00'
L69	N57°00'00"E	46.00'
L70	N33°00'00"W	8.48'
L71	N18°00'00"W	88.18'
L72	N33°00'00"W	67.80'
L73	S57°00'00"W	25.00'
L74	N33°00'00"W	25.00'
L75	S57°00'00"W	111.40'
L76	S33°00'00"E	20.41'
L77	S18°00'00"W	181.87'
L78	N57°00'00"E	140.18'
L79	N14°01'58"W	127.81'
L80	N78°00'00"W	7.08'
L81	S57°00'00"W	124.80'
L82	S33°00'00"E	63.03'
L83	N57°00'00"E	72.64'
L84	N33°00'00"W	30.48'
L85	N57°00'00"E	21.81'
L86	S09°39'38"W	23.80'
L87	S33°00'00"E	34.18'
L88	S57°00'00"W	10.00'
L89	S33°00'00"E	10.00'
L90	S57°00'00"W	29.40'
L91	S33°00'00"E	30.81'
L92	N57°00'00"E	86.78'
L93	N48°58'51"W	205.00'
L94	S57°00'00"W	47.38'
L95	N58°58'50"E	218.12'
L96	N33°00'00"W	28.80'
L97	S33°00'00"E	16.88'
L98	S57°00'00"W	23.32'
L99	S48°58'51"E	81.82'
L100	S40°00'00"W	31.85'
L101	S40°00'00"W	97.62'
L102	S40°00'00"W	30.00'
L103	S40°00'00"W	10.00'
L104	S40°00'00"W	30.00'
L105	S40°00'00"W	30.00'
L106	S40°00'00"W	30.00'
L107	S40°00'00"W	30.00'
L108	S40°00'00"W	30.00'
L109	S40°00'00"W	30.00'
L110	S40°00'00"W	30.00'
L111	S40°00'00"W	30.00'
L112	S40°00'00"W	30.00'
L113	S40°00'00"W	30.00'

Doc# 797891
Book 2928 Page 1658



ACCT. NO.: 18938
SCH. DIST.: AL
CITY: CWP
MAP NO.: K-16

FINAL PLAT
LOT 1, BLOCK A
THE VILLAGE AT CROWN PARK
BEING A REPLAT OF LOT 2, BLOCK B
CROWN POINTE ADDITION
AS RECORDED IN CABINET D, SLIDE 148
PLAT RECORDS PARKER COUNTY, TEXAS

SITUATED IN THE WESLEY FRANKLIN SURVEY,
ABSTRACT NO. 468

CITY OF WILLOW PARK
PARKER COUNTY, TEXAS

BARRON-STARK
CONSULTING ENGINEERS, LP
CIVIL ENGINEERING • LAND SURVEYING
6221 Southwest Boulevard, Suite 100
Fort Worth, Texas 76132
(O) 817.231.8100 (F) 817.231.8144
Texas Registered Engineering Firm P-10968
www.barronstark.com

FILED FOR RECORD
PARKER COUNTY, TEXAS PLAT RECORD
CABINET D, SLIDE 195
DATE _____