

WESTERN LAKE ESTATES

C. W. BROWN SUR.

BLK. I

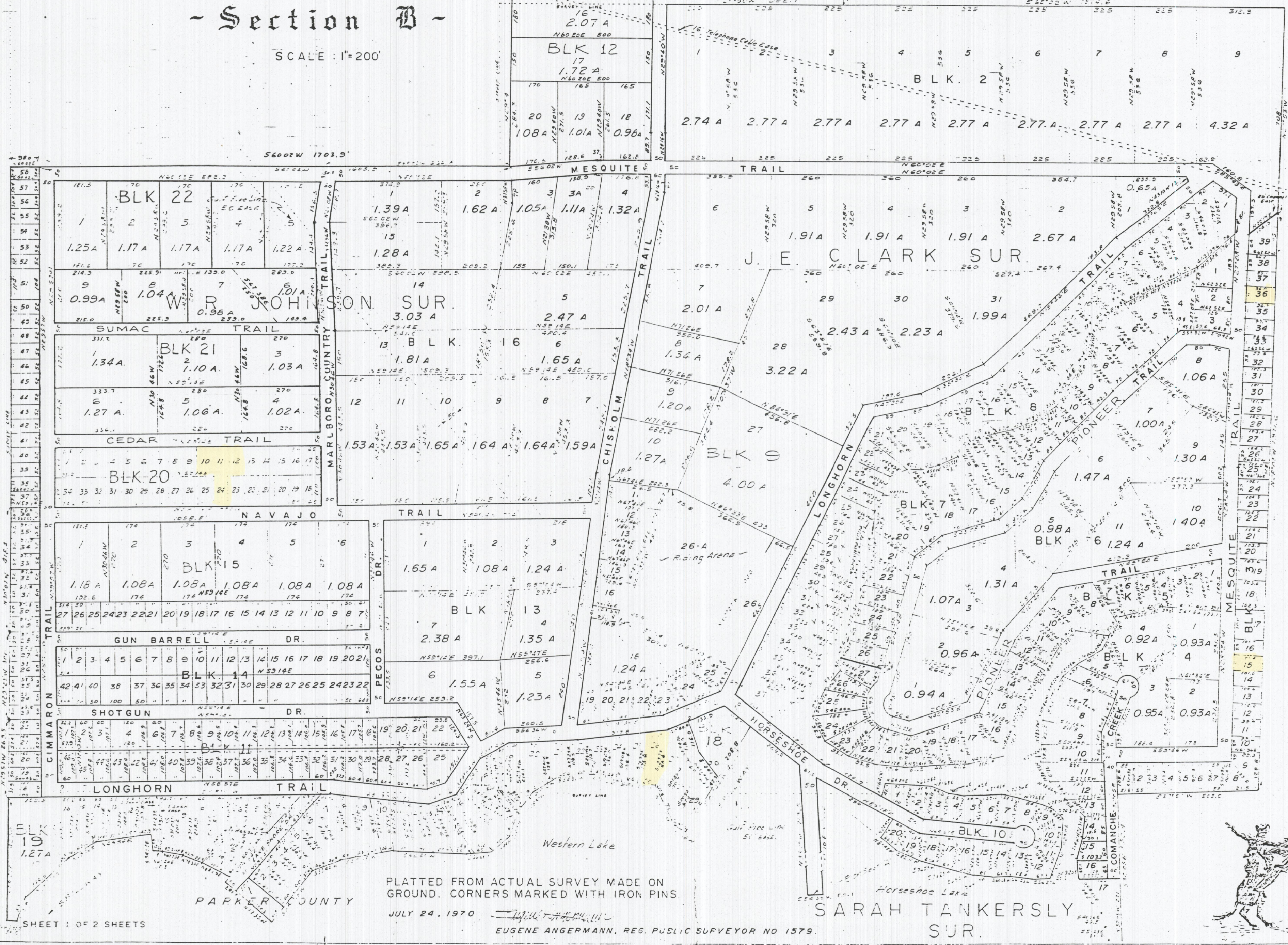
( SEE SHEET 2 FOR CONTINUATION )

PARKER COUNTY

- Section B -

SCALE: 1"=200'

E. MEYERS SUR.



PLATTED FROM ACTUAL SURVEY MADE ON GROUND. CORNERS MARKED WITH IRON PINS.

JULY 24, 1970

EUGENE ANGERMANN, REG. PUBLIC SURVEYOR NO 1579.

SARAH TANKERSLY SUR.

