

Legal Description
 Approximately 181.64+- acres out of the Francis Haller Survey, Abstract No. 567, situated in the Eastern Part of Parker County, Texas.

Developer:
 Windy Hill Development
 Lee Thurman
 150 Dear Creek
 Annetta, Texas, 76008
 Phone: 817-441-1637
 Fax: 817-441-8612

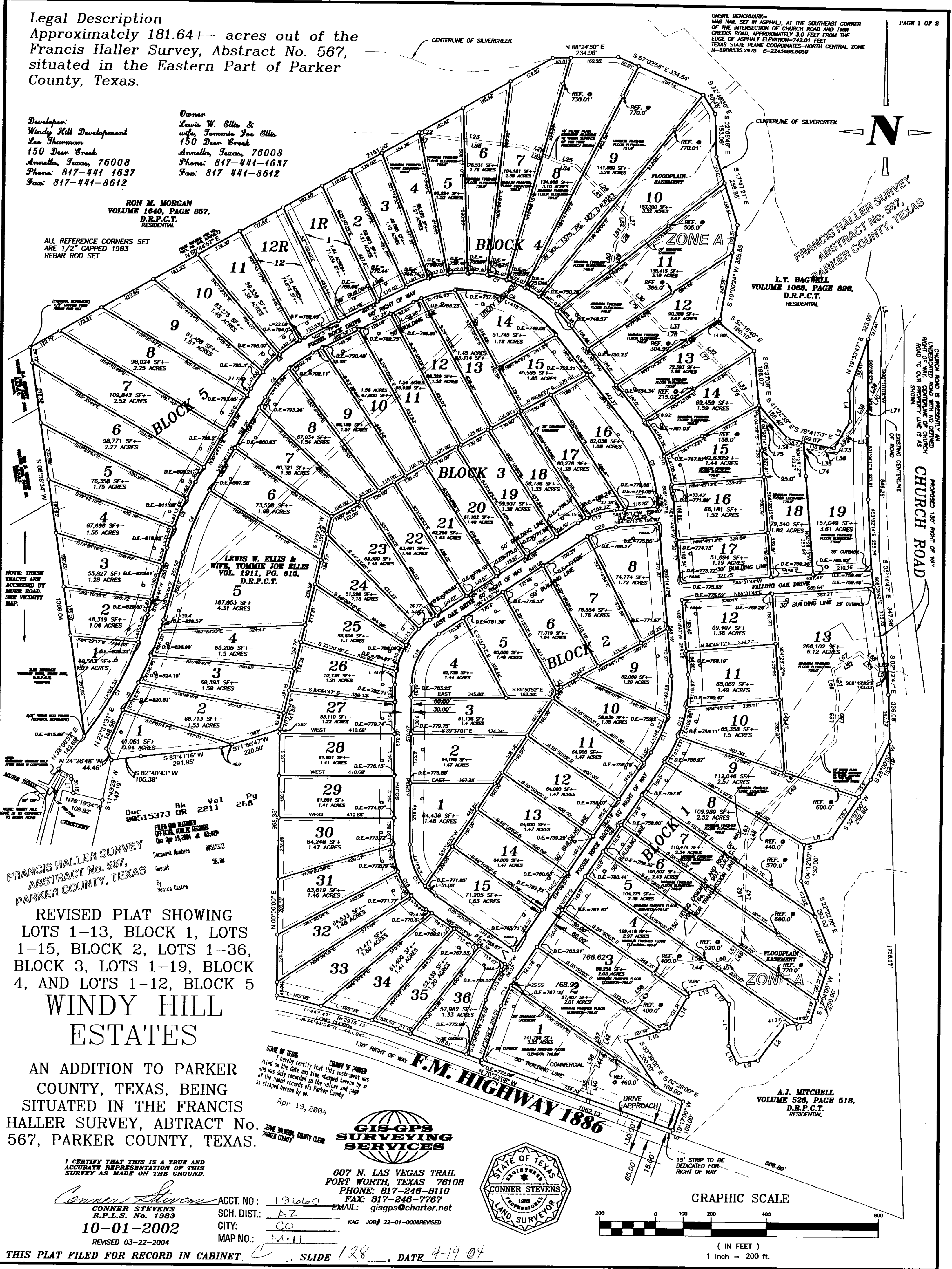
Owner:
 Lewis W. Ellis &
 wife, Tommie Joe Ellis
 150 Dear Creek
 Annetta, Texas, 76008
 Phone: 817-441-1637
 Fax: 817-441-8612

RON M. MORGAN
 VOLUME 1640, PAGE 857,
 D.R.P.C.T.
 RESIDENTIAL

ALL REFERENCE CORNERS SET
 ARE 1/2" CAPPED 1983
 REBAR ROD SET

L.T. BAGWELL
 VOLUME 1068, PAGE 898,
 D.R.P.C.T.
 RESIDENTIAL

A.J. MITCHELL
 VOLUME 526, PAGE 518,
 D.R.P.C.T.
 RESIDENTIAL



NOTE: THESE TRACTS ARE
 ACCESSED BY
 MUDR ROAD.
 SEE VICINITY
 MAP.

Doc 06515373 OR 2211 Pg 268
 FILED AND RETURNED
 OFFICIAL PUBLIC RECORDS
 On Apr 13, 2004 at 8:30 AM
 Document Number: 06515373
 Record: 56.36
 By Monica Castro

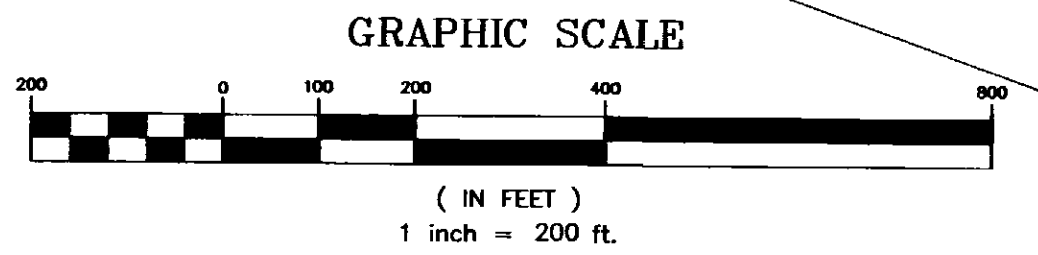
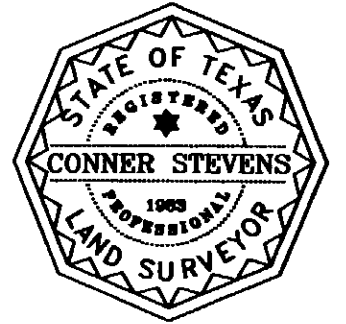
REVISED PLAT SHOWING
 LOTS 1-13, BLOCK 1, LOTS
 1-15, BLOCK 2, LOTS 1-36,
 BLOCK 3, LOTS 1-19, BLOCK
 4, AND LOTS 1-12, BLOCK 5
WINDY HILL
ESTATES

AN ADDITION TO PARKER
 COUNTY, TEXAS, BEING
 SITUATED IN THE FRANCIS
 HALLER SURVEY, ABTRACT No.
 567, PARKER COUNTY, TEXAS.

I CERTIFY THAT THIS IS A TRUE AND
 ACCURATE REPRESENTATION OF THIS
 SURVEY AS MADE ON THE GROUND.
 CONNER STEVENS
 R.P.L.S. No. 1983
 10-01-2002
 REVISED 03-22-2004

STATE OF TEXAS
 COUNTY OF PARKER
 I hereby certify that this instrument was
 filed on the date and time stamped hereon by me
 and was duly recorded in the volume and page
 of the record records of Parker County
 as stamped hereon by me.
 Apr 13, 2004
 JEROME BRUNSON, COUNTY CLERK
 PARKER COUNTY

GIS-GPS SURVEYING SERVICES
 607 N. LAS VEGAS TRAIL
 FORT WORTH, TEXAS 76108
 PHONE: 817-246-8110
 FAX: 817-246-7787
 EMAIL: gisgps@charter.net
 KAG JOB# 22-01-0008REVISED



THIS PLAT FILED FOR RECORD IN CABINET C, SLIDE 128, DATE 4-19-04