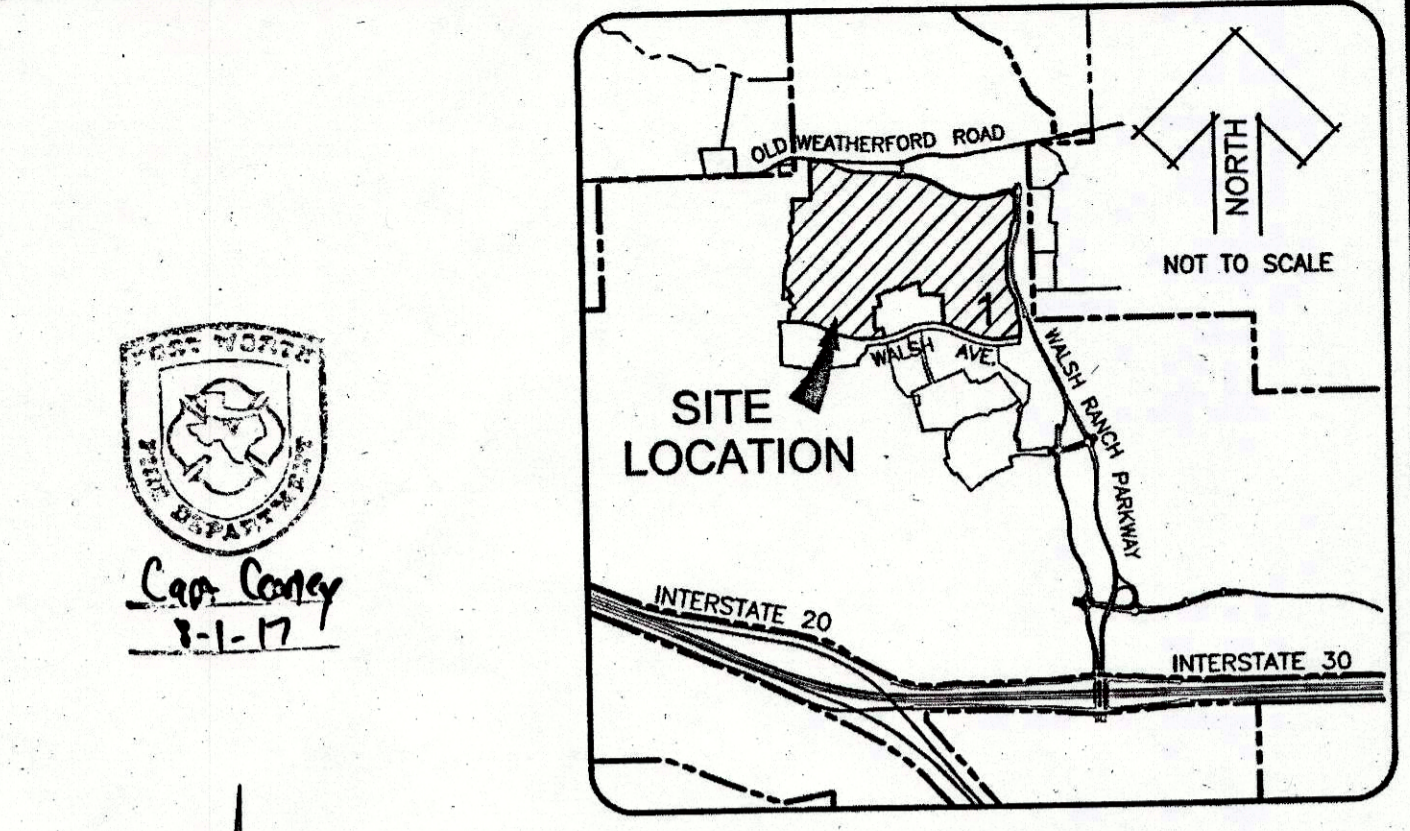
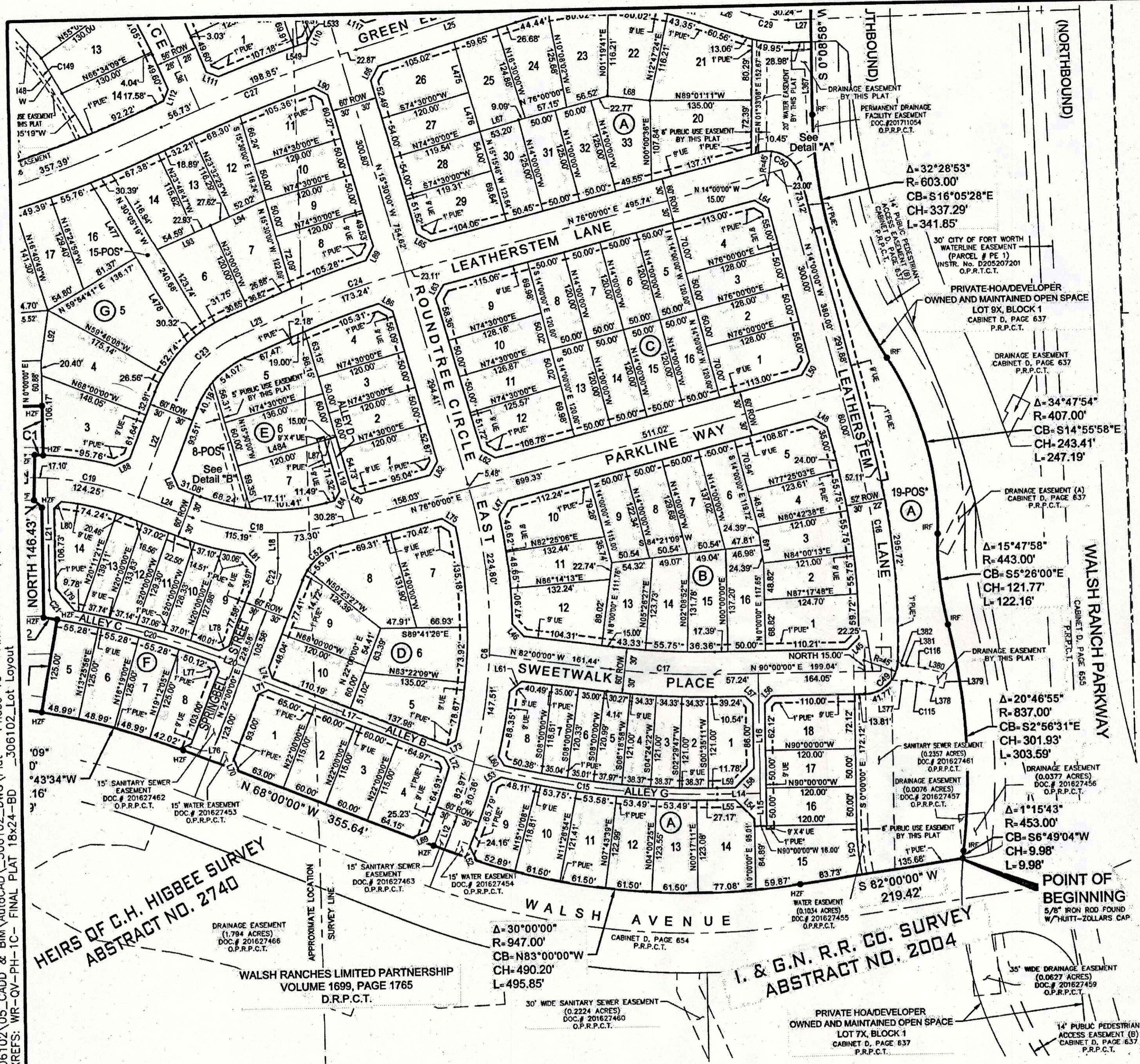


USER: boole  
 D:\HZFTWORTH\disk2\proj\R30306102\05\_CADD & BIM\AutoCAD\306102\_DWG\Plot - Phase 1C - Final Plat Temp\C3D-WR-QV-PH-1C-FINAL PLAT.dwg  
 D:\HZFTWORTH\disk2\proj\R30306102\05\_CADD & BIM\AutoCAD\306102\_DWG\Plot - Phase 1C - Final Plat 18x24-BD\_306102\_Lot Layout  
 XREFS: WR-QV-PH-1C-FINAL PLAT 18x24-BD  
 DWG: Jul 31, 2017 12:48pm  
 DATE:



**LEGEND**

- IRF - IRON ROD FOUND WITH PLASTIC CAP STAMPED "DUNAWAY ASSOC. LP" UNLESS NOTED OTHERWISE.
- HZF - 5/8" IRON ROD FOUND WITH PLASTIC CAP STAMPED "HUITT-ZOLLARS"
- IRS - 5/8" IRON ROD SET WITH PLASTIC CAP STAMPED "HUITT-ZOLLARS"
- MIN. FF - MINIMUM FINISH FLOOR
- PDE - PRIVATE DRAINAGE EASEMENT
- UE - UTILITY EASEMENT
- BL - BUILDING LINE
- 1-POS\* - PRIVATE HOA/DEVELOPER OWNED AND MAINTAINED OPEN SPACE & PRIVATE SIDEWALK ACCESS EASEMENT
- ◆ - DENOTES STREET NAME CHANGE
- D.R.P.C.T. - DEED RECORDS, PARKER COUNTY, TEXAS
- P.R.P.C.T. - PLAT RECORDS, PARKER COUNTY, TEXAS
- O.P.R.P.C.T. - OFFICIAL PUBLIC RECORDS, PARKER COUNTY, TEXAS
- 1" PUE\* - 1" WIDE PRIVATE UTILITY EASEMENT

**GRAPHIC SCALE IN FEET**

50 0 50 100

PLEASE REFER TO BAR SCALE. DRAWING MAY HAVE BEEN REDUCED OR ENLARGED.

**BASIS OF BEARINGS:** Bearings are based on the Texas State Plane Coordinate System, North Central Zone (4202) North American Datum 1983 (2011).

**FINAL PLAT  
 WALSH RANCH, QUAIL VALLEY**

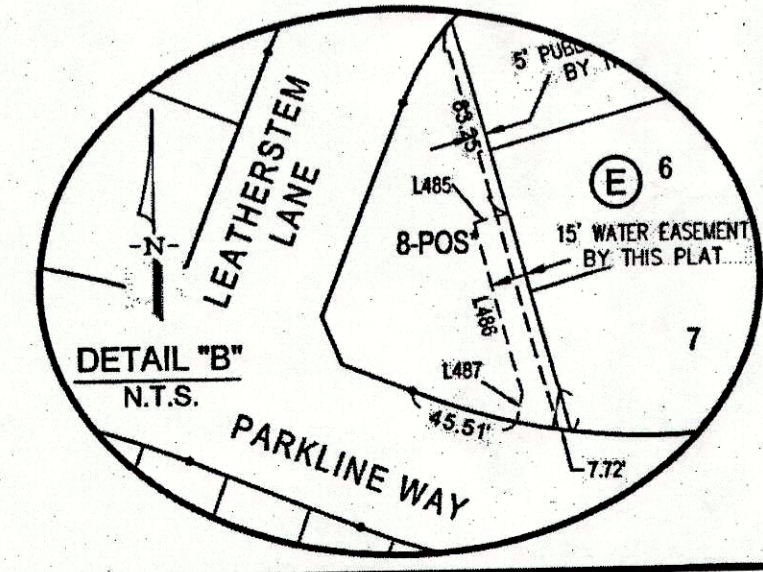
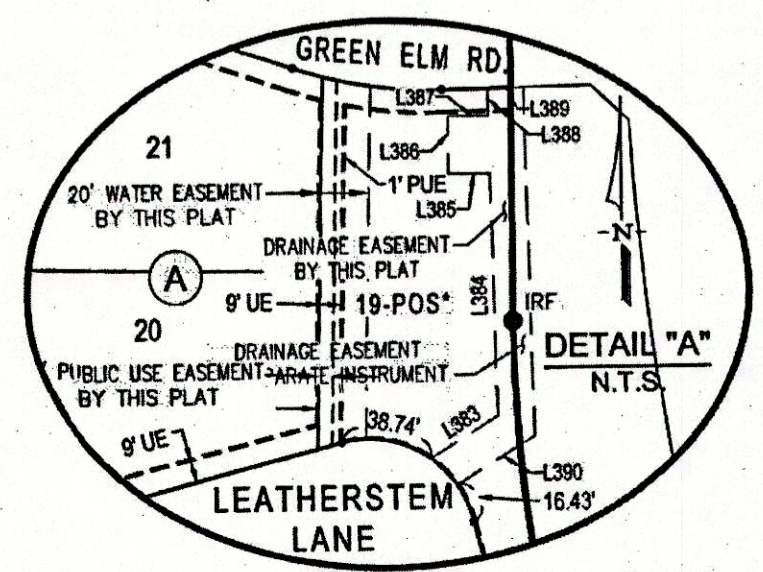
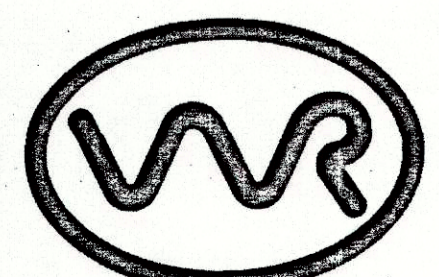
Lots 1 thru 33, Lot 19 POS\*, Block A, Lots 1 thru 16, Block B, Lots 1 thru 16, Block C, Lots 1 thru 10, Block D, Lots 1 thru 7, Lot 8 POS\*, Block E, Lots 5 thru 14, Block F, Lots 2 thru 14, Lots 16 thru 20, Lot 15 POS\*, Block G, Lots 1 thru 4, Lots 6 thru 33, Lots 40 thru 46, Lot 5 POS\*, Block H, Lots 1 thru 6, Lots 8 thru 13, Lots 15 thru 23, Lot 7 POS\*, Lot 14 POS\*, Block J, Lots 1 thru 4, Lots 6 thru 14, Lot 5 POS\*, Block K, Lots 1 thru 14, Lots 16 thru 21, Lots 23 thru 34, Lot 15 POS\*, Lot 22 POS\*, Block L, Lots 8 thru 10, Block M, Lots 4 thru 7, Lots 9 thru 27, Lot 8 POS\*, Block R, Lots 2 thru 25, Lot 1 POS\*, Block S, Lot 1 POS\*, Block T, Lots 1 thru 3, Lots 5 thru 20, Lot 4 POS\*, Block U, Lots 1 thru 6, Lots 8 thru 22, Lot 7 POS\* Block V, Lots 1 thru 8, Block W, Lots 1 thru 13, Block X, Lots 1 thru 7, Lots 9 thru 23, Lot 8 POS\*, Block Y, Lots 1 thru 18, Block Z, Lots 1 thru 8, Block AA, Lots 7 thru 16, Block AB, Lots 1 thru 13, Block AC, Lots 1 thru 8, Block AD, Lot 1 POS\*, Block AE, Lots 1 thru 8, Block AF, Lots 1 thru 3, Lots 5 thru 12, Lot 4 POS\*, Block AG, Lots 1 thru 15, Lots 17 thru 33, Lot 16 POS\*, Block AH, Lots 1 thru 7, Lots 9 thru 28, Lot 8 POS\*, Block AJ, Lot 1 POS\*, Block AL, Lot 1 POS\*, Block AM, Lot 1 POS\*, Block AN, Lot 1 POS\*, Block AP, Lot 1 POS\*, Block AQ, Lot 1 POS\*, Block AR

**177.98 ACRES**

**AN ADDITION TO THE CITY OF FORT WORTH,  
 PARKER COUNTY, TEXAS**

SITUATED IN THE  
**M.C. MOULTON SURVEY, ABSTRACT NO. 934,  
 HEIRS OF C.H. HIGBEE SURVEY, ABSTRACT NO. 2740,  
 I. & G.N. R.R. Co. SURVEY, ABSTRACT NO. 2004, I. & G.N. R.R. Co. SURVEY, ABSTRACT NO. 1996**

**\*\*NOTE:**  
 - SEE SHEET 12 FOR STANDARD NOTES & GENERAL NOTES.  
 - SEE SHEETS 10 & 11 FOR LINE & CURVE CALL TABLES.



ACCT. NO.: 19003  
 SCH. DIST.: AL  
 CITY: CEW  
 MAP NO.: M-15

201718887 PLAT Total Pages: 144

**D 756**

plat 774 replaces

**OWNER**  
**Quail Valley Devco I, LLC**  
 8401 NORTH CENTRAL EXPRESSWAY  
 SUITE 350, DALLAS, TEXAS 75225  
 PHONE: (214) 292-3410  
 FAX: (214) 292-3411

**PREPARED BY:**  
**HUITT-ZOLLARS**  
 Huitt-Zollars, Inc. Dallas  
 1717 McKinney Avenue, Suite 1400, Dallas, TX 75202  
 Phone (214) 871-3311 Fax (214) 871-0757

**JULY 2017 SHEET 1 OF 14**