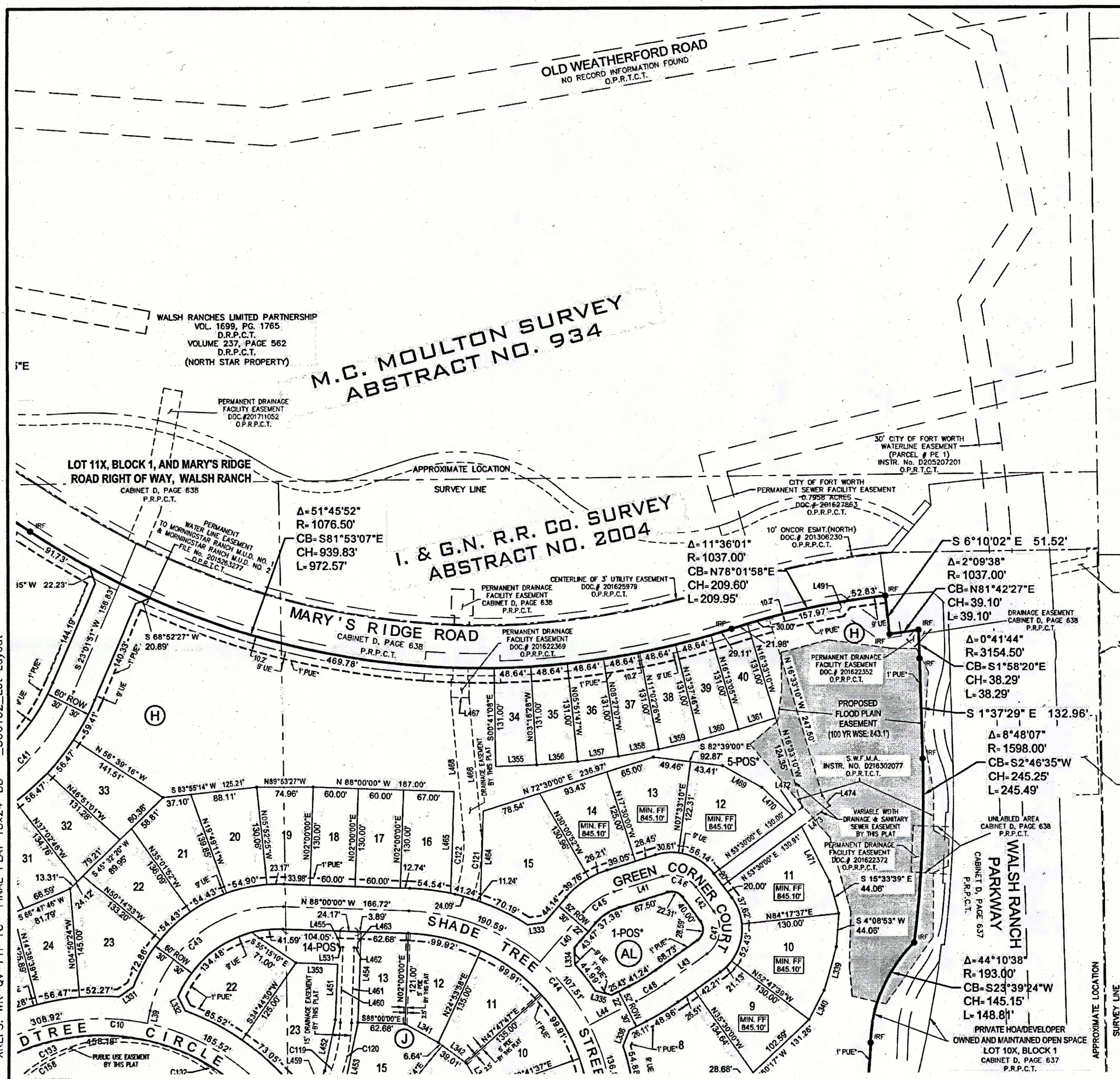
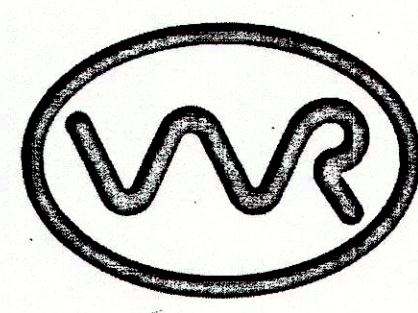


DWG: \\HZFTWORTH\disk2\proj\R30306102_05_CADD & BIM\AutoCAD\306102_DWG\Plat - Phase 1C - Final Plat Temp\C3D-WR-QV-PH-1C - FINAL PLAT.dwg
 DATE: Jul 31, 2017 12:52pm XREFS: WR-QV-PH-1C - FINAL PLAT 18x24-BD - 306102_Lot Layout USER: bcole



NOTE:
 - SEE SHEET 12 FOR STANDARD NOTES & GENERAL NOTES.
 - SEE SHEETS 10 & 11 FOR LINE & CURVE CALL TABLES.

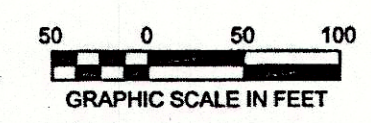
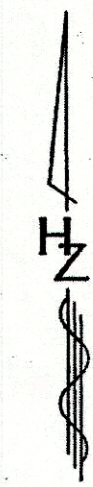
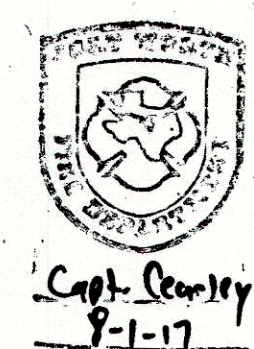


OLD WEATHERFORD ROAD
 NO RECORD INFORMATION FOUND
 O.P.R.T.C.T.

WALSH RANCHES LIMITED PARTNERSHIP
 VOL. 1699, PG. 1765
 D.R.P.C.T.
 VOLUME 237, PAGE 562
 D.R.P.C.T.
 (NORTH STAR PROPERTY)

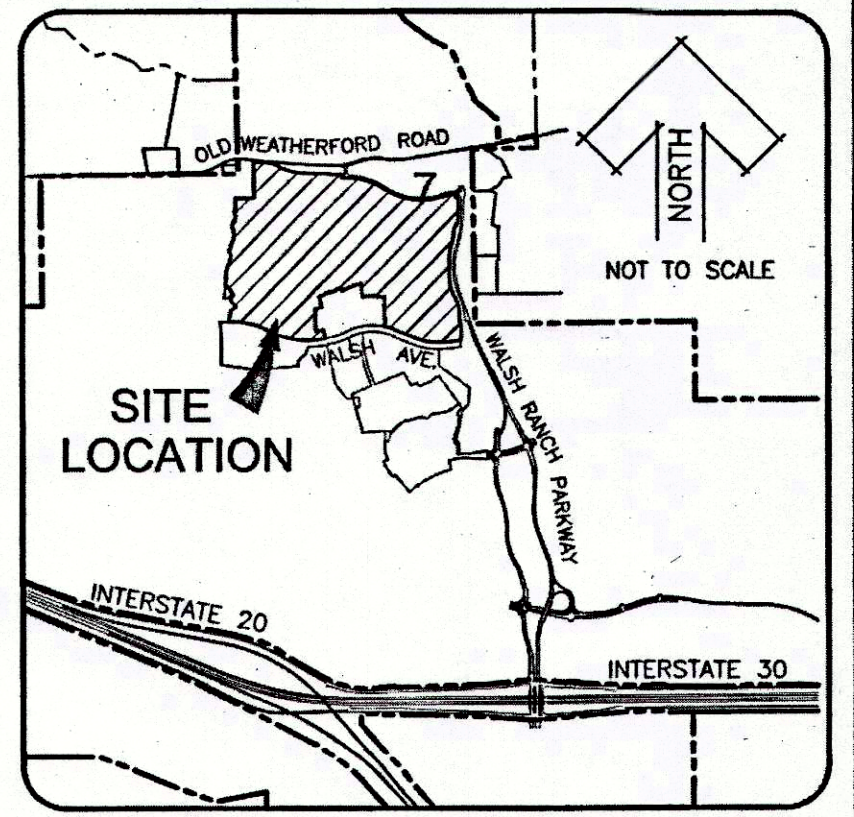
M.C. MOULTON SURVEY
 ABSTRACT NO. 934

I. & G.N. R.R. CO. SURVEY
 ABSTRACT NO. 2004



PLEASE REFER TO BAR SCALE. DRAWING MAY HAVE BEEN REDUCED OR ENLARGED.

BASIS OF BEARINGS: Bearings are based on the Texas State Plane Coordinate System, North Central Zone (4202) North American Datum 1983 (2011).



VICINITY MAP

LEGEND

- IRF - IRON ROD FOUND WITH PLASTIC CAP STAMPED "DUNAWAY ASSOC. LP" UNLESS NOTED OTHERWISE.
- HZF - 5/8" IRON ROD FOUND WITH PLASTIC CAP STAMPED "HUITT-ZOLIARS"
- IRS - 5/8" IRON ROD SET WITH PLASTIC CAP STAMPED "HUITT-ZOLIARS"
- MIN. FF - MINIMUM FINISH FLOOR
- PDE - PRIVATE DRAINAGE EASEMENT
- UE - UTILITY EASEMENT
- BL - BUILDING LINE
- 1-POS* - PRIVATE HOA/DEVELOPER OWNED AND MAINTAINED OPEN SPACE & PRIVATE SIDEWALK ACCESS EASEMENT
- ◆ - DENOTES STREET NAME CHANGE
- D.R.P.C.T. - DEED RECORDS, PARKER COUNTY, TEXAS
- P.R.P.C.T. - PLAT RECORDS, PARKER COUNTY, TEXAS
- O.P.R.P.C.T. - OFFICIAL PUBLIC RECORDS, PARKER COUNTY, TEXAS
- 1' PUE* - 1' WIDE PRIVATE UTILITY EASEMENT

FINAL PLAT
 WALSH RANCH, QUAIL VALLEY

Lots 1 thru 33, Lot 19 POS*, Block A, Lots 1 thru 16, Block B, Lots 1 thru 16, Block C, Lots 1 thru 10, Block D, Lots 1 thru 7, Lot 8 POS*, Block E, Lots 5 thru 14, Block F, Lots 2 thru 14, Lots 16 thru 20, Lot 15 POS*, Block G, Lots 1 thru 4, Lots 6 thru 33, Lots 40 thru 46, Lot 5 POS*, Block H, Lots 1 thru 6, Lots 8 thru 13, Lots 15 thru 23, Lot 7 POS*, Lot 14 POS*, Block J, Lots 1 thru 4, Lots 6 thru 14, Lot 5 POS*, Block K, Lots 1 thru 14, Lots 16 thru 21, Lots 23 thru 34, Lot 15 POS*, Lot 22 POS*, Block L, Lots 8 thru 10, Block M, Lots 4 thru 7, Lots 9 thru 27, Lot 8 POS*, Block R, Lots 2 thru 25, Lot 1 POS*, Block S, Lot 1 POS*, Block T, Lots 1 thru 3, Lots 5 thru 20, Lot 4 POS*, Block U, Lots 1 thru 6, Lots 8 thru 22, Lot 7 POS* Block V, Lots 1 thru 8, Block W, Lots 1 thru 13, Block X, Lots 1 thru 7, Lots 9 thru 23, Lot 8 POS*, Block Y, Lots 1 thru 18, Block Z, Lots 1 thru 8, Block AA, Lots 7 thru 16, Block AB, Lots 1 thru 13, Block AC, Lots 1 thru 8, Block AD, Lot 1 POS*, Block AE, Lots 1 thru 8, Block AF, Lots 1 thru 3, Lots 5 thru 12, Lot 4 POS*, Block AG, Lots 1 thru 15, Lots 17 thru 33, Lot 16 POS*, Block AH, Lots 1 thru 7, Lots 9 thru 28, Lot 8 POS*, Block AJ, Lot 1 POS*, Block AL, Lot 1 POS*, Block AM, Lot 1 POS*, Block AN, Lot 1 POS*, Block AP, Lot 1 POS*, Block AQ, Lot 1 POS*, Block AR

177.98 ACRES
 AN ADDITION TO THE CITY OF FORT WORTH,
 PARKER COUNTY, TEXAS

SITUATED IN THE
 M.C. MOULTON SURVEY, ABSTRACT NO. 934,
 HEIRS OF C.H. HIGBEE SURVEY, ABSTRACT NO. 2740,
 I. & G.N. R.R. Co. SURVEY, ABSTRACT NO. 2004, I. & G.N. R.R. Co. SURVEY, ABSTRACT NO. 1996

ACCT. NO.: 19003
 SCH. DIST.: AL
 CITY: CFW
 MAP NO.: M-15

OWNER
 Quail Valley Devco I, LLC
 8401 NORTH CENTRAL EXPRESSWAY
 SUITE 350, DALLAS, TEXAS 75225
 PHONE: (214) 292-3410
 FAX: (214) 292-3411

PREPARED BY:
HUITT-ZOLIARS
 Huitt-Zoliars, Inc. Dallas
 1717 McKinney Avenue, Suite 1400, Dallas, TX 75202
 Phone (214) 871-3311 Fax (214) 871-0757

D 756