

WALSH RANCH QUAIL VALLEY Lot 1, Block G, Lots 1 thru 4, Block F, Lots 1 thru 6, 7-POS*, Block M, Lot 1-POS*, Block N, Lots 1 thru 15, Block P, Lots 1 thru 5, 6-POS*, Block Q, Lots 1 thru 3, Block R, Lots 1 thru 6, Block AB
 DOC # 201629258, O.P.R.P.C.T.
 CABINET D, SLIDE 653, P.R.P.C.T.

1-POS*
 $\Delta=5^{\circ}57'30"$
 $R=867.00'$
 $CB=N 76^{\circ}10'05" E$
 $CH=90.12'$
 $L=90.16'$

WALSH RANCH QUAIL VALLEY, LOT 1, BLOCK A
 DOC # 201703233, O.P.R.P.C.T.
 CABINET D, SLIDE 677, P.R.P.C.T.

QUAIL VALLEY DEVCO I, LLC
 TRACT 2
 DOC # 201607571
 O.P.R.P.C.T.

I. & G.N. R.R. CO. SURVEY
 ABSTRACT NO. 1996

WALSH AVENUE
 DOC # 201629252, O.P.R.P.C.T.
 CABINET D, SLIDE 654, P.R.P.C.T.

HEIRS OF C.H. HIGBEE SURVEY
 ABSTRACT NO. 2740

WALSH RANCHES LIMITED PARTNERSHIP
 VOLUME 1699, PAGE 1765
 D.R.P.C.T.

WALSH RANCHES LIMITED PARTNERSHIP
 VOLUME 1699, PAGE 1765
 D.R.P.C.T.

QUAIL VALLEY DEVCO I, LLC
 TRACT 2
 DOC # 201607571
 O.P.R.P.C.T.

WALSH RANCHES LIMITED PARTNERSHIP
 VOLUME 1699, PAGE 1765
 D.R.P.C.T.

WALSH RANCHES LIMITED PARTNERSHIP
 VOLUME 1699, PAGE 1765
 D.R.P.C.T.

QUAIL VALLEY DEVCO I, LLC
 TRACT 2
 DOC # 201607571
 O.P.R.P.C.T.

WALSH RANCHES LIMITED PARTNERSHIP
 VOLUME 1699, PAGE 1765
 D.R.P.C.T.

WALSH RANCHES LIMITED PARTNERSHIP
 VOLUME 1699, PAGE 1765
 D.R.P.C.T.

QUAIL VALLEY DEVCO I, LLC
 TRACT 2
 DOC # 201607571
 O.P.R.P.C.T.

WALSH RANCHES LIMITED PARTNERSHIP
 VOLUME 1699, PAGE 1765
 D.R.P.C.T.

WALSH RANCHES LIMITED PARTNERSHIP
 VOLUME 1699, PAGE 1765
 D.R.P.C.T.

QUAIL VALLEY DEVCO I, LLC
 TRACT 2
 DOC # 201607571
 O.P.R.P.C.T.

WALSH RANCHES LIMITED PARTNERSHIP
 VOLUME 1699, PAGE 1765
 D.R.P.C.T.

WALSH RANCHES LIMITED PARTNERSHIP
 VOLUME 1699, PAGE 1765
 D.R.P.C.T.

QUAIL VALLEY DEVCO I, LLC
 TRACT 2
 DOC # 201607571
 O.P.R.P.C.T.

WALSH RANCHES LIMITED PARTNERSHIP
 VOLUME 1699, PAGE 1765
 D.R.P.C.T.

WALSH RANCHES LIMITED PARTNERSHIP
 VOLUME 1699, PAGE 1765
 D.R.P.C.T.

QUAIL VALLEY DEVCO I, LLC
 TRACT 2
 DOC # 201607571
 O.P.R.P.C.T.

WALSH RANCHES LIMITED PARTNERSHIP
 VOLUME 1699, PAGE 1765
 D.R.P.C.T.

WALSH RANCHES LIMITED PARTNERSHIP
 VOLUME 1699, PAGE 1765
 D.R.P.C.T.

QUAIL VALLEY DEVCO I, LLC
 TRACT 2
 DOC # 201607571
 O.P.R.P.C.T.

WALSH RANCHES LIMITED PARTNERSHIP
 VOLUME 1699, PAGE 1765
 D.R.P.C.T.

WALSH RANCHES LIMITED PARTNERSHIP
 VOLUME 1699, PAGE 1765
 D.R.P.C.T.

QUAIL VALLEY DEVCO I, LLC
 TRACT 2
 DOC # 201607571
 O.P.R.P.C.T.

WALSH RANCHES LIMITED PARTNERSHIP
 VOLUME 1699, PAGE 1765
 D.R.P.C.T.

WALSH RANCHES LIMITED PARTNERSHIP
 VOLUME 1699, PAGE 1765
 D.R.P.C.T.

QUAIL VALLEY DEVCO I, LLC
 TRACT 2
 DOC # 201607571
 O.P.R.P.C.T.

WALSH RANCHES LIMITED PARTNERSHIP
 VOLUME 1699, PAGE 1765
 D.R.P.C.T.

WALSH RANCHES LIMITED PARTNERSHIP
 VOLUME 1699, PAGE 1765
 D.R.P.C.T.

QUAIL VALLEY DEVCO I, LLC
 TRACT 2
 DOC # 201607571
 O.P.R.P.C.T.

WALSH RANCHES LIMITED PARTNERSHIP
 VOLUME 1699, PAGE 1765
 D.R.P.C.T.

WALSH RANCHES LIMITED PARTNERSHIP
 VOLUME 1699, PAGE 1765
 D.R.P.C.T.

QUAIL VALLEY DEVCO I, LLC
 TRACT 2
 DOC # 201607571
 O.P.R.P.C.T.

WALSH RANCHES LIMITED PARTNERSHIP
 VOLUME 1699, PAGE 1765
 D.R.P.C.T.

WALSH RANCHES LIMITED PARTNERSHIP
 VOLUME 1699, PAGE 1765
 D.R.P.C.T.

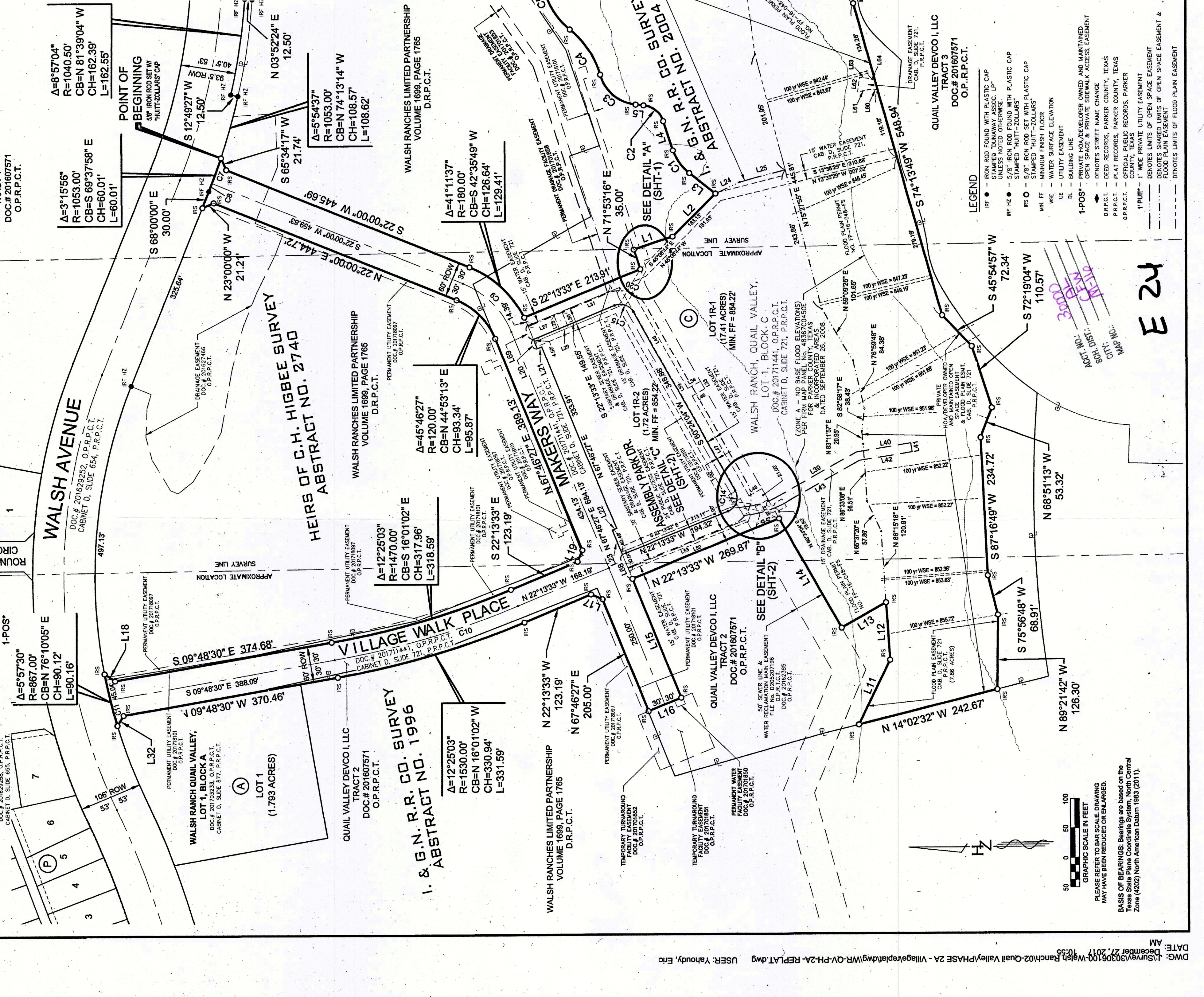
QUAIL VALLEY DEVCO I, LLC
 TRACT 2
 DOC # 201607571
 O.P.R.P.C.T.

WALSH RANCHES LIMITED PARTNERSHIP
 VOLUME 1699, PAGE 1765
 D.R.P.C.T.

WALSH RANCHES LIMITED PARTNERSHIP
 VOLUME 1699, PAGE 1765
 D.R.P.C.T.

QUAIL VALLEY DEVCO I, LLC
 TRACT 2
 DOC # 201607571
 O.P.R.P.C.T.

WALSH RANCHES LIMITED PARTNERSHIP
 VOLUME 1699, PAGE 1765
 D.R.P.C.T.



- LEGEND**
- IRF ● - IRON ROD FOUND WITH PLASTIC CAP
 - IRF ○ - IRON ROD FOUND WITH PLASTIC CAP UNLESS NOTED OTHERWISE
 - IRF ● - 5/8" IRON ROD FOUND WITH PLASTIC CAP
 - IRF ○ - 5/8" IRON ROD SET WITH PLASTIC CAP
 - MIN. FF - MINIMUM FINISH FLOOR
 - WSE - WATER SURFACE ELEVATION
 - UE - UTILITY EASEMENT
 - BL - BUILDING LINE
 - 1-POS* - DENOTES STREET NAME CHANGE
 - DR.P.C.T. - DEED RECORDS, PARKER COUNTY, TEXAS
 - P.R.P.C.T. - PLAT RECORDS, PARKER COUNTY, TEXAS
 - O.P.R.P.C.T. - OFFICIAL PUBLIC RECORDS, PARKER COUNTY, TEXAS
 - 1" PUE" - 1" WIDE PRIVATE UTILITY EASEMENT
 - DENOTES LIMITS OF OPEN SPACE EASEMENT
 - DENOTES SHARPED LIMITS OF OPEN SPACE EASEMENT & FLOOD PLAIN EASEMENT
 - DENOTES LIMITS OF FLOOD PLAIN EASEMENT

WALSH RANCHES LIMITED PARTNERSHIP
 VOLUME 1699, PAGE 1765
 D.R.P.C.T.

QUAIL VALLEY DEVCO I, LLC
 TRACT 3
 DOC # 201607571
 O.P.R.P.C.T.

LOT 1, BLOCK C
 WALSH RANCH, QUAIL VALLEY,
 LOT 1, BLOCK C
 DOC # 201711441, O.P.R.P.C.T.
 CABINET D, SLIDE 721, P.R.P.C.T.
 (ZONE A - NO BASE FLOOD ELEVATIONS)
 PER FIRM MAP PANEL NO. 48367C0450E
 FOR PARKER COUNTY, TEXAS
 DATED SEPTEMBER 26, 2008

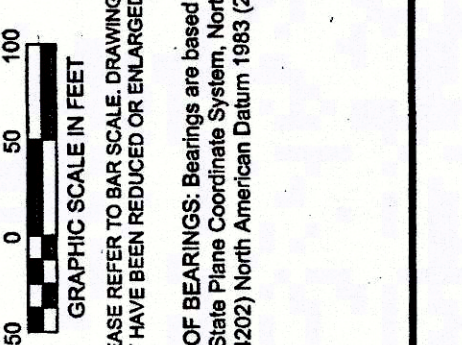
LOT 1R-1 (17.41 ACRES)
 MIN. FF = 854.22'

LOT 1R-2 (1.72 ACRES)
 MIN. FF = 854.22'

SEE DETAIL "A" (SHT-1)
 SEE DETAIL "B" (SHT-2)

ACT. NO. 10000
 20000
 30000
 40000

MAP NO. 2
 CITY: METEM
 SO. DIST. 11



BASIS OF BEARINGS: Bearings are based on the Texas State Plane Coordinate System, North Central Zone (4202) North American Datum 1983 (2011).