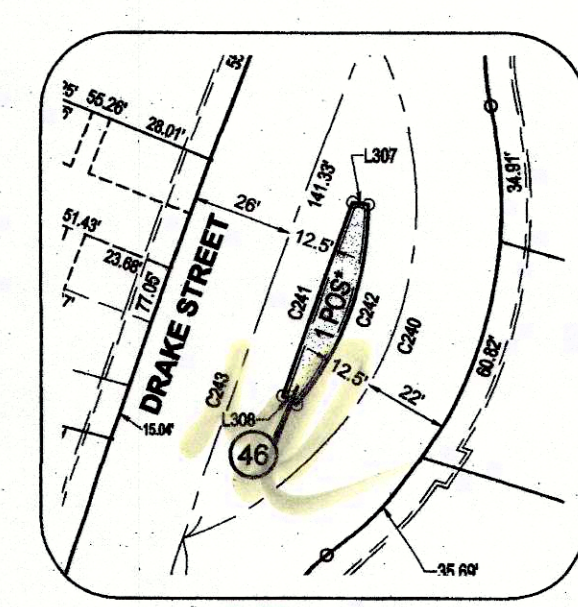
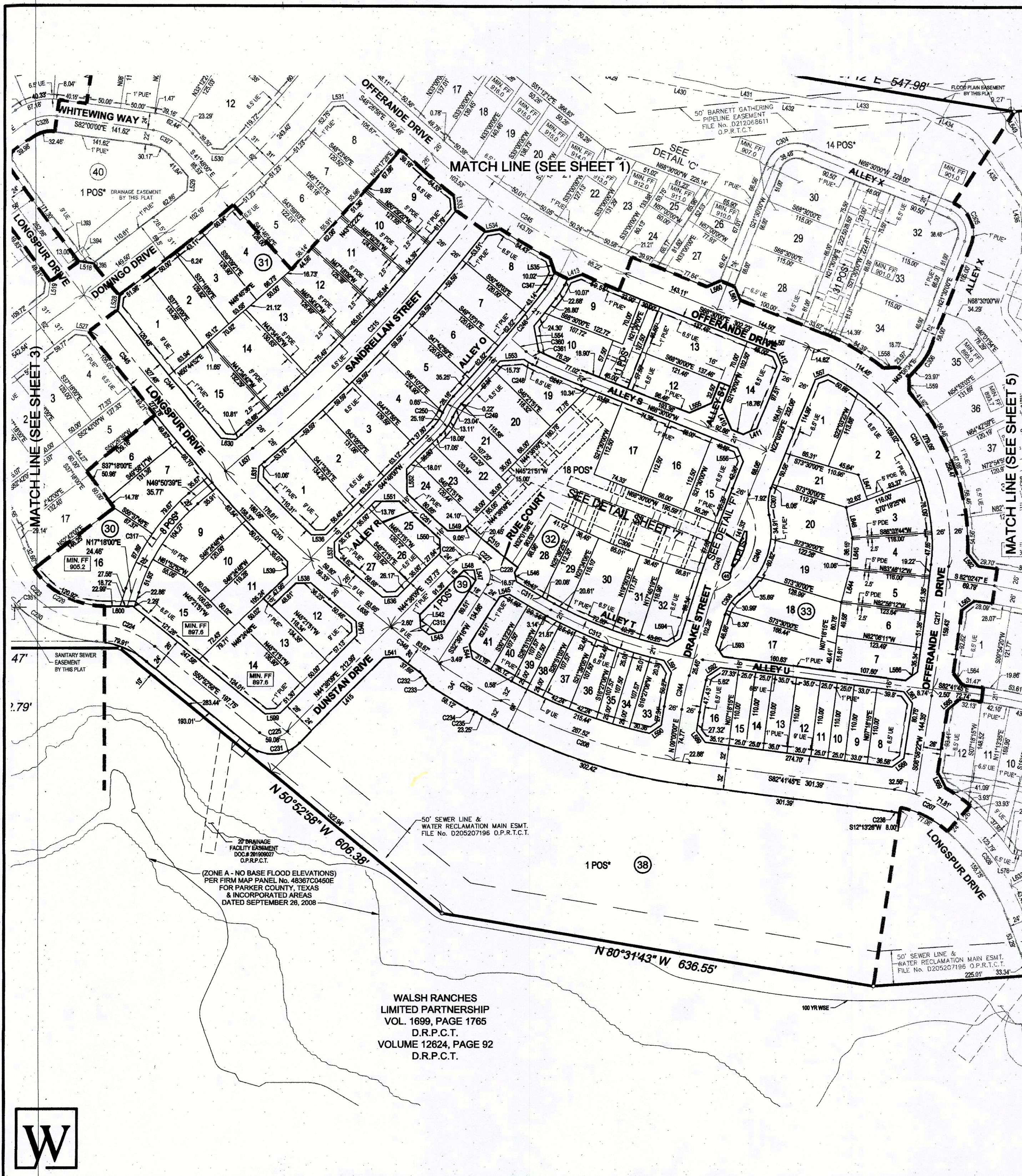
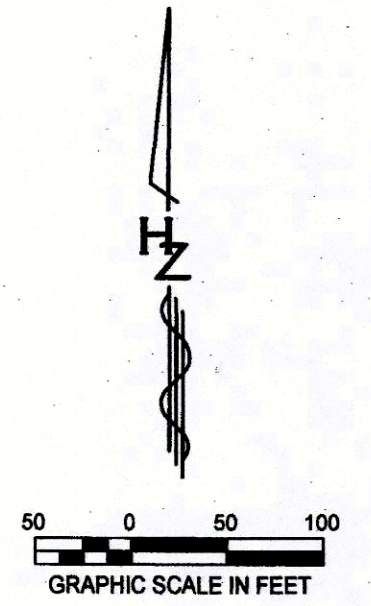


DWG: \\HZDALLAS\1\sk3\Survey\30306100-Walsh_Ranch\02-Quail_Valley\Phase 3 - Planning Area\1\plans\dwg\FINAL_PLAT_PA-28_TRACT2.dwg
 USER: booke
 DATE: Feb 18, 2020 12:15pm XREFS: PA 2-A_BASE EXISTING BASE 20181217_306124_Prop_Base Lot Layout_306124_Prop_Base Lot Layout



DETAIL 'F'
SCALE: 1" = 50'



FINAL PLAT WALSH RANCH - QUAIL VALLEY

- | | | |
|--------------------------|--------------------------|-----------------|
| Lots 1 thru 44, Block 21 | Lots 1 thru 18, Block 30 | Lot 1, Block 39 |
| Lots 1 thru 55, Block 22 | Lots 1 thru 15, Block 31 | Lot 1, Block 40 |
| Lots 1 thru 24, Block 23 | Lots 1 thru 41, Block 32 | Lot 1, Block 41 |
| Lots 1 thru 12, Block 24 | Lots 1 thru 21, Block 33 | Lot 1, Block 42 |
| Lots 1 thru 30, Block 25 | Lots 1 thru 12, Block 34 | Lot 1, Block 43 |
| Lots 1 thru 22, Block 26 | Lots 1 thru 6, Block 35 | Lot 1, Block 44 |
| Lots 1 thru 21, Block 27 | Lots 1 thru 9, Block 36 | Lot 1, Block 45 |
| Lots 1 thru 12, Block 28 | Lot 1, Block 37 | Lot 1, Block 46 |
| Lots 1 thru 6, Block 29 | Lot 1, Block 38 | |

109.5 ACRES

AN ADDITION TO THE CITY OF FORT WORTH,
PARKER COUNTY, TEXAS

SITUATED IN THE
I. & G.N. R.R. CO. SURVEY ABSTRACT No. 1996



L. J. McNeil
02-25-2020

WALSH RANCHES
LIMITED PARTNERSHIP
VOL. 1699, PAGE 1765
D.R.P.C.T.
VOLUME 12624, PAGE 92
D.R.P.C.T.

ACGT. NO.: 30005
 SCH. DIST.: PL
 CITY: CFW
 MAP NO.: M14
 21996.001 000.80
 E-488

COUNTY RECORDING INFORMATION

OWNERS
QUAIL VALLEY DEVCO II, LLC
8401 NORTH CENTRAL EXPRESSWAY
SUITE 350, DALLAS, TEXAS 75225
PHONE: (214) 292-3410
FAX: (214) 292-3411

PREPARED BY:
HUITT-ZOLLARS
Huitt-Zollars, Inc. Dallas
1717 McKinney Avenue, Suite 1400, Dallas, TX 75202
Phone (214) 871-3311 Fax (214) 871-0757

JANUARY 2020 SHEET 4 OF 10