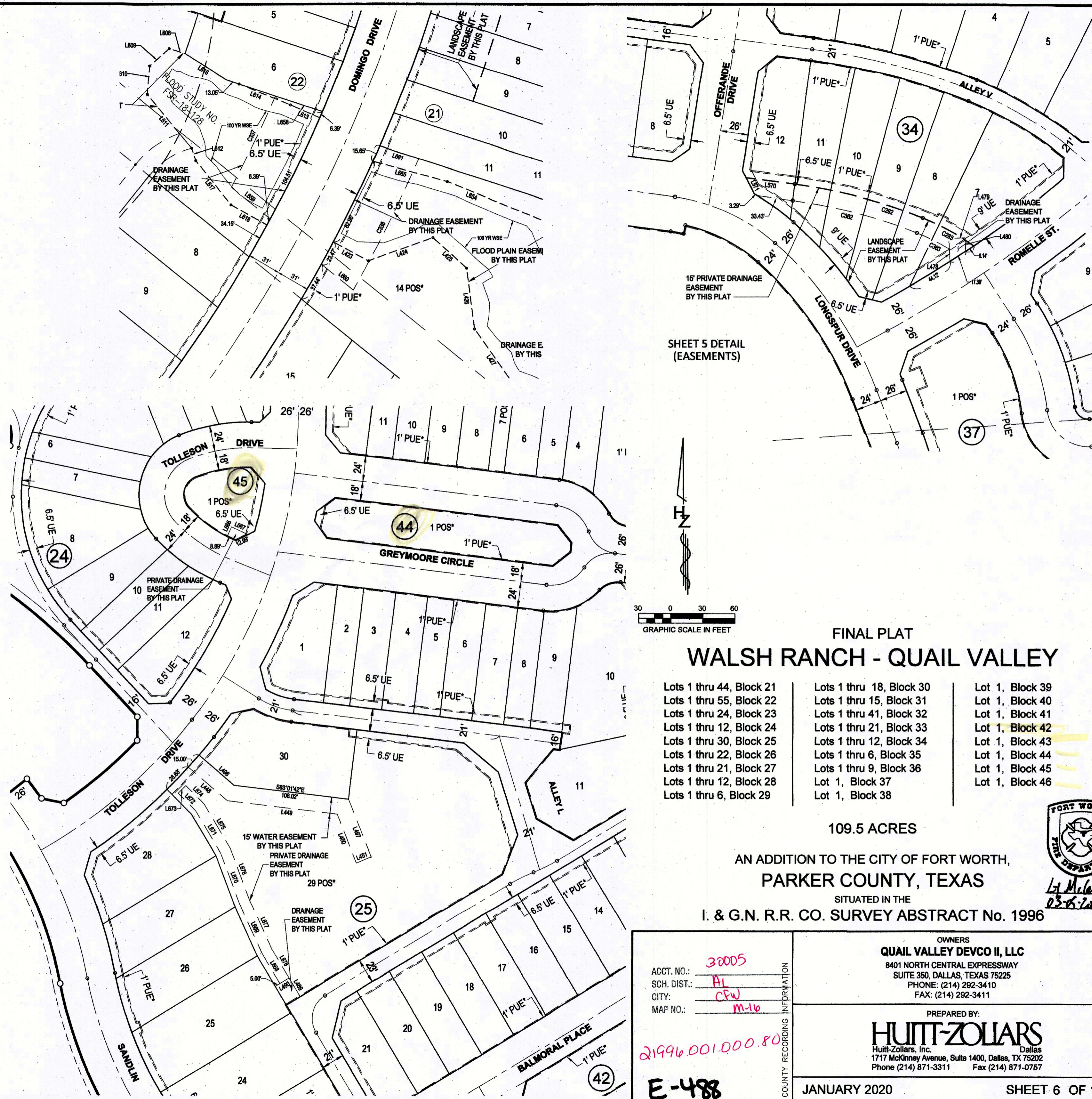


DWG: \\HZDALLAS1\disk3\Survey\306100-Walsh Ranch\02-Quail Valley\PHASE 3 -Planning Area\plans\dwg\FINAL PLAT_PA-2B TRACT2.dwg USER: boole
 DATE: Feb 18, 2020 12:15pm XREFS: PA 2.A_BASE EXISTING_BASE 20181217_306124_Prop_Base_Lot_Layout_306124_Prop_Base_Lot_Layout



FINAL PLAT
WALSH RANCH - QUAIL VALLEY

- | | | |
|--------------------------|--------------------------|-----------------|
| Lots 1 thru 44, Block 21 | Lots 1 thru 18, Block 30 | Lot 1, Block 39 |
| Lots 1 thru 55, Block 22 | Lots 1 thru 15, Block 31 | Lot 1, Block 40 |
| Lots 1 thru 24, Block 23 | Lots 1 thru 41, Block 32 | Lot 1, Block 41 |
| Lots 1 thru 12, Block 24 | Lots 1 thru 21, Block 33 | Lot 1, Block 42 |
| Lots 1 thru 30, Block 25 | Lots 1 thru 12, Block 34 | Lot 1, Block 43 |
| Lots 1 thru 22, Block 26 | Lots 1 thru 6, Block 35 | Lot 1, Block 44 |
| Lots 1 thru 21, Block 27 | Lots 1 thru 9, Block 36 | Lot 1, Block 45 |
| Lots 1 thru 12, Block 28 | Lot 1, Block 37 | Lot 1, Block 46 |
| Lots 1 thru 6, Block 29 | Lot 1, Block 38 | |

109.5 ACRES

AN ADDITION TO THE CITY OF FORT WORTH,
 PARKER COUNTY, TEXAS

SITUATED IN THE
 I. & G.N. R.R. CO. SURVEY ABSTRACT No. 1996



Lt. M. J. ...
 03-18-2020

ACCT. NO.: 30005
 SCH. DIST.: AL
 CITY: CFW
 MAP NO.: M-16
 21996.001.000.80
 E-488

COUNTY RECORDING INFORMATION
 OWNERS
QUAIL VALLEY DEVCO II, LLC
 8401 NORTH CENTRAL EXPRESSWAY
 SUITE 350, DALLAS, TEXAS 75225
 PHONE: (214) 292-3410
 FAX: (214) 292-3411
 PREPARED BY:
HUITT-ZOLIARS
 Huitt-Zollars, Inc. Dallas
 1717 McKinney Avenue, Suite 1400, Dallas, TX 75202
 Phone (214) 871-3311 Fax (214) 871-0757
 JANUARY 2020 SHEET 6 OF 10