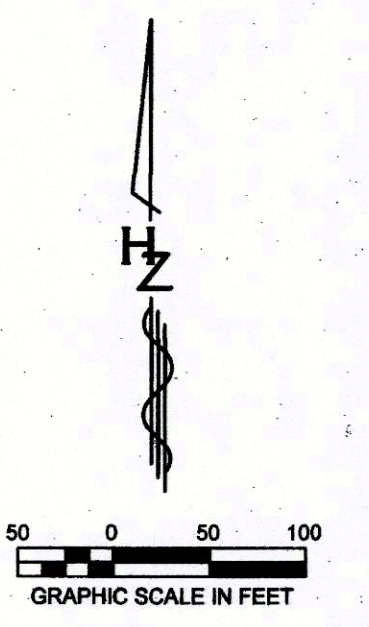
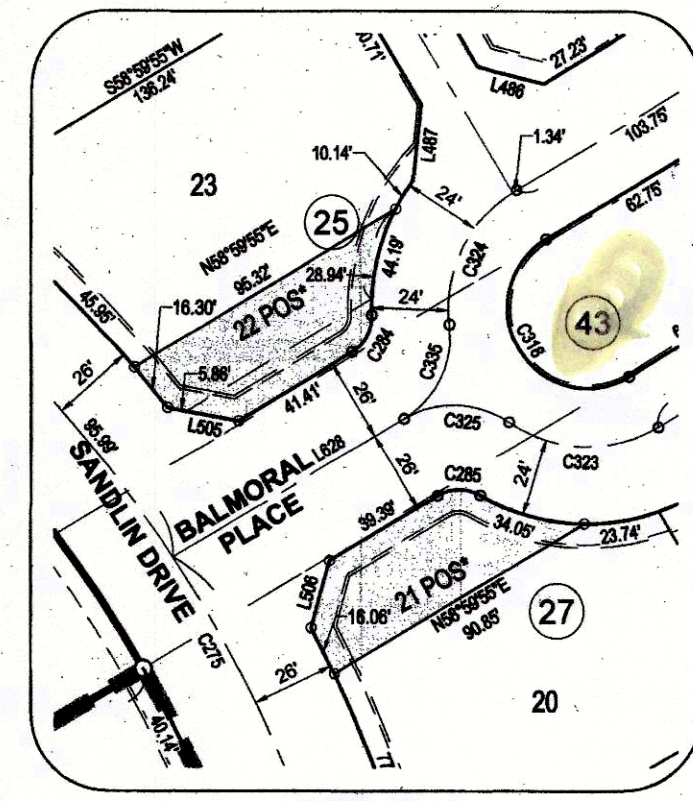
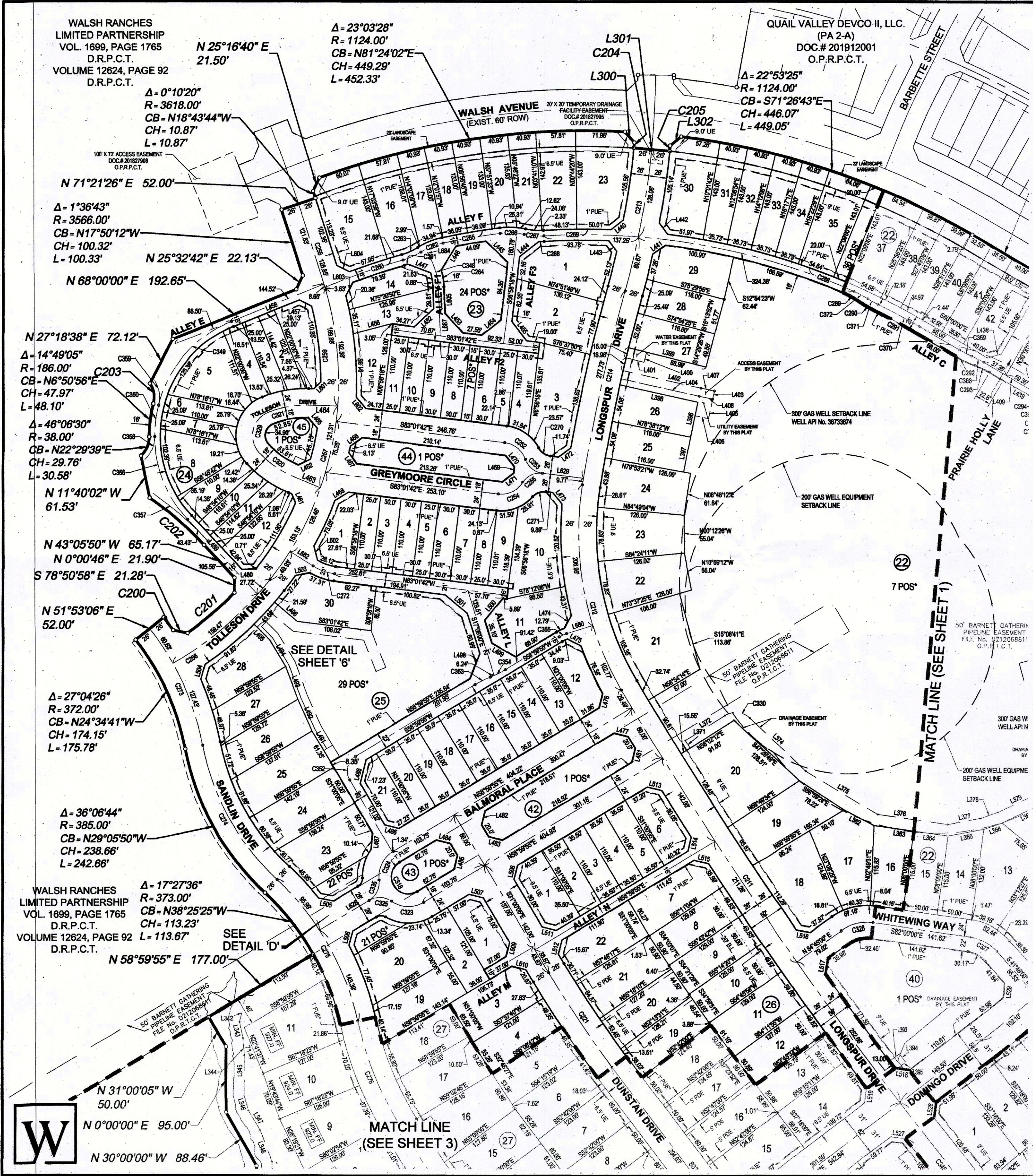


DWG: \\H2DALLAS\disk3\Survey\30306100-Walsh Ranch\02-Quail Valley\Phase 3 - Planning Area\MapInfo\FINAL PLAT_PA-2B TRACT2.dwg USER: boole
 DATE: Feb 18, 2020 12:14pm XREFS: PA 2-A, BASE EXISTING_BASE 20181217_306124_Prop_Base_LotLayout



DETAIL 'D'
SCALE: 1" = 60'



Lt. McClain
02-19-2020

**FINAL PLAT
WALSH RANCH - QUAIL VALLEY**

- | | | |
|--|--|--|
| Lots 1 thru 44, Block 21
Lots 1 thru 55, Block 22
Lots 1 thru 24, Block 23
Lots 1 thru 12, Block 24
Lots 1 thru 30, Block 25
Lots 1 thru 22, Block 26
Lots 1 thru 12, Block 27
Lots 1 thru 6, Block 28
Lots 1 thru 6, Block 29 | Lots 1 thru 18, Block 30
Lots 1 thru 15, Block 31
Lots 1 thru 41, Block 32
Lots 1 thru 21, Block 33
Lots 1 thru 12, Block 34
Lots 1 thru 6, Block 35
Lots 1 thru 9, Block 36
Lot 1, Block 37
Lot 1, Block 38 | Lot 1, Block 39
Lot 1, Block 40
Lot 1, Block 41
Lot 1, Block 42
Lot 1, Block 43
Lot 1, Block 44
Lot 1, Block 45
Lot 1, Block 46 |
|--|--|--|

109.5 ACRES

AN ADDITION TO THE CITY OF FORT WORTH,
 PARKER COUNTY, TEXAS
 SITUATED IN THE
 I. & G.N. R.R. CO. SURVEY ABSTRACT No. 1996

ACCT. NO.: 30005
 SCH. DIST.: AL
 CITY: CPW
 MAP NO.: A-111
 21996.00.000.00
 E-488

COUNTY RECORDING INFORMATION

OWNERS
QUAIL VALLEY DEVCO II, LLC
 8401 NORTH CENTRAL EXPRESSWAY
 SUITE 350, DALLAS, TEXAS 75225
 PHONE: (214) 292-3410
 FAX: (214) 292-3411

PREPARED BY:
HUITT-ZOLIARS
 Dallas
 1717 McKinney Avenue, Suite 1400, Dallas, TX 75202
 Phone (214) 871-3311 Fax (214) 871-0757

JANUARY 2020 SHEET 2 OF 10