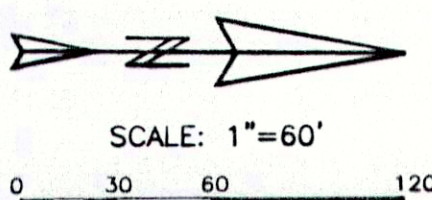
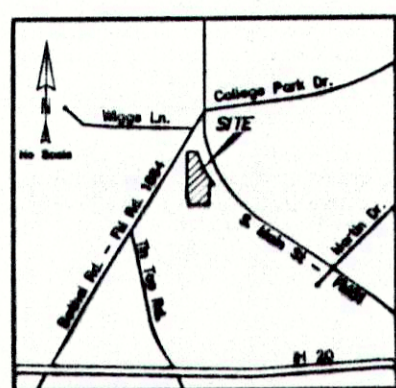


D329



LEGEND

- Found Iron Rod Monument
Right of Way
5/8" Set Iron Rod w/ plastic cap stamped "KADLECK 3082"
Dead Records Parker County, Texas
Plat Records Parker County, Texas
Overhead Electric Easement
Underground Electric Easement
Cells per Acre

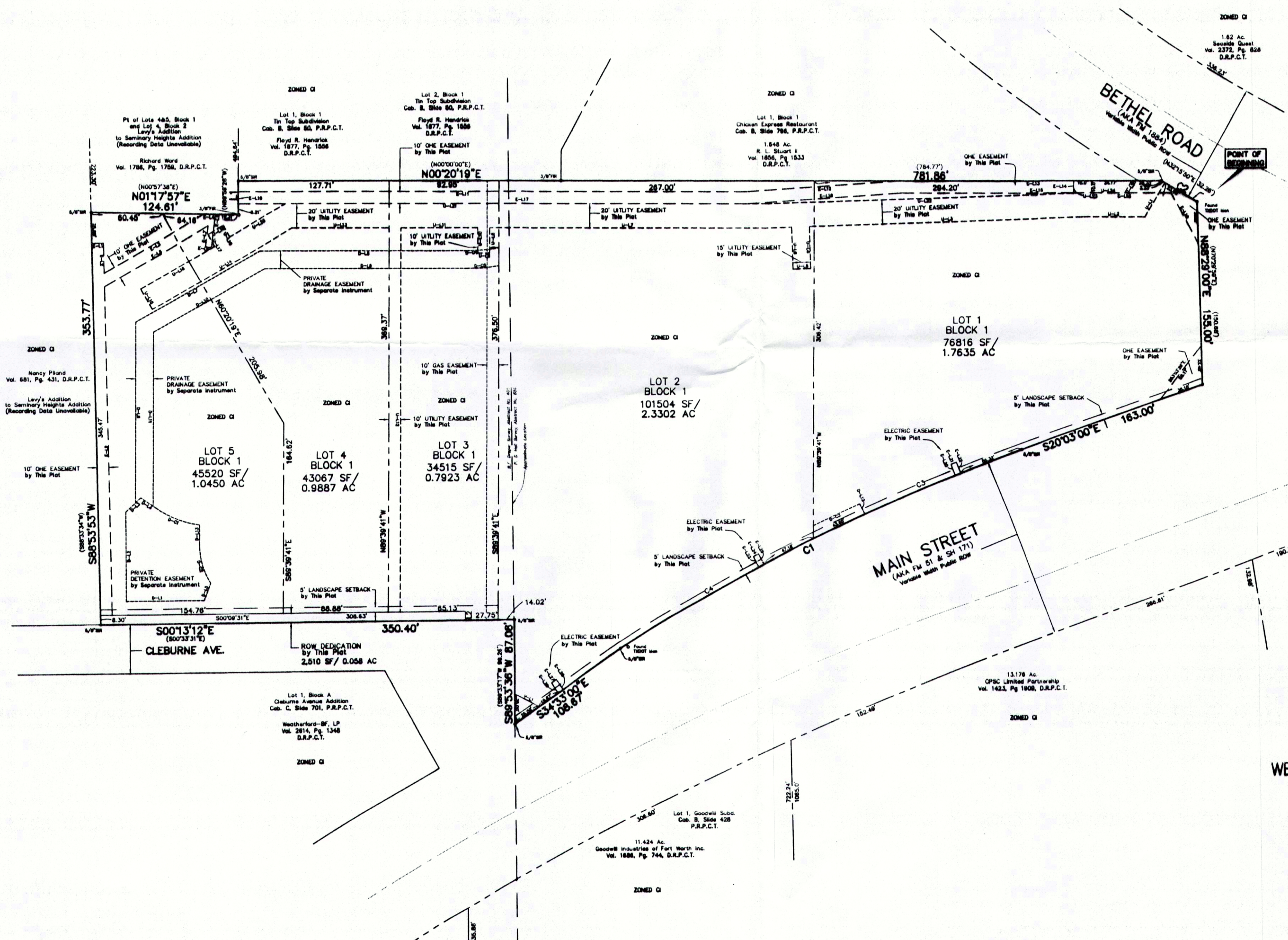


PROLINE DATA

Table with columns: NUM, BEARING, DISTANCE, NUM, BEARING, DISTANCE, NUM, BEARING, DISTANCE. Contains proline data for various lines on the plat.

Tables for ELECTRIC EASEMENT (E-L), UTILITY EASEMENT (U-L), and VISIBILITY EASEMENT (V-L) with columns for NUM, BEARING, and DISTANCE.

Tables for DRAINAGE EASEMENT (D-L) with columns for NUM, BEARING, DISTANCE, NUM, BEARING, DISTANCE, NUM, BEARING, DISTANCE, NUM, BEARING, DISTANCE.



ACCT. NO.: 19041
SCH. DIST.: WE
CITY: CWE
MAP NO.: H-16

SEE SHEET 2 OF 2 FOR LEGAL

SHEET 1 OF 2
FINAL PLAT
WEATHERFORD HILLTOP ADDITION
LOTS 1-5, BLOCK 1
A 6.977 ACRE TRACT
P. S. HALL SURVEY, ABSTRACT NO. 659
B.F. DRAPER SURVEY, ABSTRACT NO. 405
WEATHERFORD, PARKER COUNTY, TEXAS
OWNER: Emmanuel Baptist Church
DEVELOPER: Weatherford Hilltop, LLC
1708 S. Main Street, Hurst, TX 76054
817-268-3566, 817-268-2240

KADLECK & ASSOCIATES
ENGINEERING PLANNING SURVEYING
2000 N. CENTRAL EXPY. SUITE 113
(817) 861-0771 PLANO, TX 75074
PREPARED JAN 31 2013 BY:
FILED Cabinet Slide P.D.C.T. JOB #1280