

36086

RECEIVED AND FILED FOR RECORD At 3:05 O'Clock P.M. JAN 23 1975

T. H. "Tommy" McDaniel, Co. Clerk PARKER COUNTY, TEXAS By J.H. Deputy

STATE OF TEXAS COUNTY OF PARKER I hereby certify that this instrument was filed on the date and time stamped hereon by me and was duly recorded on the 23 day of Jan A.D., 1975, in Vol. 36086 page 48 of the Plat records of Parker, Texas



T. H. "Tommy" McDaniel

County Clerk, Parker County, Texas

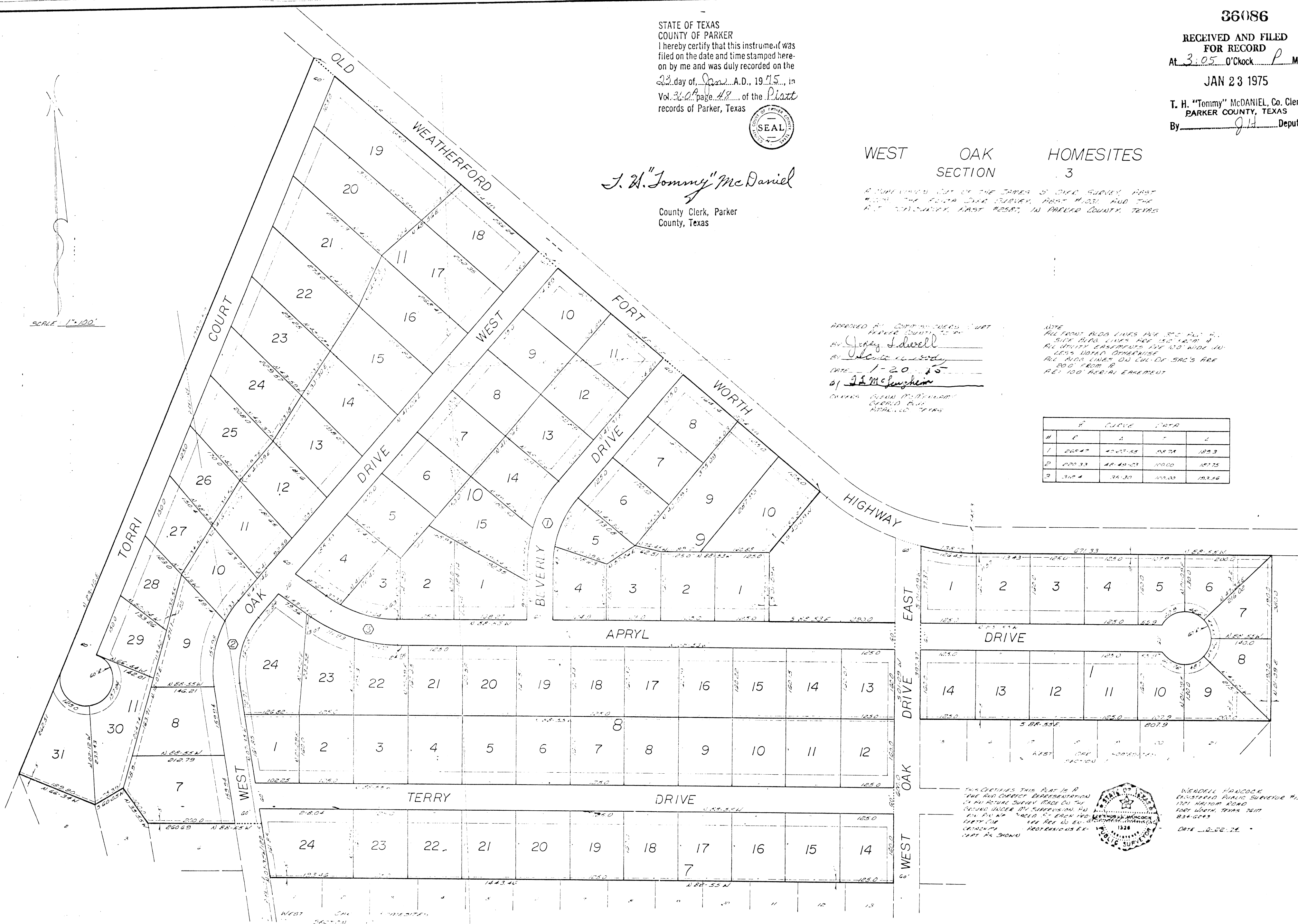
WEST OAK SECTION 3 HOMESITES

A PART OF THE CITY OF THE TOWN OF WEST OAK SURVEY, PART OF THE FIRST ADD SURVEY, PART #1031 AND THE R.T. #1031 SURVEY, PART #2587, IN PARKER COUNTY, TEXAS

APPROVED BY COMMON DEERS COURT PARKER COUNTY, TEXAS BY George L. Swell DATE 1-20-75 BY J.H. McDaniel

NOTE: ALL FRONT ALIEN LINES ARE 30.0 FEET WIDE. SIDE ALIEN LINES ARE 15.0 FEET WIDE. ALL UTILITY EASEMENTS ARE 10.0 FEET WIDE UNLESS NOTED OTHERWISE. ALL ALIEN LINES ON CUL-DE-SACS ARE 20.0 FEET FROM R. R.E. 100 PERCENT EASEMENT

Table with 4 columns: #, R, AREA, PERCENT. Rows 1, 2, 3.



SCALE 1"=100'

THE CERTAIN THIS PLAT IS A TRUE AND CORRECT REPRESENTATION OF THE ACTUAL SURVEY MADE ON THE GROUND UNDER MY SUPERVISION AND IN FULL COMPLIANCE WITH THE PROVISIONS OF THE ACT AS SHOWN



WENDELL HANCOCK REGISTERED PLAT SURVEYOR #1328 1201 WATSON ROAD FORT WORTH, TEXAS 76117 B346245 DATE 1-22-75