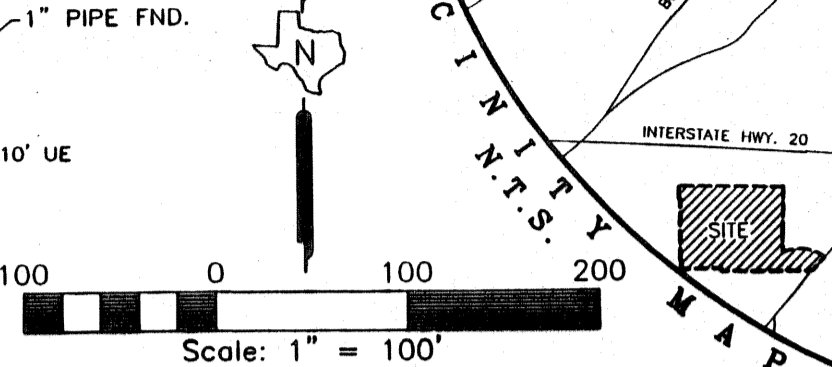
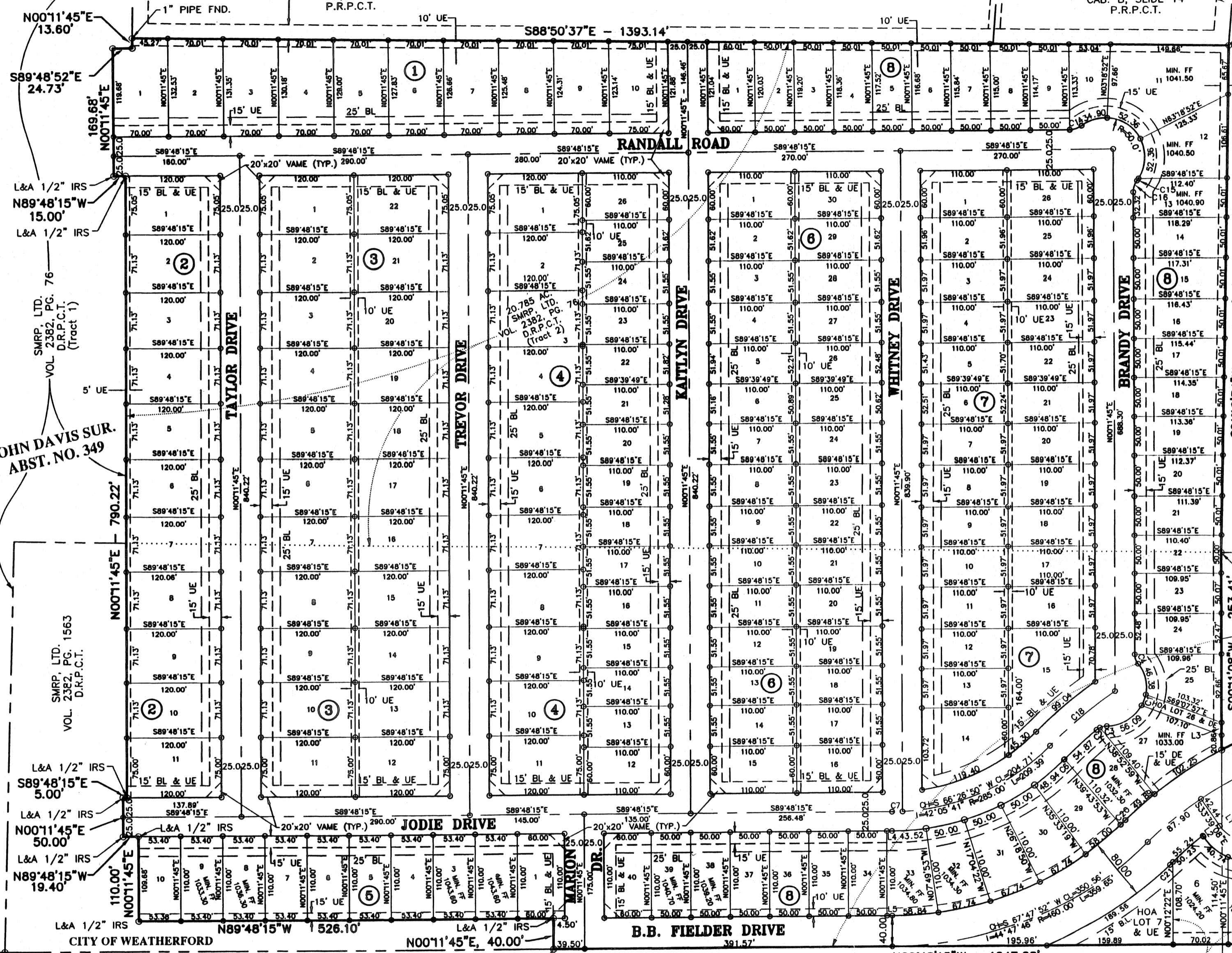


\\Ca7\data\200505162 - Creekside - Parker Co\PLAT19-18-0602-PLAT.dwg - 3/28/2007 - 10:24 AM

C-565

LOT 1-R, BLK. 1
WAYSIDE INDUSTRIAL ADDITION
CAB. B, SLIDE 14
P.R.P.C.T.
Doc# 637787
Book 2534 Page 25

LOT 2-R, BLK. 1
WAYSIDE INDUSTRIAL ADDITION
CAB. B, SLIDE 14
P.R.P.C.T.



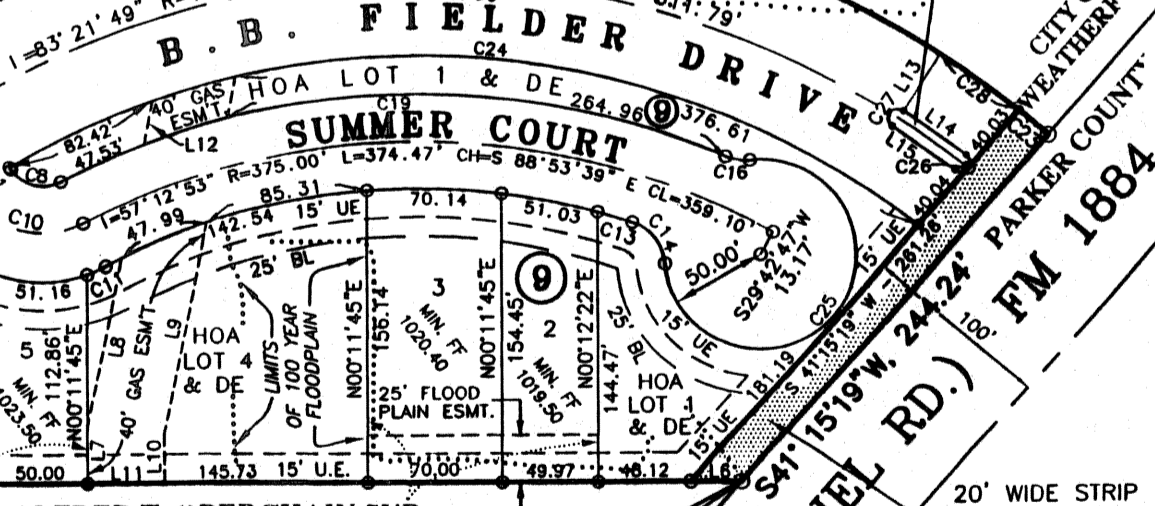
CURVE TABLE

NO.	DELTA	RADIUS	ARC	CHORD DIRECTION	CHORD
C1	11°28'25"	50.00	15.01	S 20°52'10" W	15.00
C2	14°17'05"	20.00	4.99	N 57°47'43" E	4.97
C3	25°56'39"	20.00	9.06	N 77°54'35" E	8.98
C4	38°12'57"	20.00	13.34	N 18°54'29" W	13.09
C6	00°05'58"	610.00	1.06	N 45°26'58" E	1.06
C7	02°42'05"	285.00	13.44	S 88°50'43" W	13.44
C8	83°50'58"	20.00	29.27	N 75°34'36" W	26.73
C9	16°10'50"	70.00	19.77	S 41°44'32" E	19.70
C10	83°50'58"	45.00	65.86	S 75°34'36" E	60.13
C11	08°37'54"	70.00	10.55	S 66°48'52" W	10.54
C12	17°09'52"	70.00	20.97	N 58°24'54" W	20.89
C13	03°06'42"	350.00	19.01	S 72°46'32" E	19.01
C14	66°12'16"	25.00	28.89	S 38°07'03" E	27.31
C15	61°43'29"	25.00	26.93	S 35°52'40" E	25.65
C16	29°46'52"	25.00	12.99	N 81°05'12" W	12.85
C17	10°56'53"	460.00	87.90	S 50°52'26" W	87.76
C18	09°44'01"	635.00	107.88	S 50°16'00" W	107.75
C19	51°18'19"	400.00	358.18	N 88°09'04" E	346.33
C20	01°07'58"	420.00	8.30	S 45°57'58" W	8.30
C21	00°40'59"	420.00	5.01	N 45°44'29" E	5.01
C22	03°09'51"	420.00	23.19	N 51°21'12" E	23.19
C23	02°17'33"	500.00	20.01	S 49°53'27" E	20.00
C24	68°45'56"	420.00	504.08	S 85°51'25" E	474.36
C25	27°57'42"	50.00	236.46	N 39°30'14" E	70.11
C26	180°00'00"	5.00	15.71	S 35°41'24" W	10.00
C27	180°00'00"	5.00	15.71	N 35°41'24" E	10.00
C28	05°47'01"	500.00	50.47	N 53°55'44" W	50.45

JOHN DAVIS SUR.
ABST. NO. 349

JOHN HIBBINS SUR.
ABST. NO. 558

CH-S 82°57'19" E CL-562.23'
L=68°25'15" R=500.00' L=597.09'



THE STATE OF TEXAS
I HEREBY CERTIFY THAT THIS PLAT WAS PREPARED FROM AN ACTUAL SURVEY OF THE PROPERTY MADE UNDER MY SUPERVISION ON THE GROUND AND ACCURATELY REPRESENTS THE PROPERTY.

Theron W. Sims
THERON W. SIMS, R.P.L.S. No. 5887

3/28/07
DATE



LANDES & ASSOCIATES, INC.
REGISTERED PROFESSIONAL LAND SURVEYORS

PATRICIA N. KREIPE
VOL. 680, PG. 432
D.R.P.C.T. &
VIER KREIPE PARTNERS, L.P.
(1/2) UNDIVIDED INT.
VOL. 2274, PG. 1058
D.R.P.C.T.

OWNERS:
SMRP, Ltd., a Texas Limited Partnership
200 South Bank St.
Southlake, Texas 76092
Cheldan Homes, L.P. a Texas Limited Partnership
8861 Corporation Pkwy.
Ft. Worth, Texas 76126
Choice Homes, Inc. a Texas Corporation
1800 E. Lamar Blvd.
P.O. Box 1048
Arlington, Texas 78004

LINE TABLE

NO.	DIRECTION	DIST.	NO.	DIRECTION	DIST.
L1	N 33°39'08" E	1.67'	L5	N 89°48'15" W	6.57'
L2	N 33°39'08" W	1.67'	L6	N 89°48'15" W	26.52'
L3	S 00°11'08" W	15.69'	L7	N 00°06'59" W	30.08'
L4	S 89°48'15" E	6.48'	L8	N 11°24'37" E	92.92'
			L9	S 11°24'37" W	115.35'
			L10	S 00°04'41" E	26.06'
			L11	S 89°55'19" W	39.98'
			L12	N 11°24'37" E	23.39'
			L13	S 33°10'45" W	35.30'
			L14	S 54°18'36" E	39.99'
			L15	N 54°18'36" W	39.99'

CHOICE HOMES, INC.
BOOK 2479, PG. 1137
D.R.P.C.T.

ALFRED T. OBERCHAIN SUR.
ABST. NO. 1033

CHELDAN HOMES, L.P.
BOOK 2498, PG. 194 &
BOOK 2498, PG. 203
D.R.P.C.T.

ACCT. NO.: 19235
SCH. DIST.: WE
CITY: WE
MAP NO.: G-17

A FINAL PLAT OF
LOTS 1-10, BLK. 1, LOTS 1-11, BLK. 2, LOTS 1-22,
BLK. 3, LOTS 1-26, BLK. 4, LOTS 1-10, BLK. 5, LOTS
1-30, BLK. 6, LOTS 1-26, BLK. 7, LOTS 1-40, BLK. 8,
LOTS 1-7, BLK. 9 AND LOT 1, BLK. 10

WESTOVER VILLAGE ESTATES, PH. I

AN ADDITION TO THE CITY OF WEATHERFORD, PARKER COUNTY, TEXAS, SITUATED IN THE JOHN DAVIS SURVEY, ABSTRACT NO. 349, AND THE ALFRED T. OBERCHAIN SURVEY, ABSTRACT NO. 1033, PARKER COUNTY, TEXAS, AND CONTAINING 39.910 ACRES OF LAND.