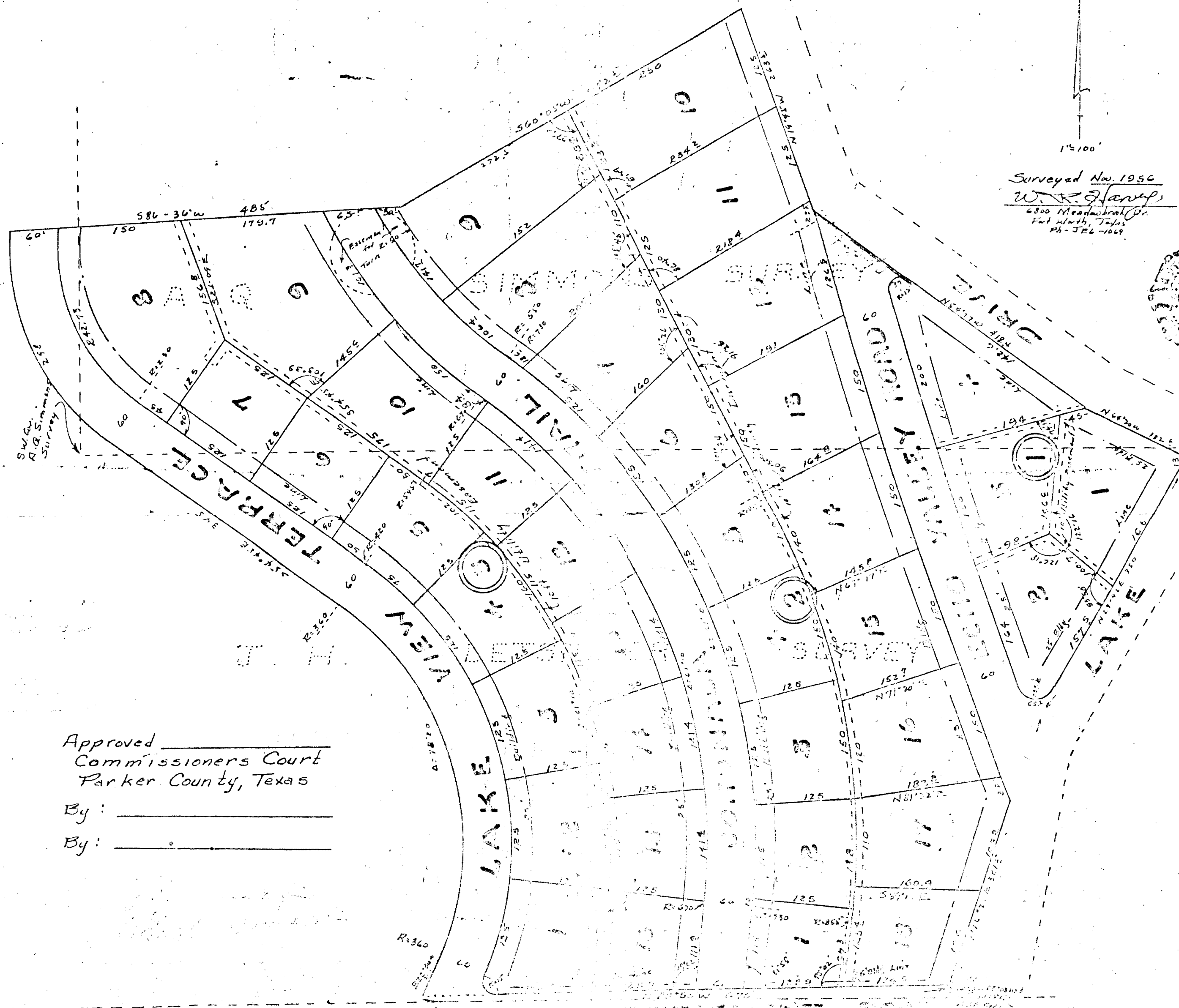


MAP OF BLOCKS 1, 2, 3  
**WESTVIEW**  
 AN ADDITION IN PARKER COUNTY  
 out of the J.H. Latsinger & A.Q. Simmons Surveys.



Surveyed Nov. 1956  
 W. R. Harvey  
 4800 Meadowbrook Dr.  
 Fort Worth, Texas  
 Ph-526-1109



Approved \_\_\_\_\_  
 Commissioners Court  
 Parker County, Texas

By: \_\_\_\_\_  
 By: \_\_\_\_\_

LAKE

LAKE