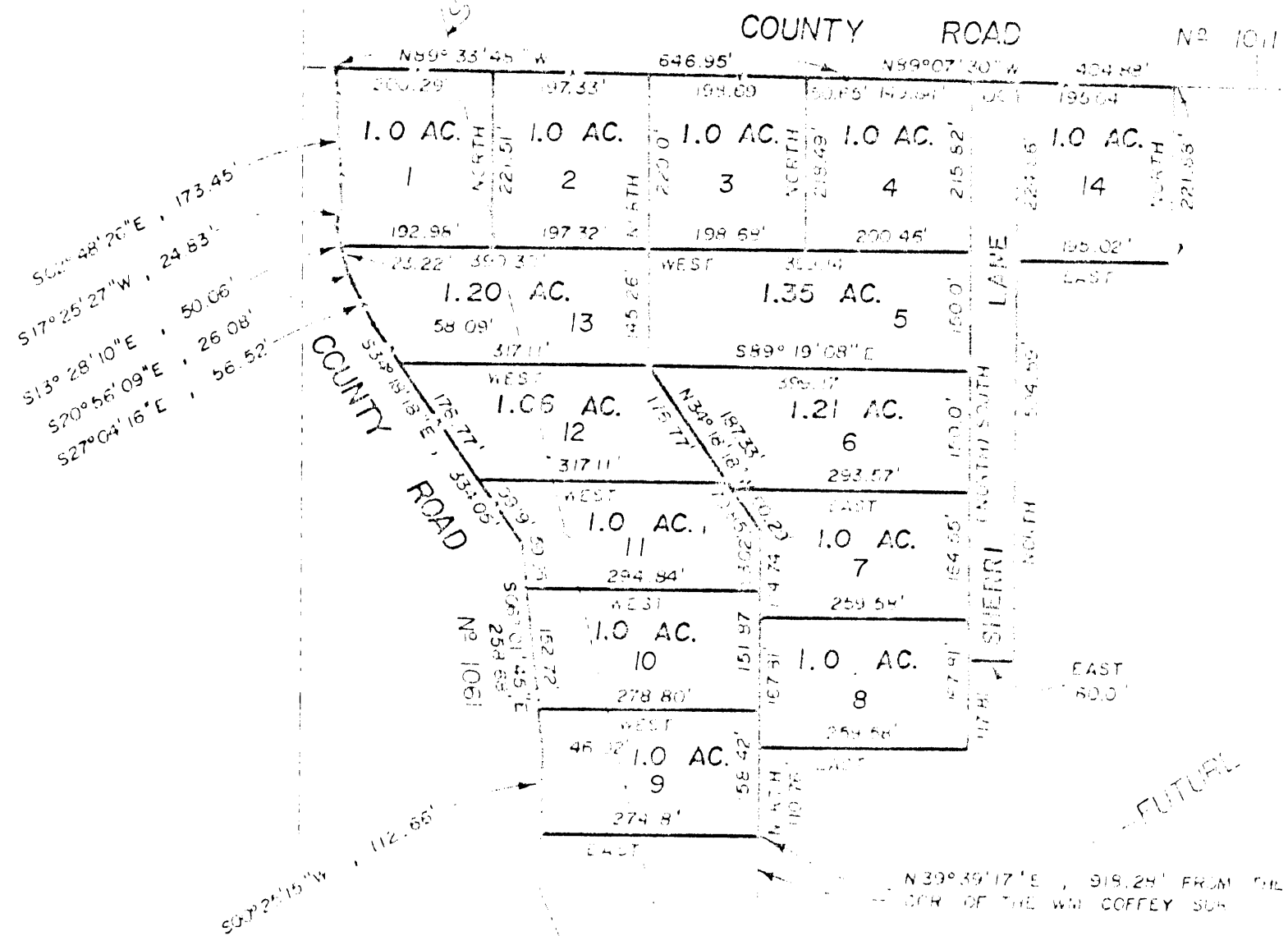


TYPICAL CROSS-SECTION

W. S. NEWSOM SUR.
AB. - 2339

R. CLIFTON SUR.
AB. - 282



WM. COFFEY SUR.
AB. - 265

WHISPERING OAKS
PHASE II
BEING A PART OF THE WM.
COFFEY SUR. AB. - 265
PARKER COUNTY, TEXAS

MEEK SUR. 104037

894

RECEIVED AND FILED
FOR RECORD
9:50 October 2
MAY 15 1985
CARRIE REED, Co. Clerk
PARKER COUNTY, TEXAS
Deputy
10 copies

Book 363A page 24
STATE OF TEXAS COUNTY OF PARKER
I hereby certify that this instrument was filed
on the date and time stamped hereon by me and
was duly recorded in the volume and page of the
named records of Parker County as stamped here-
on by me.

RECORDED MAY 15 1985
SEAL
Carrie Reed
County Clerk, Parker County, Tex.

SCALE
LEGEND
O IRON PIPE
S STEEL ROD
X FENCE CORNER
FENCE

HUGHES AND ASSOCIATES
LAND SURVEYING
CIVIL ENGINEERING
LAND PLANNING
111 E. COLUMBIA, SUITE E WEATHERFORD, TEXAS
OFFICE 942-272 OR 241-7619 HOME 394-2169

I hereby certify that this map
was prepared from field notes of a survey made by me or
under my supervision and to the best of my knowledge and belief
it is true and correct.