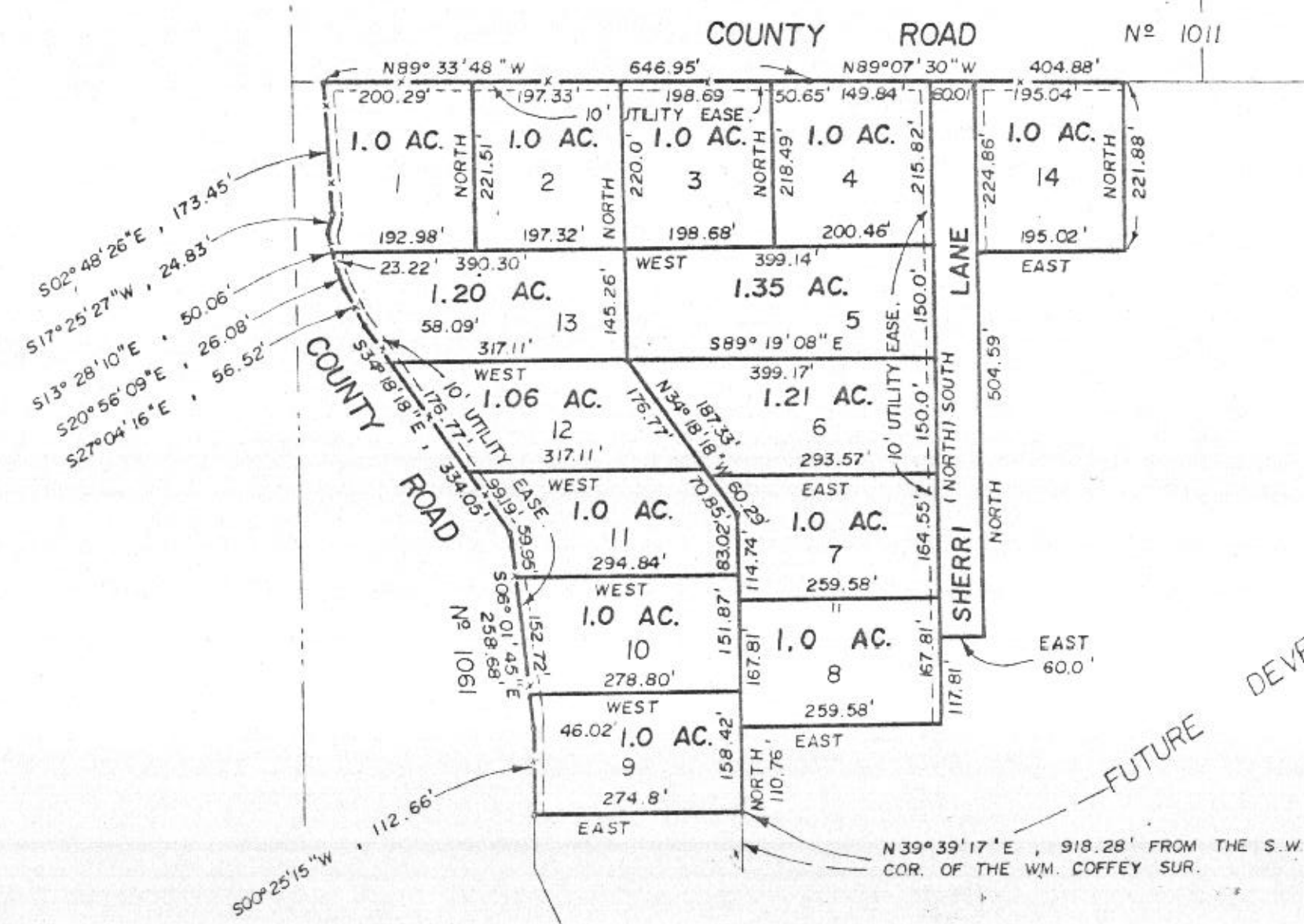


W. S. NEWSOM SUR.  
AB. - 2339

J. R. CLIFTON SUR.  
AB. - 282



I. H. MEEK SUR.  
AB. - 894

105050

RECEIVED AND FILED  
FOR RECORD  
At 2:48 P.M.  
MAY 31 1985  
CARRIE REED, Co. Clerk,  
PARKER COUNTY, TEXAS  
By [Signature] Deputy  
10.080

WM. COFFEY SUR.  
AB. - 265

REPLAT OF  
WHISPERING OAKS  
PHASE II  
BEING A PART OF THE WM.  
COFFEY SUR. AB. - 265  
PARKER COUNTY, TEXAS

STATE OF TEXAS COUNTY OF PARKER  
I hereby certify that this instrument was filed  
on the date and time stamped hereon by me and  
was duly recorded in the volume and page of the  
named records of Parker County as stamped here-  
on by me.  
RECORDED MAY 31 1985  
[Seal] Carrie Reed  
County Clerk, Parker County, Tex.

SCALE 1" = 200'  
LEGEND  
○ IRON PIPE  
● STEEL ROD  
⊗ FENCE CORNER  
-X- FENCE

HUGHES AND ASSOCIATES  
LAND SURVEYING  
CIVIL ENGINEERING  
LAND PLANNING  
111 E. COLUMBIA, SUITE E WEATHERFORD, TEXAS  
OFFICE 594-5374 OR 461-7619 HOME 594-2165  
[Signature] certify that this map  
was prepared from field notes of an actual survey made by me or  
under my supervision and to the best of my knowledge and belief  
represents said survey.  
Date 3/85 No. 12,288