

COUNTY ROAD
S 0° 20' 4
5741.7

A 220

W. J. EDDLEMAN SUR.
A. 452

T & P R.R. CO. SUR.
SEC. 315 A. 1527

TR. 1
B. J. FARMER
TO - A. C. Mc MILLIAN
VOL. 500, PAGE 282

755.752 AC

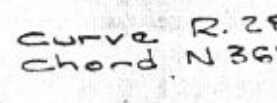
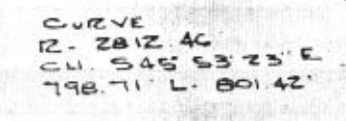
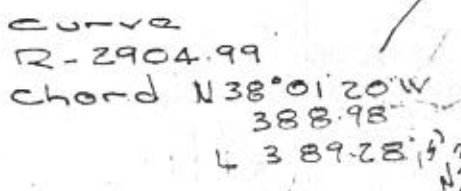
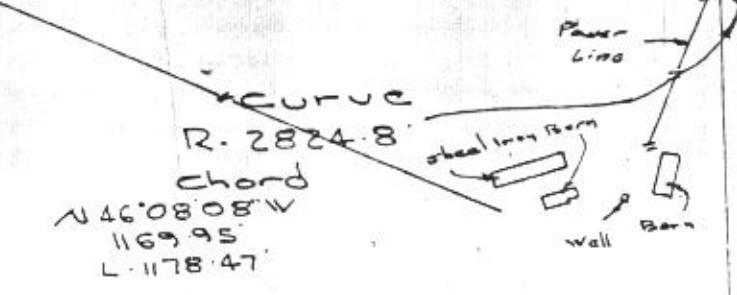
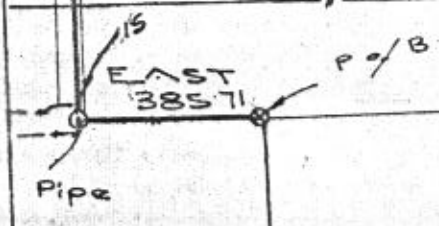
V. D. WATSON SUR.
A. 2186

T & P R.R. CO. SUR.
SEC. 315 A. 1528

R. F. SHERRELL SUR.
A. 2757

B. J. FARMER
TO - RUY KNEPPER
VOL. 559, PAGE 483

W. S. FONDREUS



A. C. Mc MILLIAN
TO - B. J. FARMER.
VOL. 480, PAGE 299

B. J. FARMER
TO - W. L. B. (JAMES MORGAN)
VOL. 607, PAGE 170

A. C. Mc MILLIAN
TO - B. J. FARMER
VOL. 480, PAGE 299

A-220

SHEET 1 OF 2