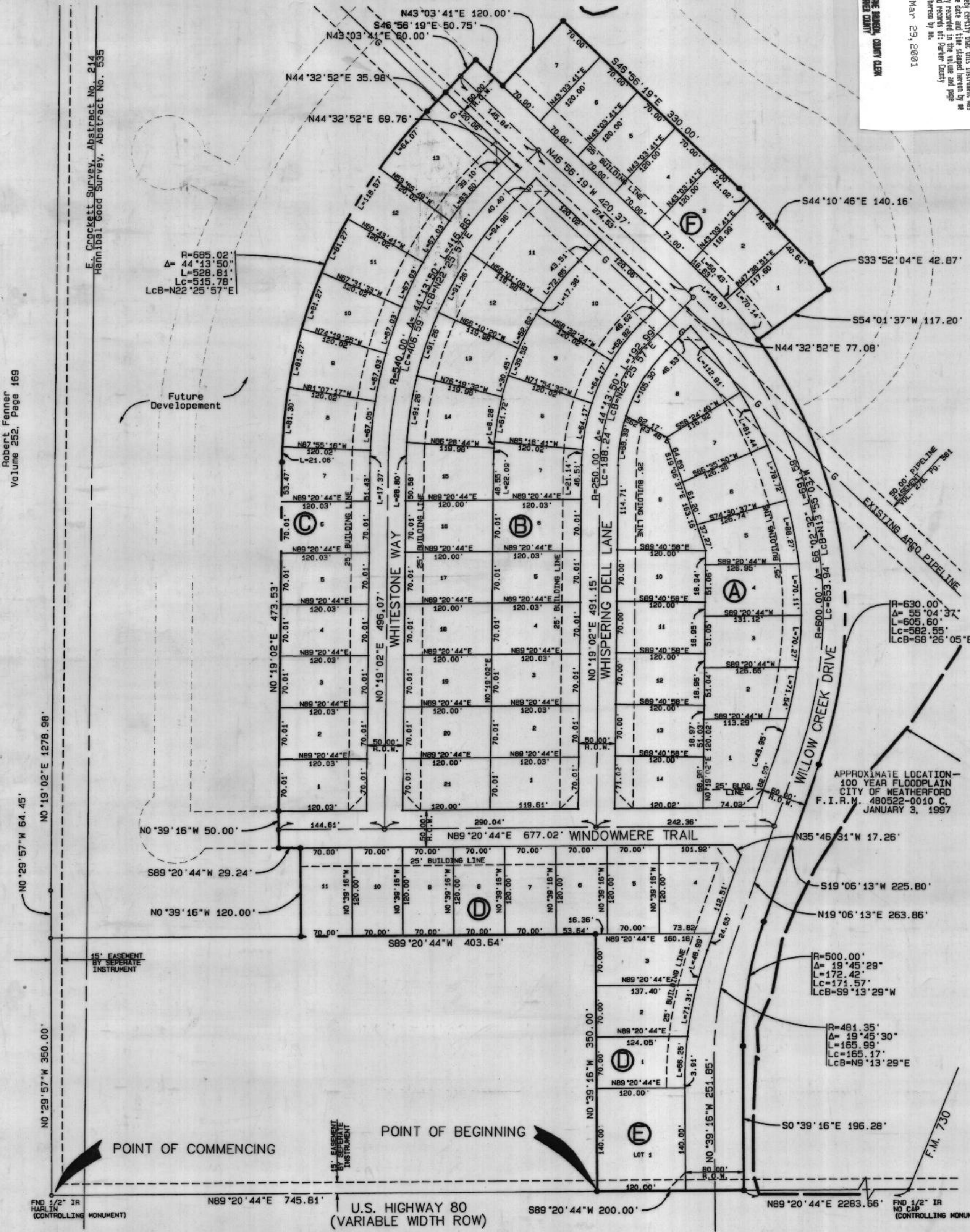


FILED FOR RECORDS
 OFFICE OF PUBLIC RECORDS
 City of Weatherford, Texas
 Document Number: 081151
 Date: 08/11/2000
 By: Melissa Williams
 COUNTY OF PARKER
 LIBRARIAN
 I hereby certify that this instrument was filed on the date and time stamped herein, by me and was duly recorded in the value and page of the master records of Parker County as stamped herein by me.
 Mar 29, 2001
 PARKER COUNTY CLERK

PC 0588



LOT	SQUARE FOOTAGE	ACRES
BLOCK A		
1	11322	0.260
2	6452	0.194
3	9073	0.208
4	9083	0.209
5	9000	0.207
6	8900	0.204
7	10118	0.232
8	12376	0.284
9	15156	0.348
10	8400	0.193
11	8400	0.193
12	8400	0.193
13	8400	0.193
14	8400	0.193
BLOCK B		
1	8402	0.193
2	8402	0.193
3	8402	0.193
4	8402	0.193
5	8402	0.193
6	8402	0.193
7	6796	0.202
8	9382	0.215
9	9382	0.215
10	14593	0.335
11	15102	0.347
12	9674	0.222
13	9674	0.222
14	9674	0.222
15	9001	0.207
16	8400	0.193
17	8400	0.193
18	8400	0.193
19	8400	0.193
20	8400	0.193
21	8400	0.193
BLOCK C		
1	8402	0.193
2	8402	0.193
3	8402	0.193
4	8402	0.193
5	8402	0.193
6	8402	0.193
7	8601	0.197
8	8902	0.204
9	8900	0.204
10	8900	0.204
11	8900	0.204
12	8900	0.204
13	15605	0.358
BLOCK D		
1	8489	0.195
2	9095	0.209
3	10370	0.238
4	11339	0.260
5	9317	0.214
6	8400	0.193
7	8400	0.193
8	8400	0.193
9	8400	0.193
10	8400	0.193
11	8400	0.193
BLOCK E		
1	16800	0.386
BLOCK F		
1	9094	0.209
2	8582	0.199
3	8509	0.195
4	8400	0.193
5	8400	0.193
6	8400	0.193
7	8400	0.193

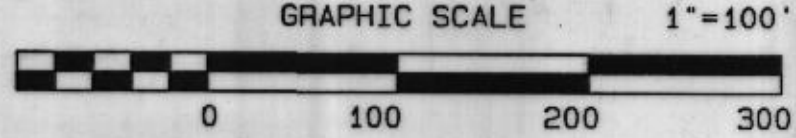
Robert Fenner
 Volume 252, Page 169

R=630.00'
 Δ=55°04'37"
 L=605.60'
 Lc=582.55'
 LcB=58°26'05"E

APPROXIMATE LOCATION -
 100 YEAR FLOODPLAIN
 CITY OF WEATHERFORD
 F.I.R.M. 480522-0010 C
 JANUARY 3, 1997

R=500.00'
 Δ=19°45'29"
 L=172.42'
 Lc=171.57'
 LcB=59°13'29"W

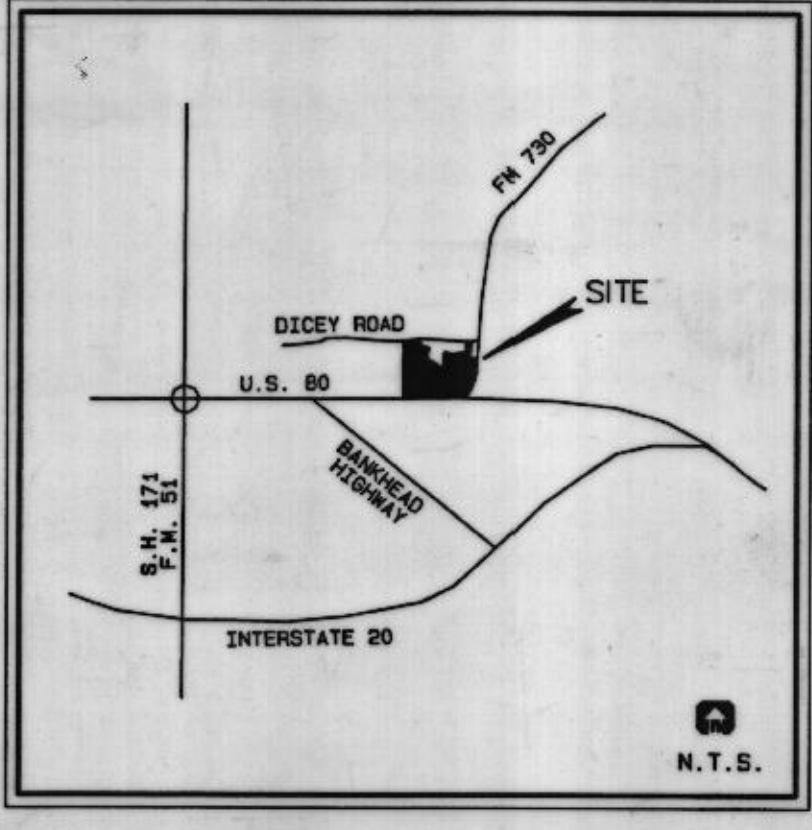
R=481.35'
 Δ=19°45'30"
 L=165.99'
 Lc=165.17'
 LcB=59°13'29"E



NOTE: BASIS OF BEARING FOR THIS PLAT IS THE CITY OF WEATHERFORD GIS COORDINATE SYSTEM

**FINAL PLAT
 WILLOW CREEK PHASE 1**

Hannibal Good Survey
 Abstract No.535
 City of Weatherford
 Parker County, Texas



LOCATION MAP

25' X 25' VISIBILITY TRIANGLE
 TYPICAL ALL STREET INTERSECTIONS