

CITY COMMISSION OF WILLOW PARK, TEXAS
 APPROVED THE 9th DAY OF APRIL, 1983
 BY _____

APPROVED FOR RECORDATION, AND THE 9th DAY OF APRIL, 1983, BY THE
 COUNTY CLERK OF PARKER COUNTY, TEXAS

_____, COUNTY JUDGE
 _____, COMMISSIONER
 _____, COMMISSIONER
 _____, COMMISSIONER
 _____, COMMISSIONER

APPROVAL OF THIS PLAT FOR RECORD IS NOT TO BE CONSTRUED AS
 ACCEPTANCE OF THE ROAD DEPICTED THEREON AS COUNTY MAINTAINED
 ROADS.

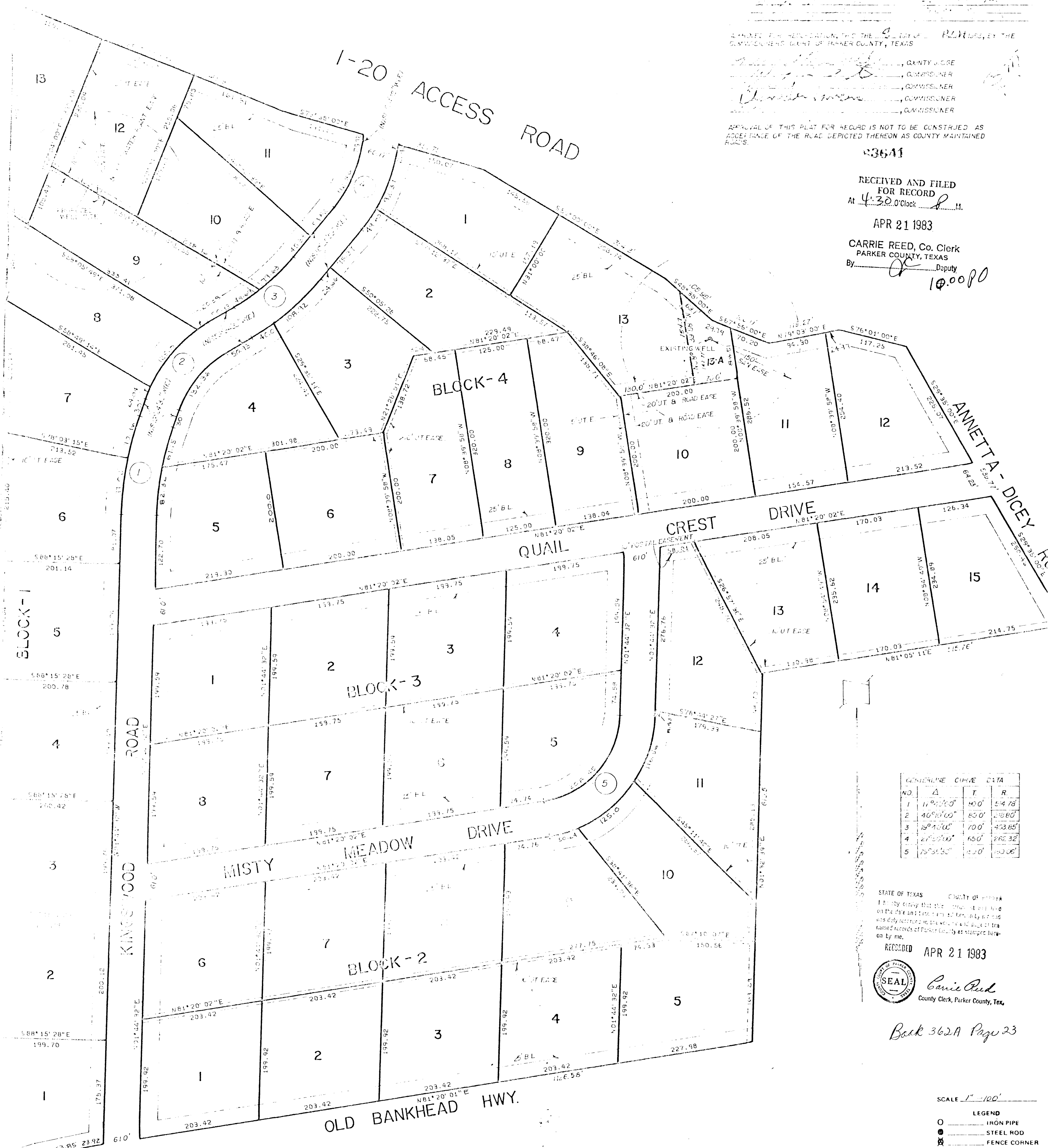
43641

RECEIVED AND FILED
 FOR RECORD
 At 4:30 O'Clock P.M.

APR 21 1983

CARRIE REED, Co. Clerk
 PARKER COUNTY, TEXAS

By _____ Deputy
 10.0080



NO.	Δ	T	R
1	11°20'00"	40'	54.78'
2	46°10'00"	80'	108.80'
3	18°45'00"	100'	133.65'
4	27°20'00"	650'	862.32'
5	75°31'30"	800'	1000.00'

STATE OF TEXAS COUNTY OF PARKER
 I hereby certify that this plat was laid out and approved in accordance with the laws of the State of Texas and that I am duly qualified and authorized to perform the duties of my office as County Clerk of Parker County, Texas.

RECORDED APR 21 1983

SEAL
 Carrie Reed
 County Clerk, Parker County, Tex.

Book 362A Page 23

SCALE 1" = 100'
 LEGEND
 ○ IRON PIPE
 ● STEEL ROD
 ⊠ FENCE CORNER
 * FENCE

NOTE: THE AVERAGE LOT SIZE IN THIS SUBDIVISION IS OVER 40,000 SQ. FT.
 NOTE: A 5 FT. STRIP SHALL BE RETAINED ALONG EITHER SIDE OF ALL STREETS AS UTILITY EASEMENT
 NOTE: SEE SHEET 2 FOR DEDICATION

WILLOW SPRINGS
 AN ADDITION TO THE CITY OF WILLOW PARK,
 PARKER COUNTY, TEXAS
 WM. T. BOWDEN PROPERTIES, INC
 4201 FT. WORTH HWY.
 WEATHERFORD, TEXAS
 817-292-8880



HUGHES AND ASSOCIATES
 LAND SURVEYING
 CIVIL ENGINEERING
 LAND PLANNING
 1111 E. COLUMBIA, SUITE E WEATHERFORD, TEXAS
 OFFICE 594-5374 OR 481-7819 HOME 594-2165
 _____ certify that this plat was prepared from field notes of an actual survey made by me or under my supervision and to the best of my knowledge and belief represents said survey.
 Date MARCH 1983 No. 11,005

(SHEET 1 OF 2 SHEETS)