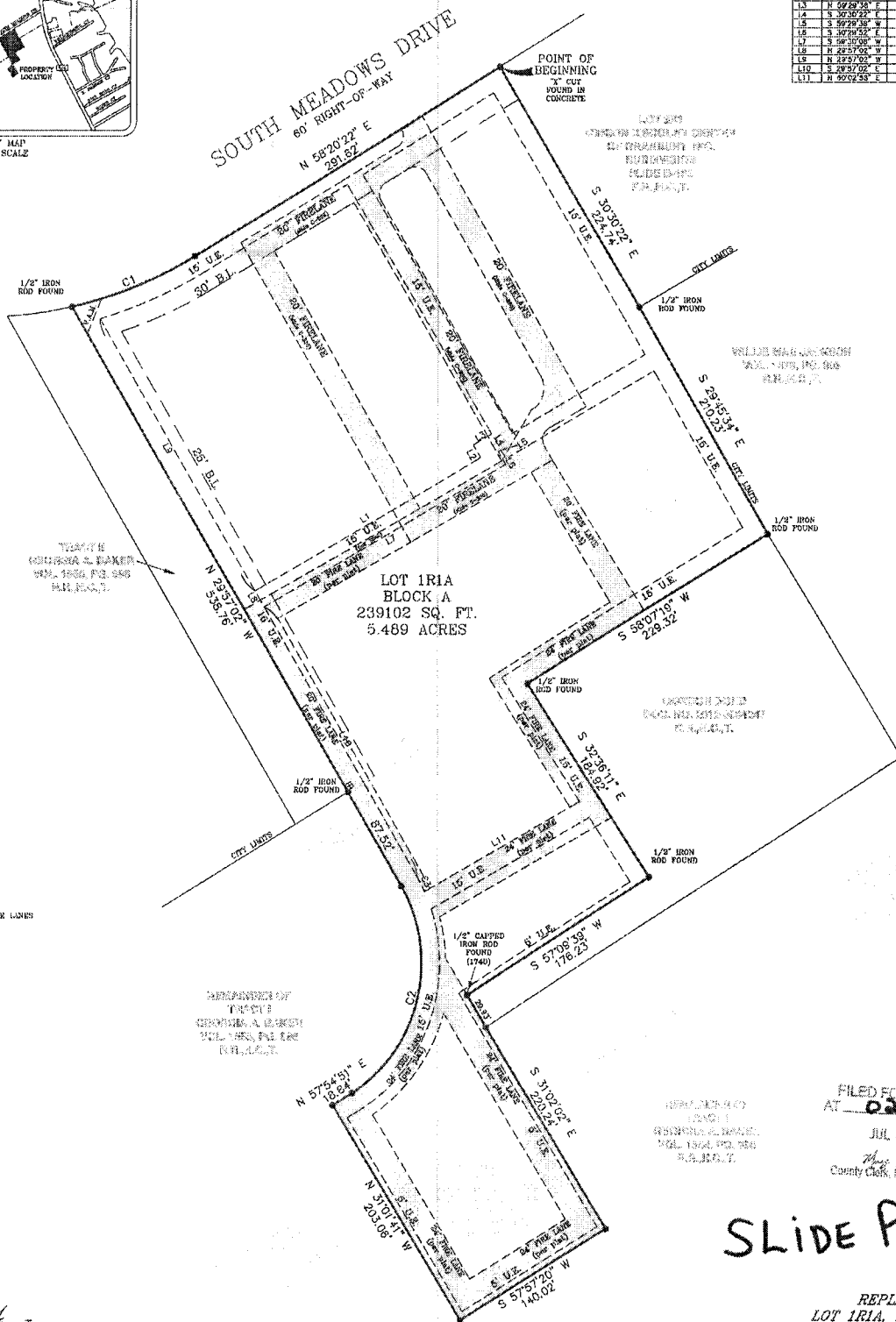


VICINITY MAP
NOT TO SCALE

CURVE TABLE					
CURVE	RADIUS	DELTA ANGLE	ARC LENGTH	CHORD BEARING	CHORD LENGTH
C1	329.82	18°49'58"	108.41	N 67°42'30" E	107.92
C2	125.00	88°33'18"	188.83	N 13°19'20" E	171.34
C3	140.00	09°29'59"	13.42	S 27°12'20" E	13.43

LINE TABLE		
LINE	BEARING	DISTANCE
L1	N 69°30'08" E	213.17
L2	N 50°29'58" W	11.84
L3	N 52°29'57" E	17.43
L4	S 50°30'22" E	15.00
L5	S 39°29'36" W	2.44
L6	S 30°30'32" E	222.74
L7	S 58°30'08" E	228.28
L8	N 42°30'08" W	15.00
L9	N 12°07'29" E	223.41
L10	S 28°37'02" E	290.87
L11	N 02°02'53" E	148.17



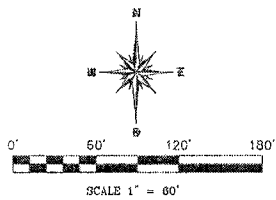
TRACT B
GEORGE A. BAKER
VOL. 188A, PG. 246
H.L.P.L.C.T.

LOT 11A
BLOCK A
239102 SQ. FT.
5.489 ACRES

REPLAT OF
TRACT C
GEORGE A. BAKER
VOL. 188A, PG. 246
H.L.P.L.C.T.

FILED FOR RECORD
AT 02:11P M
JUL 23 2013
Hood County
County Clerk, Hood County, TX

SLIDE P-448



FILED THIS MAP... DATE OF... 2013
H.L.P.L.C.T. HALL RECORDS, HOOD COUNTY, TEXAS

(Owner)
ACI Shops and
Storage LTD
1101 Tracy Lynn Drive
Abilene, Texas 79601
Phone: 325-678-5152

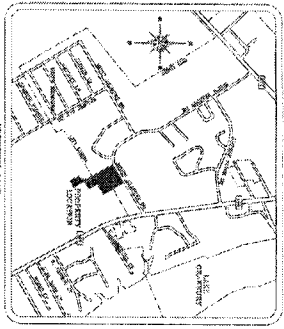
(Owner)
Georgia A. Baker
P.O. Box 637
Granbury, Texas 78048
Phone: 017-998-4622



Enprotec/Ribbs & Todd Inc.
2901 Glen Rose Highway, Ste. 107
Granbury, Texas 78048
Office: (817) 578-0861
Fax: (817) 578-5850
Website: www.surveyorribbsinc.org

REPLAT
LOT 11A, BLOCK A
ACI ADDITION
BEING A REPLAT OF LOT 11A, BLOCK A, ACI
ADDITION, RECORDED IN SLIDE C-335, PLAT
RECORDS, HOOD COUNTY, TEXAS, AND A
1.480 ACRE PORTION OF A TRACT OF LAND
SITUATED IN THE MILAM COUNTY SCHOOL
LAND SURVEY, ABSTRACT NO. 348 AND THE
Y. G. LIPSCOMB SURVEY, ABSTRACT NO. 382,
HOOD COUNTY, TEXAS

SHEET 2 OF 2
JOB NO. U./SURVEY/2012/221816 PLAT DATE: 01/30/2013 DRAWN BY: SKG



REPLAT

LOT 14A BLOCK A

ACI ADDITION

BEING A REPLAT OF LOT 14A, BLOCK A, ACI ADDITION, NEIGHBORED BY SEABE 6-7-563, PLAT RECORDS, HOODS COUNTY, TEXAS, AND A LAND ACRES PARTION OF A TRACT OF LAND SET ASIDE IN THE MILLER COUNTY SCHOOL LAND SURVEY, ABSTRACT NO. 3448 AND THE 1/2 ACRES SURVEY, ABSTRACT NO. 3448, HOOD COUNTY, TEXAS.

APPROVED BY THE BOARD OF COUNTY COMMISSIONERS, HOOD COUNTY, TEXAS, ON 7-2-13

APPROVED BY THE BOARD OF COUNTY COMMISSIONERS, HOOD COUNTY, TEXAS, ON 7-2-13

APPROVED BY THE BOARD OF COUNTY COMMISSIONERS, HOOD COUNTY, TEXAS, ON 7-2-13

COMMISSIONER'S COMMENTS:

The proposed replat of Lot 14A, Block A, ACI Addition, is a replat of a portion of the ACI Addition, which was previously approved by the Board of County Commissioners on 7-2-13. The proposed replat is a replat of a portion of the ACI Addition, which was previously approved by the Board of County Commissioners on 7-2-13. The proposed replat is a replat of a portion of the ACI Addition, which was previously approved by the Board of County Commissioners on 7-2-13.

APPROVED BY THE BOARD OF COUNTY COMMISSIONERS, HOOD COUNTY, TEXAS, ON 7-2-13

APPROVED BY THE BOARD OF COUNTY COMMISSIONERS, HOOD COUNTY, TEXAS, ON 7-2-13

APPROVED BY THE BOARD OF COUNTY COMMISSIONERS, HOOD COUNTY, TEXAS, ON 7-2-13

COMMISSIONER'S COMMENTS:

The proposed replat of Lot 14A, Block A, ACI Addition, is a replat of a portion of the ACI Addition, which was previously approved by the Board of County Commissioners on 7-2-13. The proposed replat is a replat of a portion of the ACI Addition, which was previously approved by the Board of County Commissioners on 7-2-13. The proposed replat is a replat of a portion of the ACI Addition, which was previously approved by the Board of County Commissioners on 7-2-13.

APPROVED BY THE BOARD OF COUNTY COMMISSIONERS, HOOD COUNTY, TEXAS, ON 7-2-13

APPROVED BY THE BOARD OF COUNTY COMMISSIONERS, HOOD COUNTY, TEXAS, ON 7-2-13

APPROVED BY THE BOARD OF COUNTY COMMISSIONERS, HOOD COUNTY, TEXAS, ON 7-2-13

COMMISSIONER'S COMMENTS:

The proposed replat of Lot 14A, Block A, ACI Addition, is a replat of a portion of the ACI Addition, which was previously approved by the Board of County Commissioners on 7-2-13. The proposed replat is a replat of a portion of the ACI Addition, which was previously approved by the Board of County Commissioners on 7-2-13. The proposed replat is a replat of a portion of the ACI Addition, which was previously approved by the Board of County Commissioners on 7-2-13.

APPROVED BY THE BOARD OF COUNTY COMMISSIONERS, HOOD COUNTY, TEXAS, ON 7-2-13

APPROVED BY THE BOARD OF COUNTY COMMISSIONERS, HOOD COUNTY, TEXAS, ON 7-2-13

APPROVED BY THE BOARD OF COUNTY COMMISSIONERS, HOOD COUNTY, TEXAS, ON 7-2-13

COMMISSIONER'S COMMENTS:

The proposed replat of Lot 14A, Block A, ACI Addition, is a replat of a portion of the ACI Addition, which was previously approved by the Board of County Commissioners on 7-2-13. The proposed replat is a replat of a portion of the ACI Addition, which was previously approved by the Board of County Commissioners on 7-2-13. The proposed replat is a replat of a portion of the ACI Addition, which was previously approved by the Board of County Commissioners on 7-2-13.

COMMISSIONER'S COMMENTS:

The proposed replat of Lot 14A, Block A, ACI Addition, is a replat of a portion of the ACI Addition, which was previously approved by the Board of County Commissioners on 7-2-13. The proposed replat is a replat of a portion of the ACI Addition, which was previously approved by the Board of County Commissioners on 7-2-13. The proposed replat is a replat of a portion of the ACI Addition, which was previously approved by the Board of County Commissioners on 7-2-13.

APPROVED BY THE BOARD OF COUNTY COMMISSIONERS, HOOD COUNTY, TEXAS, ON 7-2-13

APPROVED BY THE BOARD OF COUNTY COMMISSIONERS, HOOD COUNTY, TEXAS, ON 7-2-13

APPROVED BY THE BOARD OF COUNTY COMMISSIONERS, HOOD COUNTY, TEXAS, ON 7-2-13