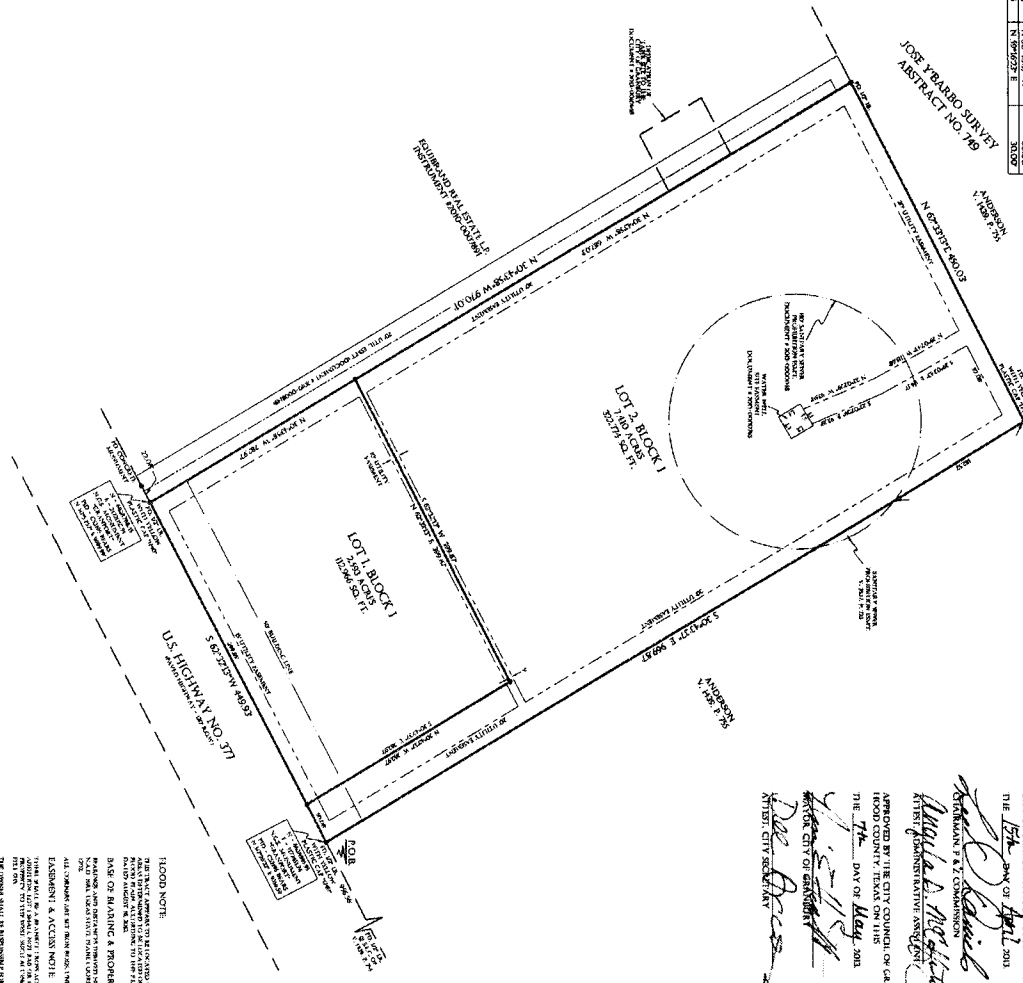


LINE	BEARING	DISTANCE
1	S 89°22' W	200.0
2	N 89°22' E	200.0
3	S 89°22' W	200.0
4	N 89°22' E	200.0
5	S 89°22' W	200.0
6	N 89°22' E	200.0

JOSE YBARBO SURVEY  
ABSTRACT NO. 769



**OWNER:**  
EQUIUR AND CONDOMINIUM  
CANANDAUV, TEXAS 76048  
(817) 601-7964

**DEVELOPER:**  
ATTRA BRAD DAVIS  
WEATHERFORD, TEXAS 76086  
(817) 671-4454

**SURVEYOR:**  
PATRICK CARTER, R.F.L.S.  
110 N. PALO PINO  
WEATHERFORD, TEXAS 76086  
(817) 594-0401

**FINAL PLAT APPROVAL**  
APPROVED BY PLANNING & ZONING COMMISSION  
CITY OF CANANBAU, HOOD COUNTY, TEXAS ON THE  
14<sup>th</sup> DAY OF APRIL 2013  
*Patricia Davis*  
CITY CLERK

APPROVED BY THE CITY COUNCIL OF CANANBAU,  
HOOD COUNTY, TEXAS ON THE  
14<sup>th</sup> DAY OF MAY 2013  
*Patricia Davis*  
CITY CLERK

**FLOOD NOTE:**

THE PLAT IS SUBJECT TO FLOODING AS SHOWN ON THE FLOOD HAZARD MAP OF HOOD COUNTY, TEXAS, WHICH IS ON FILE WITH THE COUNTY CLERK'S OFFICE. THE PLAT IS SUBJECT TO FLOODING AS SHOWN ON THE FLOOD HAZARD MAP OF HOOD COUNTY, TEXAS, WHICH IS ON FILE WITH THE COUNTY CLERK'S OFFICE. THE PLAT IS SUBJECT TO FLOODING AS SHOWN ON THE FLOOD HAZARD MAP OF HOOD COUNTY, TEXAS, WHICH IS ON FILE WITH THE COUNTY CLERK'S OFFICE.

FILED THIS 28<sup>th</sup> DAY OF MAY 2013  
IN SLIDE 2433 THE PLAT RECORDS OF HOOD COUNTY, TEXAS

STATE OF TEXAS  
COUNTY OF HOOD  
I, **Patricia Davis**, County Clerk of Hood County, Texas, do hereby certify that the within and foregoing plat of the subdivision of land, as shown on the plat, is in accordance with the laws of the State of Texas, and that the same has been duly filed for record in the public records of this county, and that the same is a true and correct copy of the original plat as filed for record.

WITNESSED MY HAND AND SEAL OF OFFICE THIS 14<sup>th</sup> DAY OF APRIL 2013.

*Patricia Davis*  
COUNTY CLERK FOR THE STATE OF TEXAS

STATE OF TEXAS  
COUNTY OF HOOD  
I, **Patricia Davis**, County Clerk of Hood County, Texas, do hereby certify that the within and foregoing plat of the subdivision of land, as shown on the plat, is in accordance with the laws of the State of Texas, and that the same has been duly filed for record in the public records of this county, and that the same is a true and correct copy of the original plat as filed for record.

WITNESSED MY HAND AND SEAL OF OFFICE THIS 14<sup>th</sup> DAY OF APRIL 2013.

*Patricia Davis*  
COUNTY CLERK FOR THE STATE OF TEXAS

STATE OF TEXAS  
COUNTY OF HOOD  
I, **Patricia Davis**, County Clerk of Hood County, Texas, do hereby certify that the within and foregoing plat of the subdivision of land, as shown on the plat, is in accordance with the laws of the State of Texas, and that the same has been duly filed for record in the public records of this county, and that the same is a true and correct copy of the original plat as filed for record.

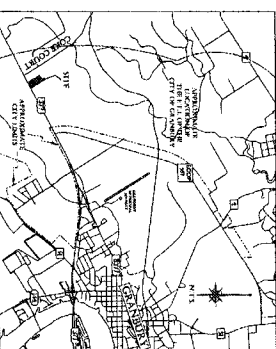
WITNESSED MY HAND AND SEAL OF OFFICE THIS 14<sup>th</sup> DAY OF APRIL 2013.

*Patricia Davis*  
COUNTY CLERK FOR THE STATE OF TEXAS

STATE OF TEXAS  
COUNTY OF HOOD  
I, **Patricia Davis**, County Clerk of Hood County, Texas, do hereby certify that the within and foregoing plat of the subdivision of land, as shown on the plat, is in accordance with the laws of the State of Texas, and that the same has been duly filed for record in the public records of this county, and that the same is a true and correct copy of the original plat as filed for record.

WITNESSED MY HAND AND SEAL OF OFFICE THIS 14<sup>th</sup> DAY OF APRIL 2013.

*Patricia Davis*  
COUNTY CLERK FOR THE STATE OF TEXAS



**CARTER SURVEYING**  
OF & MAPPING, INC.  
110 N. PALO PINO  
WEATHERFORD, TX 76086  
817.594.0400  
FAX 817.594.0403

**FINAL PLAT**  
LOT 1 & LOT 2, BLOCK 1  
EQUIUR AND SUBDIVISION  
AN ADDITION TO  
HOOD COUNTY, TEXAS  
BEING A 10,003 ACRES SUBDIVISION  
OUT OF THE JOSE YBARBO SURVEY  
ABSTRACT NO. 769 HOOD COUNTY, TEXAS  
APRIL 2013