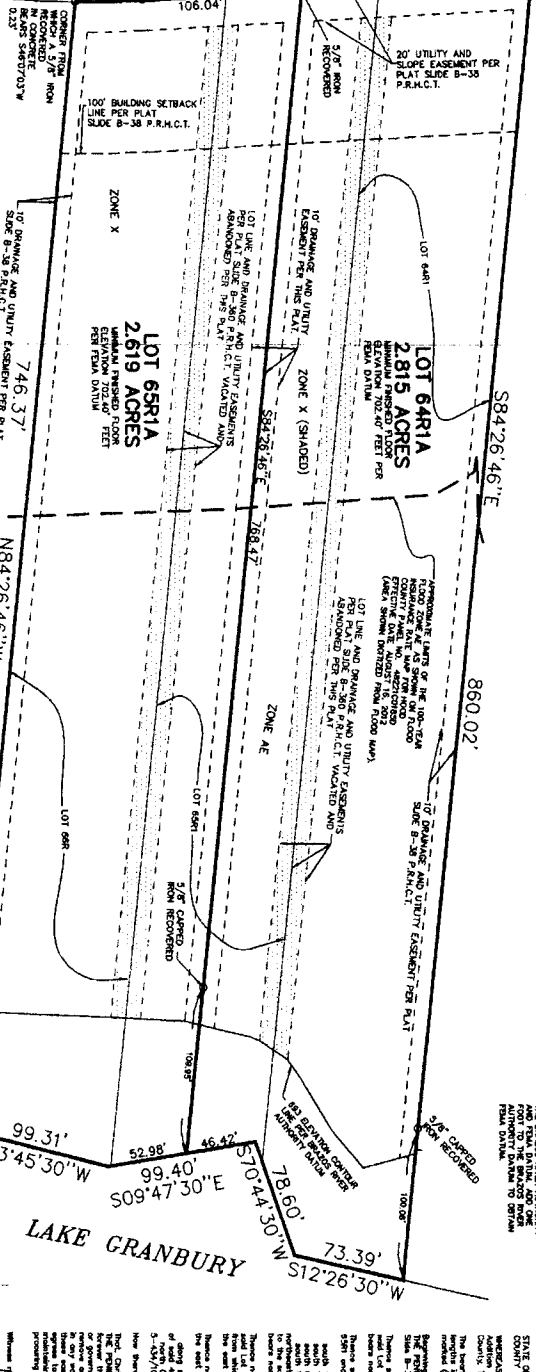


PLACE OF BEGINNING ACCOMPANYING DESCRIPTION

THE PENINSULA ON LAKE GRANBURY
 LOT 63
 SLIDE B-30
 P.R.H.C.T.

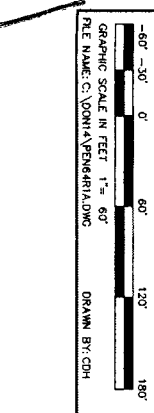


FLOOD ZONE DESIGN
 ORIGINAL 100-YEAR FLOOD
 DETERMINED BY 100-YEAR FLOOD
 ELEVATION
 REVISIONS
 ZONE AE
 ZONE X (SHADED)
 BASIS FOR ELEVATIONS USED IN
 DETERMINING THE FLOOD ELEVATIONS
 THE ELEVATIONS OFFER FROM
 THE 200-YEAR FLOOD ELEVATION
 FROM THE 100-YEAR FLOOD
 IS 2-1/2 FEET.
 BASIS FOR ELEVATIONS USED IN
 DETERMINING THE FLOOD ELEVATIONS
 THE ELEVATIONS OFFER FROM
 THE 200-YEAR FLOOD ELEVATION
 FROM THE 100-YEAR FLOOD
 IS 2-1/2 FEET.

THE PENINSULA ON LAKE GRANBURY
 LOT 67
 SLIDE B-38
 P.R.H.C.T.

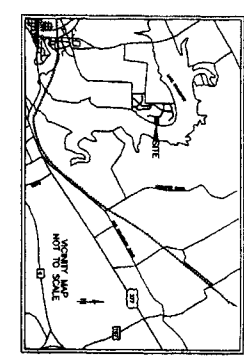
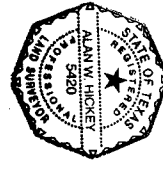
PROPERTY NOTES
 1) The easements for the utility and drainage lines crossing the water are shown on the plat as easements in fee, and shall be construed as such.
 2) The easements for the utility and drainage lines crossing the water are shown on the plat as easements in fee, and shall be construed as such.
 3) The easements for the utility and drainage lines crossing the water are shown on the plat as easements in fee, and shall be construed as such.
 4) The easements for the utility and drainage lines crossing the water are shown on the plat as easements in fee, and shall be construed as such.
 5) The easements for the utility and drainage lines crossing the water are shown on the plat as easements in fee, and shall be construed as such.

R-680.00'
 L=44.98'
 CO=N10°25'52\"/>



FILED THIS 6TH DAY OF FEB 2014
 County Clerk, Hood County, TX

THE PENINSULA ON LAKE GRANBURY
 being all of Lots 64RIA, 65RIA, and 66R of THE
 PENINSULA ON LAKE GRANBURY, as said lots appear
 upon the map thereof recorded in Slide B-360 of
 the Plat Records of Hood County, Texas.
 We marked the corners as shown hereon.
 The bearings and coordinate positions are per the
 Texas State Plane
 Coordinate System North Central Zone, NAD83
 (1993).
 The lengths shown hereon are horizontal ground
 lengths.
 The basis for elevations per N.G.S. 1929 Datum.
 Surveyed on the ground January 9, 2014.
 BROOKES BAKER SURVEYORS



STATE OF TEXAS
 COUNTY OF HOOD
 I, Alan W. Hickey, Notary Public in and for the State of Texas, do hereby certify that the foregoing plat was duly recorded in the Public Records of Hood County, Texas, on the 6th day of February, 2014, at 11:00 A.M., and that the same is a true and correct copy of the original as the same was presented to me for recording. My commission expires January 1, 2014.
 Notary Public
 Alan W. Hickey, State of Texas

FILED FOR RECORD
 FEB 06 2014
 County Clerk, Hood County, TX
 OWNER:
 ALAN W. HICKEY
 BROOKES BAKER SURVEYORS
 930 HICKEY COURT
 GRANBURY, TEXAS 76049
 (817) 279-0232
 ah@brookesbakerversors.com