

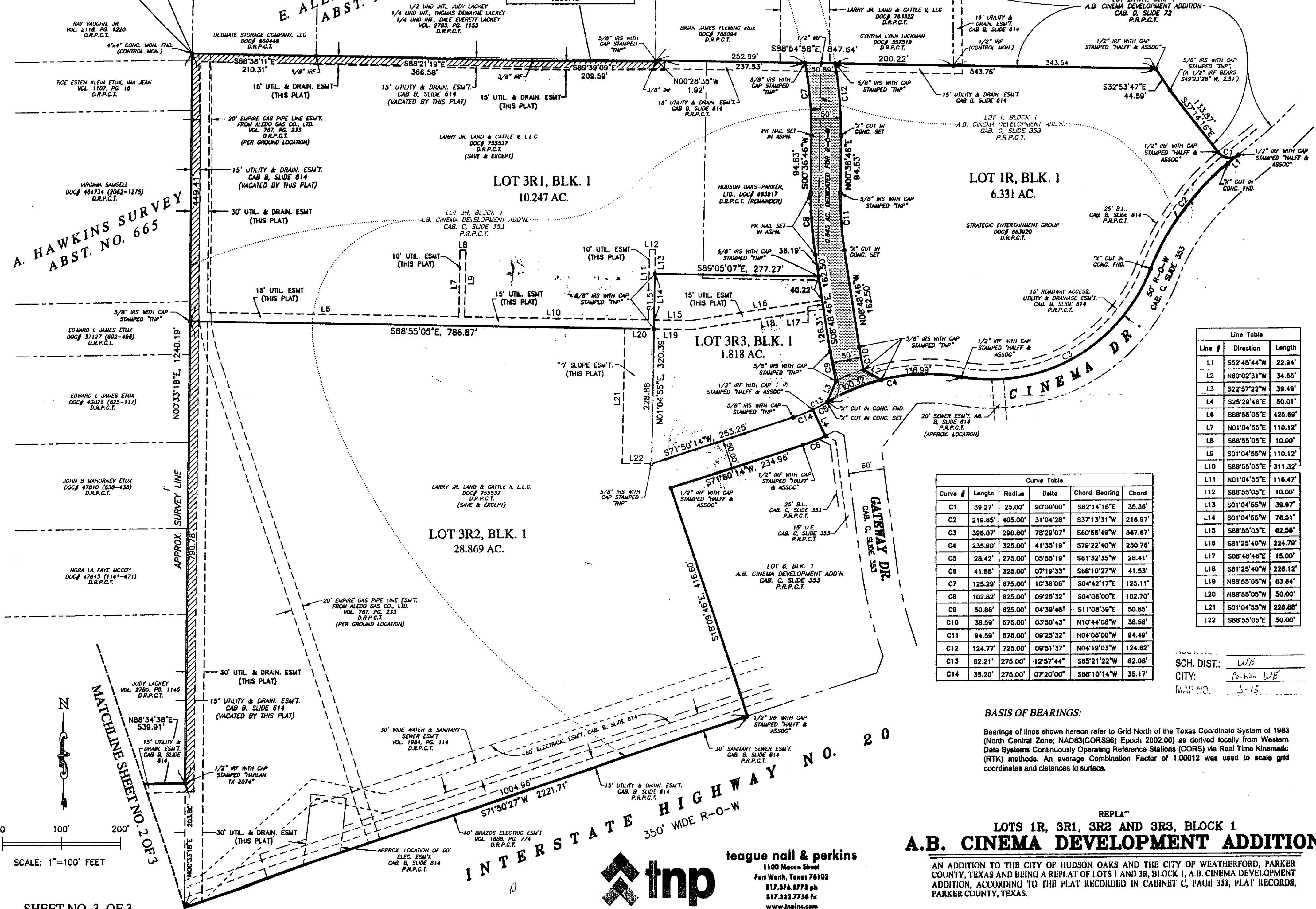
Jeanne Brunson
 201200402
 12/06/2012 10:30 AM
 Fee: 74.00
 Jeanne Brunson, County Clerk
 Parker County, Texas
 PLAT

E. ALEXANDER SURVEY
ABST. NO. 1923

LINE FOR DIRECTIONAL CONTROL
 AND NORTH LINE OF LOT 3R
 S88°54'58"E,
 1290.49'

D-208

PLACE OF BEGINNING



Line Table

Line #	Direction	Length
L1	S52°45'44"W	22.94'
L2	N80°02'31"W	34.55'
L3	S22°57'22"W	39.49'
L4	S25°29'48"E	50.01'
L6	S88°55'05"E	425.69'
L7	N01°04'55"E	110.12'
L8	S88°55'05"E	10.00'
L9	S01°04'55"W	110.12'
L10	S88°55'05"E	311.32'
L11	N01°04'55"E	118.47'
L12	S88°55'05"E	10.00'
L13	S01°04'55"W	39.97'
L14	S01°04'55"W	76.51'
L15	S88°55'05"E	62.58'
L16	S81°25'40"W	224.79'
L17	S08°48'46"E	15.00'
L18	S81°25'40"W	226.12'
L19	N88°55'05"W	63.84'
L20	N88°55'05"W	50.00'
L21	S01°04'55"W	228.88'
L22	S88°55'05"E	50.00'

Curve Table

Curve #	Length	Radius	Delta	Chord Bearing	Chord
C1	39.27'	25.00'	90°00'00"	S82°14'16"E	35.36'
C2	219.85'	405.00'	31°04'28"	S37°13'31"W	216.97'
C3	398.07'	290.60'	78°29'07"	S60°55'49"W	367.67'
C4	235.90'	325.00'	41°35'19"	S79°22'40"W	230.76'
C5	28.42'	275.00'	05°55'19"	S61°32'35"W	28.41'
C6	41.55'	325.00'	07°19'33"	S68°10'27"W	41.53'
C7	125.29'	675.00'	10°38'08"	S04°42'17"E	125.11'
C8	102.82'	625.00'	09°25'32"	S04°08'00"E	102.70'
C9	50.86'	625.00'	04°39'46"	S11°08'39"E	50.85'
C10	38.59'	575.00'	03°50'43"	N10°44'08"W	38.58'
C11	94.59'	575.00'	08°25'32"	N04°08'00"W	94.48'
C12	124.77'	725.00'	09°51'37"	N04°19'03"W	124.62'
C13	62.21'	275.00'	12°57'44"	S65°21'22"W	62.08'
C14	35.20'	275.00'	07°20'00"	S68°10'14"W	35.17'

SCH. DIST.: WE
 CITY: Fort Worth WE
 MAP NO.: J-15

BASIS OF BEARINGS:

Bearings of lines shown hereon refer to Grid North of the Texas Coordinate System of 1983 (North Central Zone; NAD83(CORS96) Epoch 2002.00) as derived locally from Western Data Systems Continuously Operating Reference Stations (CORS) via Real Time Kinematic (RTK) methods. An average Combination Factor of 1.00012 was used to scale grid coordinates and distances to surface.

REPLA
LOTS 1R, 3R1, 3R2 AND 3R3, BLOCK 1
A.B. CINEMA DEVELOPMENT ADDITION

AN ADDITION TO THE CITY OF HUDSON OAKS AND THE CITY OF WEATHERFORD, PARKER COUNTY, TEXAS AND BEING A REPLAT OF LOTS 1 AND 3R, BLOCK 1, A.B. CINEMA DEVELOPMENT ADDITION, ACCORDING TO THE PLAT RECORDED IN CABINET C, PAGE 353, PLAT RECORDS, PARKER COUNTY, TEXAS.

SCALE: 1"=100' FEET

SHEET NO. 3 OF 3



teague nall & perkins
 1100 Macon Street
 Fort Worth, Texas 76102
 817.326.8773 ph
 817.333.7756 fx
 www.tnplnc.com