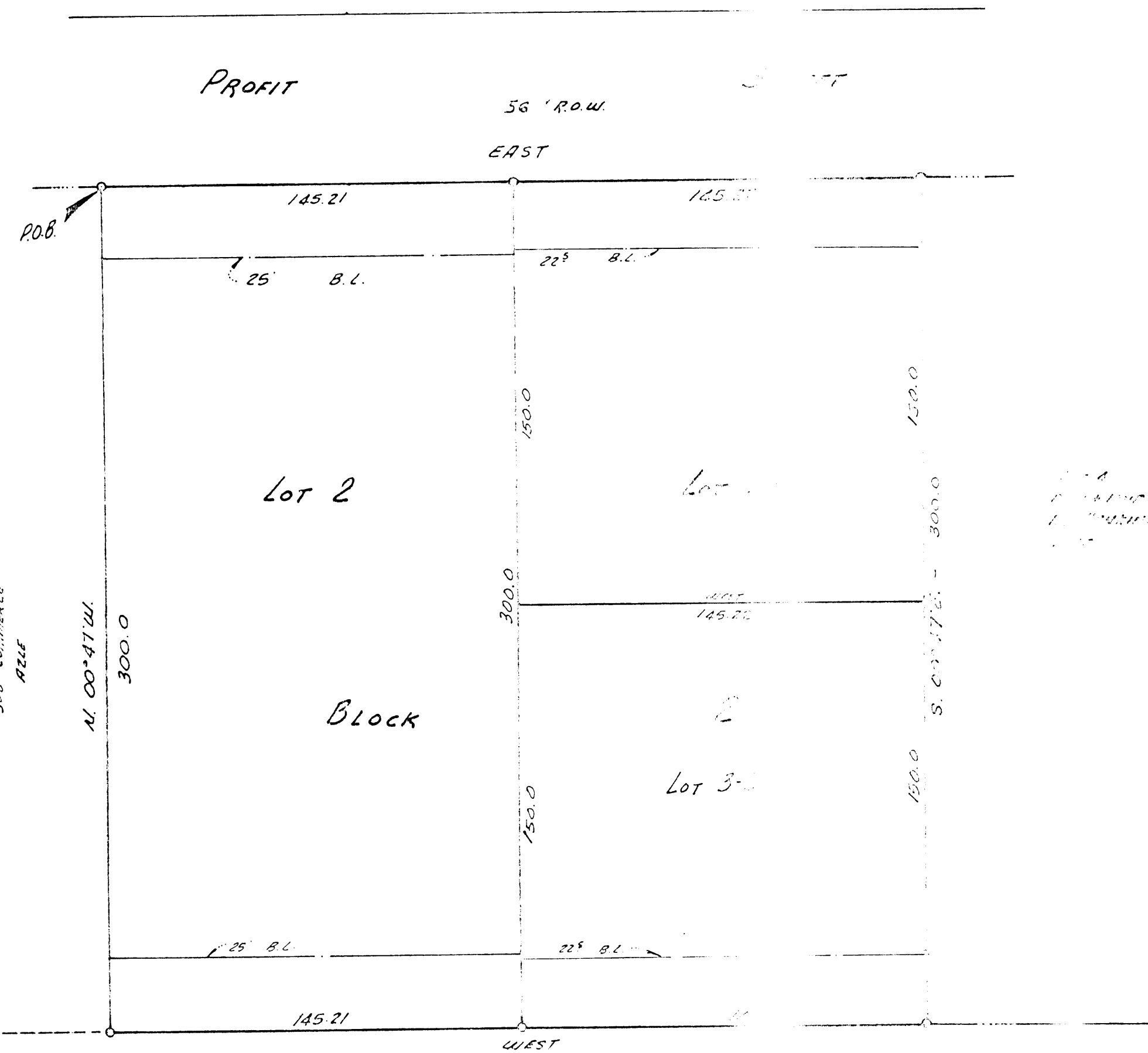


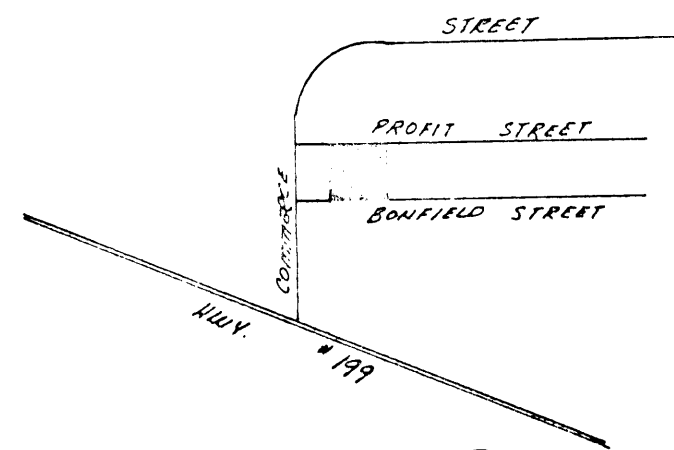
ADVANCED FUEL SYSTEMS  
308 COMMERCIAL  
AZLE



BONFIELD STREET  
56' R.O.W.

1985  
P.C. A SINC

BONFIELD ST.  
56' R.O.W.



VICINITY MAP

STATE OF TEXAS COUNTY OF PARKER  
I hereby certify that this instrument was filed  
on the date and time stamped hereon and that  
it was duly recorded in the volume and page of the  
public records of Parker County as shown hereon  
on by me.

RECORDED DEC 19 1985  
SEAL  
County Clerk, Parker County, TX

CITY OF AZLE, TEXAS  
APPROVED: \_\_\_\_\_  
BY MAYOR: \_\_\_\_\_  
BY SECRETARY: \_\_\_\_\_

(UNDEVELOPED)

OWNER'S INTEREST IN  
1564 RFD AND 1564  
AZLE, TEXAS

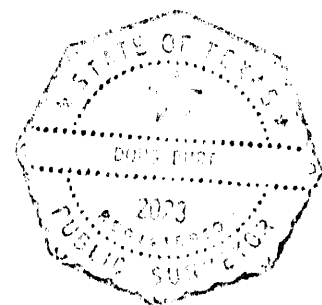
My commission expires

PLAT SHOWING

Lots 2, 3 at 38, Block 2, AZLE INDUSTRIAL PARK, SECTION ONE,  
AN ADDITION  
TO  
THE CITY OF AZLE  
BEING A SUBDIVISION OF A TRACT OF LAND IN THE  
T. & P. R.R. CO. SURVEY No. 7, ABSTRACT No. 1431,  
PARKER COUNTY, TEXAS.

PLANNING AND ZONING COMMISSION

APPROVED: \_\_\_\_\_  
BY SECRETARY: \_\_\_\_\_



Submitted on THE  
GROUND. SEPT. 85

Delta Surveying Co.  
Azle, Tx.

ADA 88255