

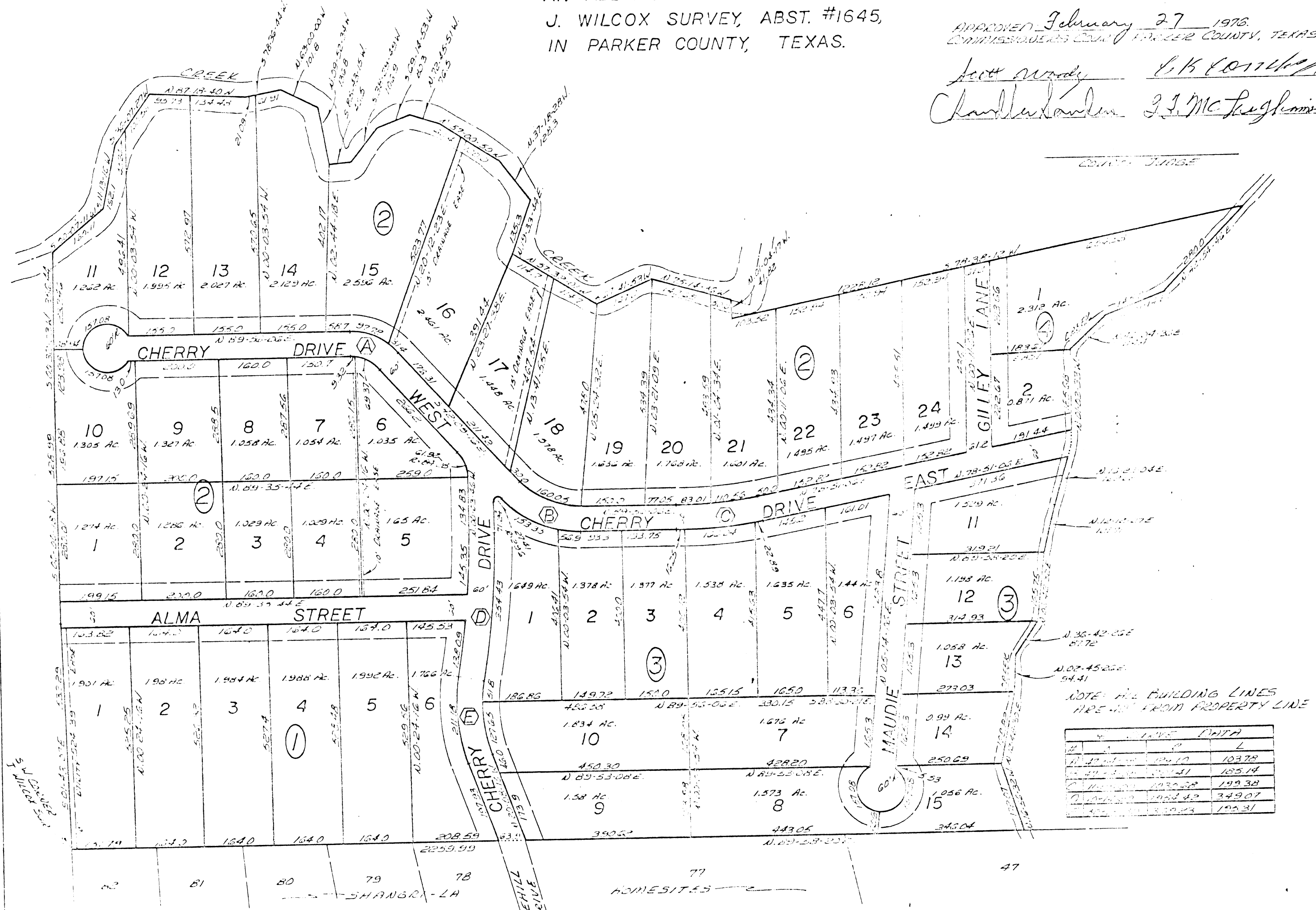
CHERRY VALLEY FARMS
 AN ADDITION OUT OF THE
 J. WILCOX SURVEY, ABST. #1645,
 IN PARKER COUNTY, TEXAS.

APPROVED February 27 1976
 COMMISSIONERS COURT PARKER COUNTY, TEXAS

John Woods
 Charles Lawler J. J. McLaughlin

45796

RECEIVED AND FILED
 FOR RECORD
 At 10 O'clock A.M.
 MAR 1 1976
 J. H. "Tommy" McDANIEL, Co. Clerk
 PARKER COUNTY, TEXAS
 By Deputy
 500/du

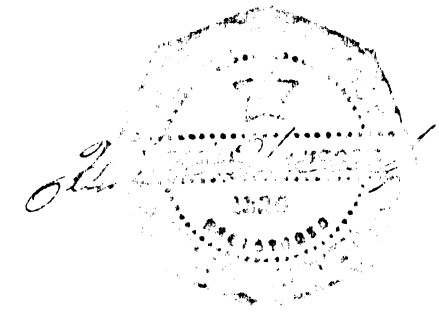


STATE OF TEXAS
 COUNTY OF PARKER
 I hereby certify that this instrument was
 filed on the date and time stamped here-
 on by me and was duly recorded on the
 1st day of March, A.D., 1976, in
 Vol. 360 page 2 of the Plat
 records of Parker, Texas



J. H. "Tommy" McDaniel
 County Clerk, Parker
 County, Texas

THIS CERTIFIES THIS PLAT IS A TRUE AND
 CORRECT REPRESENTATION OF AN ACTUAL
 SURVEY MADE ON THE GROUND UNDER MY
 SUPERVISION. AN IRON PIN WAS PLACED AT
 EACH PROPERTY CORNER. DATE: 2-17-76



WENDELL HANCOCK
 REGISTERED PUBLIC SURVEYOR #1326
 1721 HAMILTON BLVD.
 FORT WORTH, TEXAS 76117
 634-6243