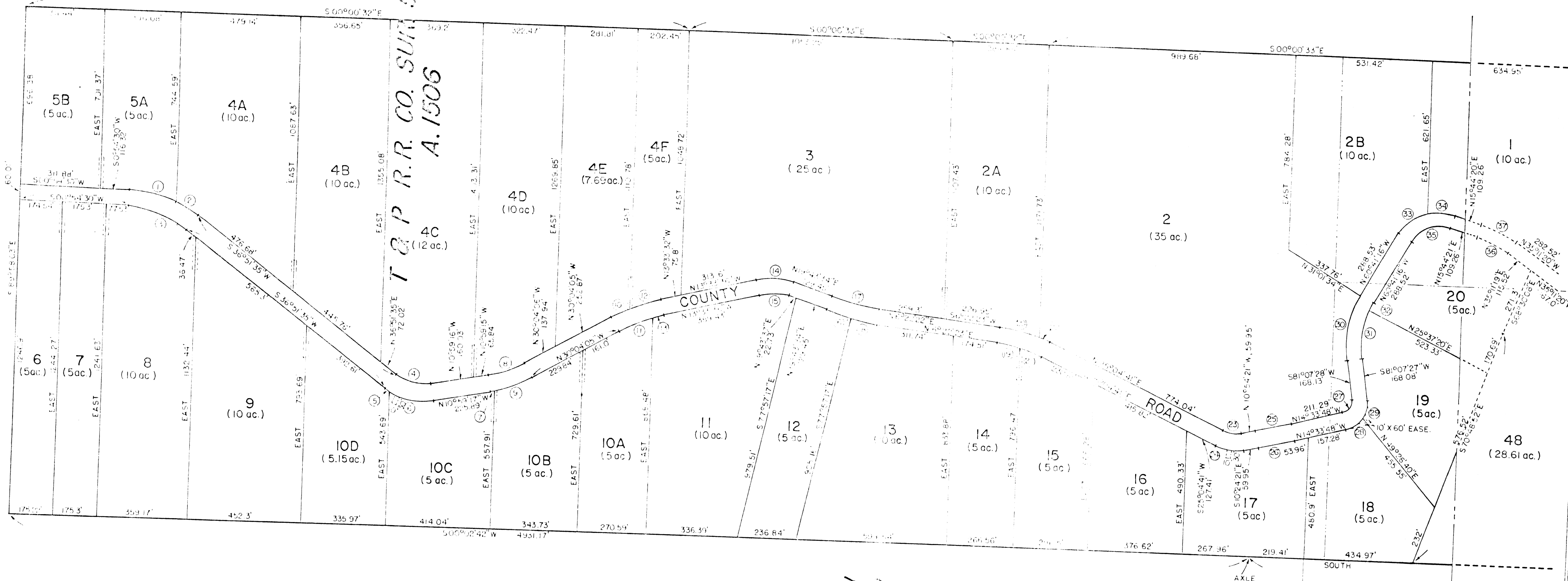


SCALE: 1" = 300'

T & P R.R. CO. SURV. 5 BLK. 1
A. 1506



CURVE DATA				CURVE DATA			
NO.	R	CH. BRG. & LGTH.	LGTH.	NO.	R	CH BRG & LGTH.	LGTH.
1	432.32	S12°17'04"W, 194.21'	195.5'	21	577.17		93.43'
2	492.32	N30°45'37"E, 113.16'	113.42'	22	637.18	N13°43'32"E, 207.09'	208.01'
3	432.32	S18°53'02"W, 266.84'	271.27'	23	123.96	N7°05'13"E, 76.53'	77.85'
4	195.41	N12°56'10"E, 158.49'	163.19'	24	183.96	S7°05'08"W, 113.64'	115.53'
5	295.41	E33°54'25"E, 26.32'	26.33'	25	2318.99	N12°44'09"W, 148.0'	148.00'
6	295.41	N9°58'59"E, 182.62'	186.97'	26	2379.99	S12°44'01"E, 151.84'	151.86'
7	505.02	N11°41'44"W, 12.5'	12.5'	27	47.32	N53°43'10"W, 63.52'	69.65'
8	446.02	N20°31'42"W, 147.84'	148.53'	28	107.32	N35°38'05"W, 77.16'	78.95'
9	506.02	N21°14'02"W, 155.39'	156.0'	29	107.32	N77°46'46"W, 77.19'	78.96'
10	719.35	N27°14'42"W, 70.83'	70.86'	30	391.1'	N79°46'54"W, 255.67'	260.67'
11	659.35	N23°49'17"W, 143.49'	143.77'	31	331.1'	N82°42'33"W, 184.46'	186.93'
12	719.35	N18°59'28"W, 156.19'	156.4'	32	331.1'	N63°46'43"W, 33.78'	33.81'
13	659.35	N12°24'00"W, 46.19'	46.2'	33	188.77	N40°13'53"W, 131.94'	134.79'
14	260.89	N3°04'57"E, 160.9'	165.19'	34	188.77	N2°01'10"W, 115.15'	117.01'
15	200.89	N3°05'07"E, 126.53'	128.33'	35	126.77	N22°23'27"W, 159.31'	171.77'
16	864.28	N16°21'56"E, 103.67'	103.73'	36	40.763	N25°27'50"E, 137.71'	134.77'
17	824.28	N13°02'57"E, 191.67'	192.1'	37	467.63	N25°27'51"E, 157.84'	164.3'
18	184.28	N9°41'20"E, 102.29'	102.35'				
19	577.17	S11°05'18"W, 94.85'	95.0'				
20	637.18	S12°46'09"W, 104.04'	104.3'				

88064
RECEIVED AND FILED
FOR RECORD
At 2:50 o'clock P.M.
DEC 28 1977
CARRIE REED, Co. Clerk
PARKER COUNTY, TEXAS
By: J.M. Deputy
1000 Rev

M. B. ROACH
DUNK A. BOOR

NOTE: UTILITY EASEMENTS TO BE 5' OFF LOT LINE
UNLESS LONG EXCEPT OTHERWISE INDICATED.

I HEREBY CERTIFY THAT THIS INSTRUMENT WAS
FILED ON THE DATE AND TIME STAMPED
HEREON BY ME AND WAS DULY RECORDED ON THE
28 DAY OF DEC. A.D. 1977, IN
VOLUME PAGE 18, OF THE
RECORDS OF PARKER COUNTY, TEXAS.



Carrie Reed
County Clerk, Parker
County, Texas



HUGHES AND ASSOCIATES
LAND SURVEYING
CIVIL ENGINEERING
LAND PLANNING
131 W. CHURCH STREET - WEATHERFORD, TEXAS
OFFICE 594-5374 HOME 594-2165

I certify that this map was prepared from field notes of an actual survey made by me or under my supervision and to the best of my knowledge and belief represents said survey.

Date: Dec 28 1977 No. _____

SHEET 1 OF 3

PCA 275

PCA 275