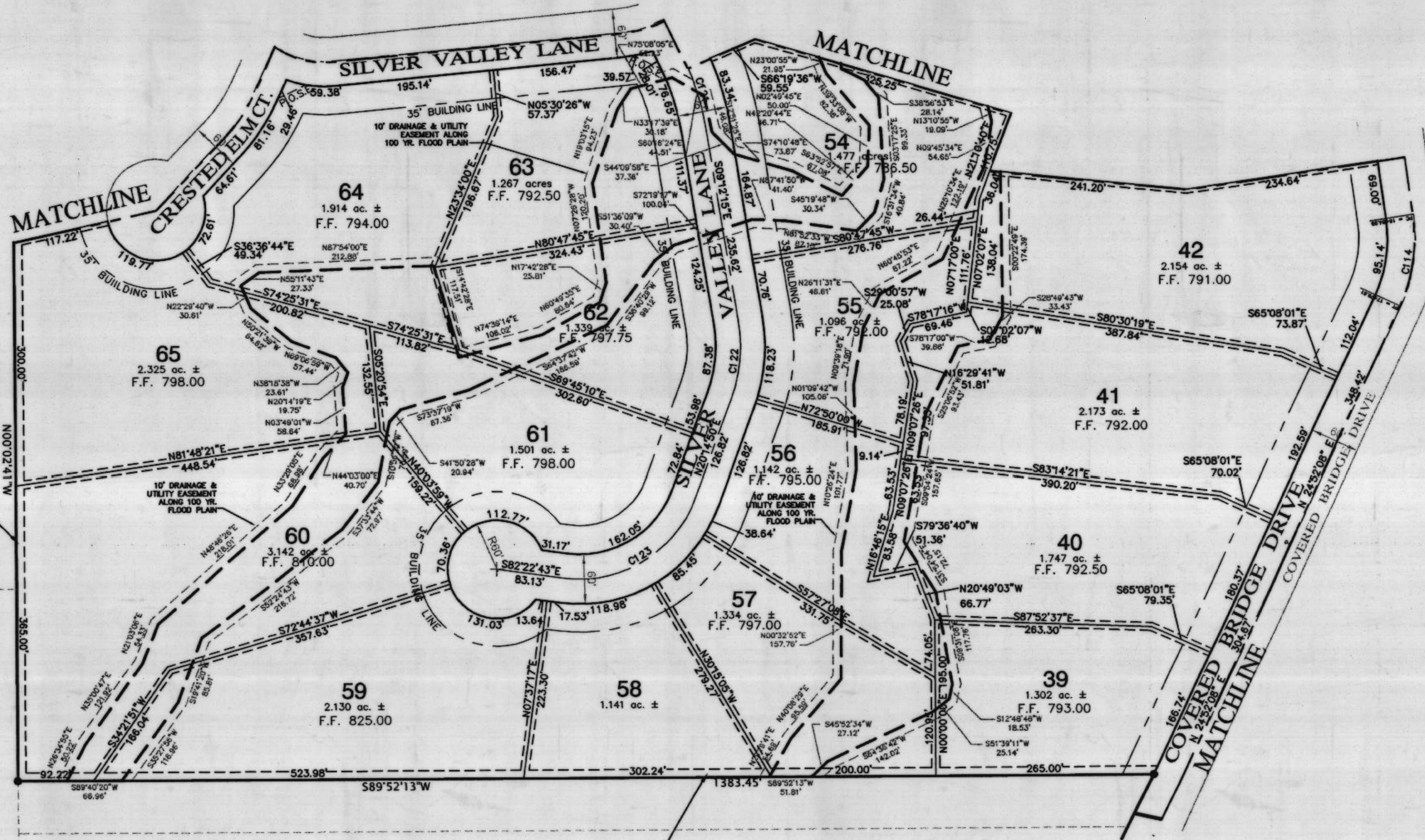


PUBLIC OPEN SPACE EASEMENT (P.O.S.E.) TYPICAL AT ALL STREET INTERSECTIONS



Doc 00466911 Bk OR Vol 2068 Pg 1883

FILED AND RECORDED OFFICIAL PUBLIC RECORDS On: Jan 03, 2003 at 11:58A

Document Number: 00466911

Amount: \$5.00

By: Leam Franklin

STATE OF TEXAS COUNTY OF PARKER I hereby certify that this instrument was filed on the date and time stamped herein by me and was duly recorded in the volume and page of the named records of Parker County as stamped herein by me.

Jan 03, 2003

JENNIFER BRUNSON, COUNTY CLERK PARKER COUNTY

PCB 765



BARNETT ENGINEERING INC. CONSULTING ENGINEERS - PLANNERS - DESIGNERS  
P.O. BOX 2230 WEATHERFORD, TX 76086 (817) 599-4278 (817) 341-4242 METRO (817) 599-4279 FAX www.barnettengineering.com

OWNERS: CENTRAL PARK INVESTMENTS 6000 WESTERN PLACE II, STE. 465 FORT WORTH, TEXAS 76116 (817) 377-8827

SURVEYOR: DAVID HARLAN HARLAN LAND SURVEYING, INC. 215 EUREKA STREET FORT WORTH, TEXAS 76086 (817) 596-9700

FINAL PLAT OF PHASE III COVERED BRIDGE CANYON BLOCK D, LOTS 1-91 T & P R R COMPANY SURVEY NO. 5 ABSTRACT NO. 1506 PARKER COUNTY, TEXAS JULY 24, 2002

S:\Land Projects R2\Covered Bridge 3\dwg\265-Final Plat-S4.dwg, Layout1, 12/04/2002 10:43:27 AM, ryan