

DOVE HILL, INC.
BOOK 1808, PAGES 2123
R.R.P.C.T.

THESE ELECTRIC LINES ARE SUBJECT TO ANY EXISTING EASEMENTS AND/OR RIGHT-OF-WAYS THAT MAY EXIST AND THAT MAY BE FILED OF RECORD.

DOE: Bk Vol
40826000 DR 2243 4579

FILED AND RECORDED
OFFICE OF THE COUNTY CLERK
ON Aug 05, 2004 AT 10:29 AM

Devised Author: M66253

ASAP

By: DAVID HARLAN

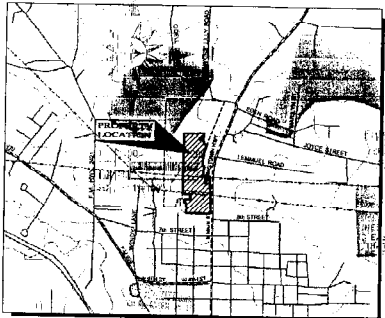
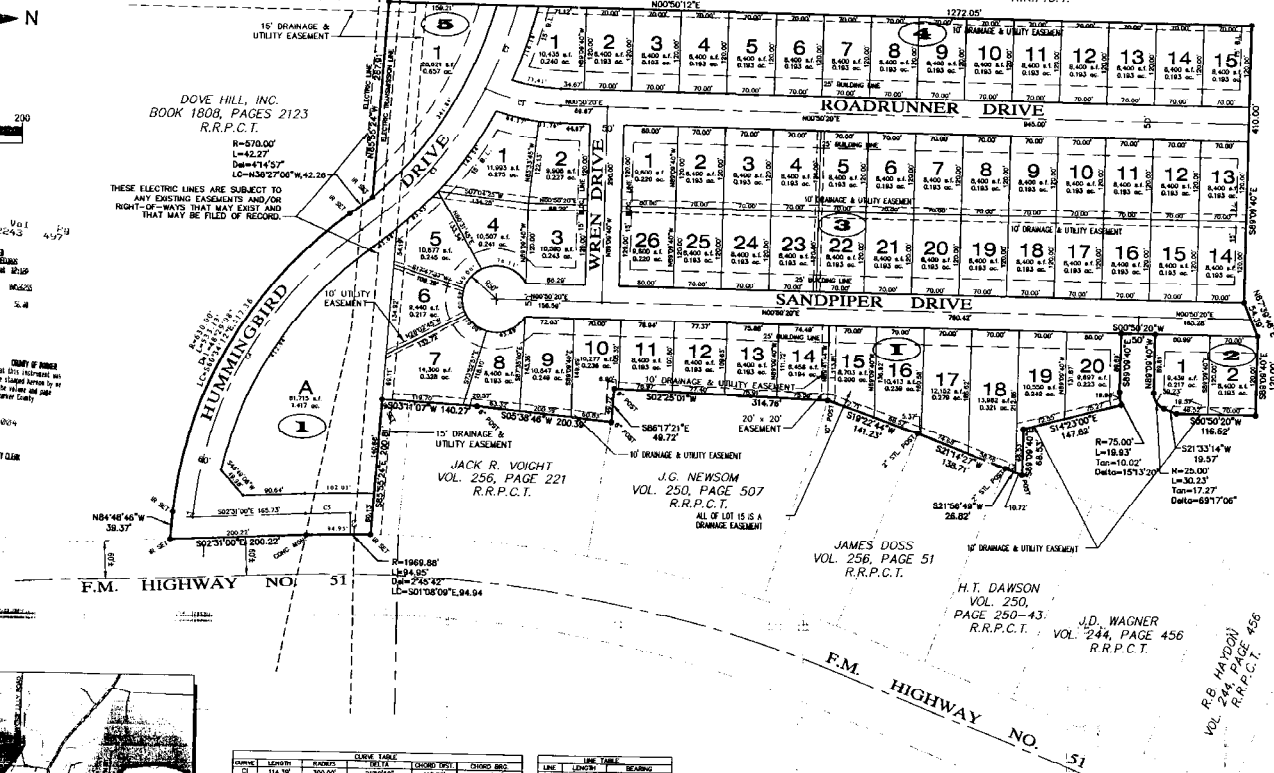
STATE OF TEXAS COUNTY OF PARKER
I, David Harlan, Surveyor, do hereby certify that this instrument was filed on the day and date stated herein by me and was duly recorded in the volume and page of the said records of Parker County as stated herein to be.

Aug 05, 2004

PARKER COUNTY CLERK
PARKER COUNTY

C-163

DOVE HILL, INC.
BOOK 1808, PAGES 2123-2127
R.R.P.C.T.



LOCATION MAP
SCALE: 1"=200'

LINE	LENGTH	BEARING	CHORD BEARING	CHORD DIST.
1	118.49	S 89° 00' 00" W	S 89° 00' 00" W	118.49
2	131.49	S 89° 00' 00" W	S 89° 00' 00" W	131.49
3	144.49	S 89° 00' 00" W	S 89° 00' 00" W	144.49
4	157.49	S 89° 00' 00" W	S 89° 00' 00" W	157.49
5	170.49	S 89° 00' 00" W	S 89° 00' 00" W	170.49
6	183.49	S 89° 00' 00" W	S 89° 00' 00" W	183.49
7	196.49	S 89° 00' 00" W	S 89° 00' 00" W	196.49
8	209.49	S 89° 00' 00" W	S 89° 00' 00" W	209.49
9	222.49	S 89° 00' 00" W	S 89° 00' 00" W	222.49
10	235.49	S 89° 00' 00" W	S 89° 00' 00" W	235.49
11	248.49	S 89° 00' 00" W	S 89° 00' 00" W	248.49
12	261.49	S 89° 00' 00" W	S 89° 00' 00" W	261.49
13	274.49	S 89° 00' 00" W	S 89° 00' 00" W	274.49
14	287.49	S 89° 00' 00" W	S 89° 00' 00" W	287.49
15	300.49	S 89° 00' 00" W	S 89° 00' 00" W	300.49
16	313.49	S 89° 00' 00" W	S 89° 00' 00" W	313.49
17	326.49	S 89° 00' 00" W	S 89° 00' 00" W	326.49
18	339.49	S 89° 00' 00" W	S 89° 00' 00" W	339.49
19	352.49	S 89° 00' 00" W	S 89° 00' 00" W	352.49
20	365.49	S 89° 00' 00" W	S 89° 00' 00" W	365.49
21	378.49	S 89° 00' 00" W	S 89° 00' 00" W	378.49
22	391.49	S 89° 00' 00" W	S 89° 00' 00" W	391.49
23	404.49	S 89° 00' 00" W	S 89° 00' 00" W	404.49
24	417.49	S 89° 00' 00" W	S 89° 00' 00" W	417.49
25	430.49	S 89° 00' 00" W	S 89° 00' 00" W	430.49
26	443.49	S 89° 00' 00" W	S 89° 00' 00" W	443.49

OWNER:
DOVE HILL, INC.
4085 EAST I-20
WILLOW PARK, TEXAS 76067
817-341-0112

SURVEYOR:
DAVID HARLAN
HARLAN LAND SURVEYING, INC.
215 EAST EUREKA
WEATHERFORD, TEXAS 76066
817-595-6700

BARNETT
ENGINEERING INC.
P.O. BOX 2220
WEATHERFORD, TX 76086
(817) 595-4216
(817) 341-4242 ME TRD
(817) 595-4218 FAX
www.barnettengineering.com

ACCT. NO.: 118116
SCH. DIST.: V.C.
CITY: V.C.
MAP NO.: H-116

AMENDED
FINAL PLAT
OF
DOVE HILL ADDITION
REPLAT OF LOTS 1, 2 & 3, BLOCK 1, CAUSEY ADDITION
TO THE CITY OF WEATHERFORD
LOTS 1-20, A, BLOCK 1; LOTS 1-2, BLOCK 2; LOTS 1-26, BLOCK 3
LOTS 1-15, BLOCK 4; LOT 1, BLOCK 5
T. & P. R.R. COMPANY SURVEY, SECTION 141, A-1447
PART OF THE CAUSEY ADDITION
CITY OF WEATHERFORD
PARKER COUNTY, TEXAS
JULY, 2004