

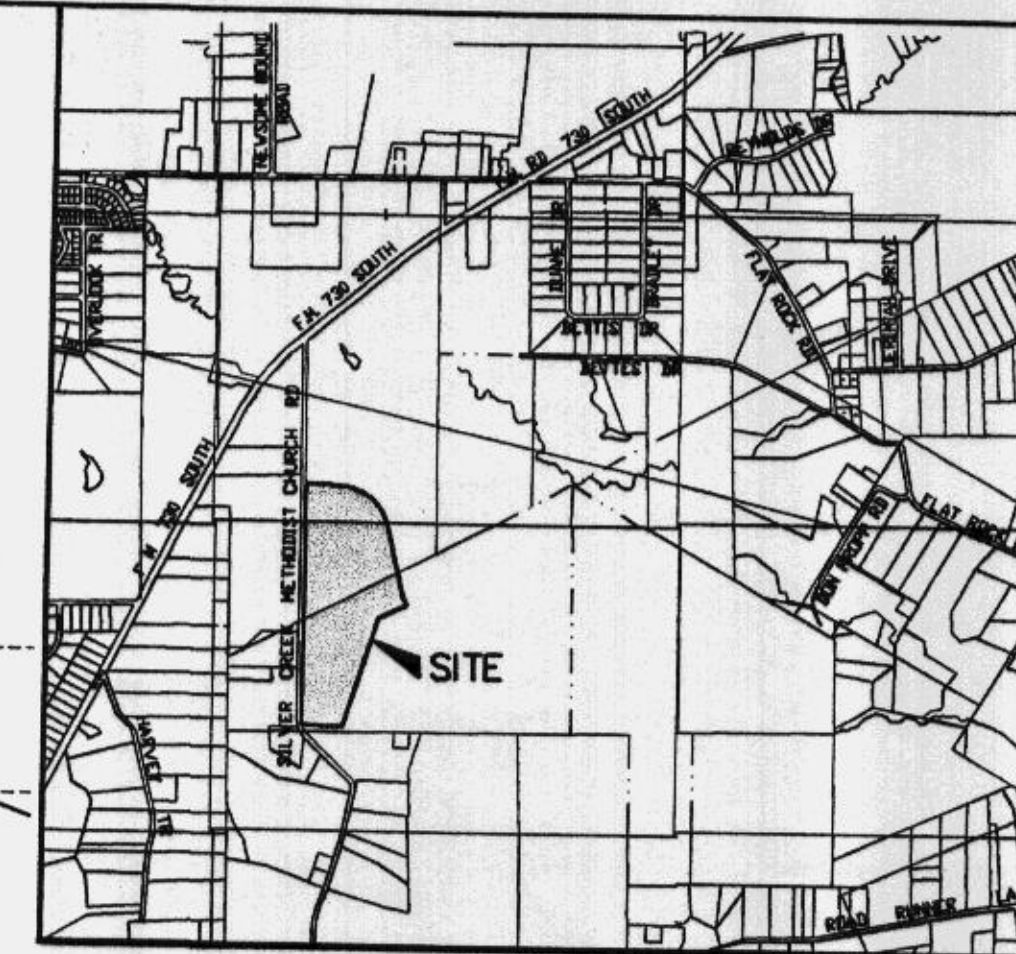
C-15

DERALD LYNN COOMER
VOLUME 626, PAGE 698

WILLIAM ELLIOTT SURVEY
ABSTRACT NO. 2383

DEER RIDGE ESTATES
CABINET B, SLIDE 727

EXIST. 150' TESCO ESMT.
VOL. 1089, PG. 1227



VICINITY MAP

Doc 00482859 Bk OR 2115 Vol 1240 Pg

FILED AND RETURNED
OFFICIAL PUBLIC RECORDS
On Jun 11, 2003 at 09:40

Document Number: 00482859

Amount \$5.00

By Sherry Jackson

STATE OF TEXAS COUNTY OF PARKER
I hereby certify that this instrument was
filed on the date and time stamped herein by me
and was duly recorded in the volume and page
of the named records of Parker County
as stamped herein by me.

Jun 11, 2003

Jeanne Brunson, County Clerk
Parker County

ENGINEER:

DUNAWAY ASSOCIATES, INC.
1501 MERRIMAC CIRCLE #100
FT. WORTH, TEXAS 76107
(817) 335-1121

SURVEYOR:

MIZELL LAND SURVEYING, INC.
117 JOHN STREET
P.O. BOX 1029
ALEDO, TEXAS 76008
(817) 441-6199

OWNER/DEVELOPER:

MILL STREAM COMPANY
1525 MERRIMAC CIRCLE SUITE 220
FORT WORTH, TEXAS 76107
(817) 336-6606

PARKER 1102 HOLDINGS LTD.
VOLUME 1877, PAGE 942
VOLUME 1877, PAGE 924

ACCT. NO.: 11774
SCH. DIST.: AZ
CITY: CO
MAP NO.: N-10

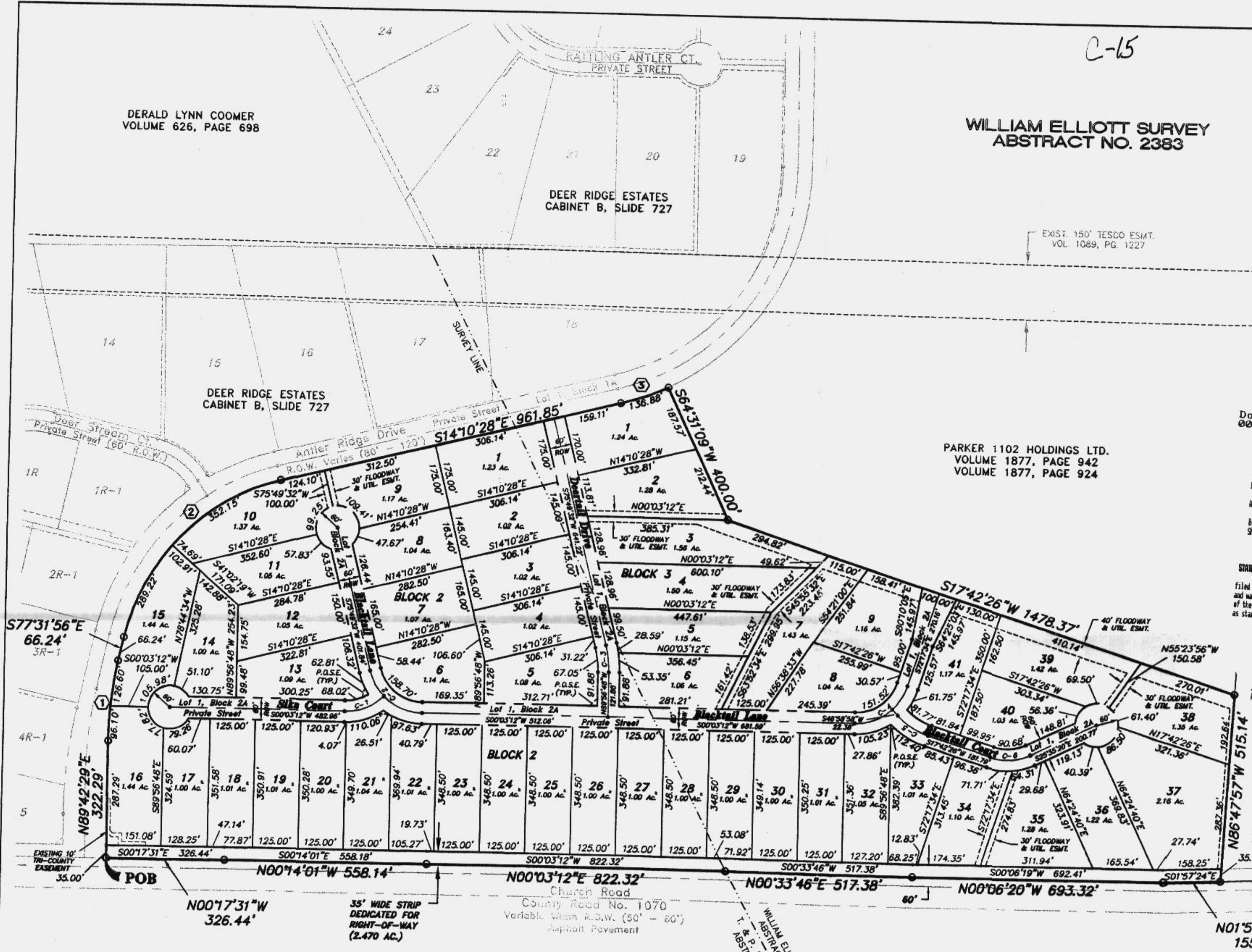
**A FINAL PLAT OF
LOTS 1 THRU 41, BLOCK 2
LOTS 1 THRU 9, BLOCK 3
AND
LOT 1, BLOCK 2A
DEER RIDGE ESTATES**

AN ADDITION TO PARKER COUNTY, TEXAS, BEING SITUATED IN THE
T. & P. RR. CO. SURVEY, ABSTRACT NO. 1422, AND THE W. ELLIOTT SURVEY,
ABSTRACT NO. 2383, PARKER COUNTY, TEXAS.

51 LOTS 66.292 ACRES

THIS PLAT WAS PREPARED IN APRIL, 2003

THIS PLAT FILED IN CABINET __, SLIDE NO. __



T. & P. RR. CO. SURVEY
ABSTRACT NO. 1422

CENTERLINE CURVE DATA

BOUNDARY DATA

C-1 Δ = 45°18'32" R = 150.00' T = 62.61' L = 118.62' L.C. = 115.55' S 22°36'04" E	C-2 Δ = 75°46'20" R = 150.00' T = 116.71' L = 198.37' L.C. = 184.23' S 37°56'22" W	C-3 Δ = 14°13'40" R = 300.00' T = 37.44' L = 74.50' L.C. = 74.30' S 82°56'22" W
C-4 Δ = 72°20'46" R = 150.00' T = 109.68' L = 189.40' L.C. = 177.07' S 36°07'11" E	C-5 Δ = 29°16'32" R = 200.00' T = 52.24' L = 102.19' L.C. = 101.08' S 32°20'42" W	C-6 Δ = 43°17'46" R = 150.00' T = 59.53' L = 113.35' L.C. = 110.67' S 03°56'27" E

① Δ = 12°45'35" R = 1000.00' T = 111.81' L = 222.70' L.C. = 222.24' S 83°54'43" E	② Δ = 63°21'28" R = 580.00' T = 357.92' L = 641.37' L.C. = 609.18' S 45°51'12" E	③ Δ = 11°32'00" R = 680.00' T = 68.67' L = 136.88' L.C. = 136.65' S 19°56'28" E
--	---	--

