

A473

REPLAT OF DIAMOND OAKS SUBDIVISION

FIELD NOTES

FIELD NOTES of a 23.11 Acre tract of land, being a part of the J. C. Rider Survey, Abstract 2503, the W. W. Johnson Survey, Abstract 2893 and the T & P R.R. Company Survey, Block 3, Abstract 1513, Parker County, Texas and being more fully described by metes and bounds as follows:

BEGINNING at a steel rod, said point being South 705.2 ft. and S 89 deg. 57 min. E, 1069.89 ft. from the SW corner of the J. C. Rider Survey, Abstract 2503; THENCE S 89 deg. 57 min. E, 234.83 ft. to a steel rod, in the WBL of Diamond Oaks Drive for a corner; THENCE North, with the WBL of the above mentioned Diamond Oaks Drive, 639.97 ft. to a steel rod for a corner; THENCE N 89 deg. 57 min. W, 234.83 ft. to a steel rod for a corner; THENCE North 1039.62 ft. to a steelrod, in the SBL of Dorris Drive, for a corner; THENCE S 66 deg. 58 min. 44 sec. E, with the SBL of the above mentioned Dorris Drive, 89.52 ft. to the PC of a Curve to the Left, said Curve having the following data: Radius 296.52 ft., Chord S 77 deg. 36 min. 16 sec. E, 109.35 ft.; THENCE, with the SBL of the above mentioned Dorris Drive and with said Curve to the Left, a distance of 109.98 ft. to the PT of said Curve; THENCE S 88 deg. 13 min. 47 sec. E, with the SBL of said Dorris Drive, 319.96 ft. to the PC of a Curve to the Right, said Curve having the following data: Radius 206.29 ft., Chord S 25 deg. 20 min. 54 sec. E, 20.74 ft.; THENCE, with the SBL of the above mentioned Dorris Drive and with said Curve to the Right, a distance of 20.75 ft. to a steel rod for a corner; THENCE South 963.53 ft. to a steel rod for a corner; THENCE N 89 deg. 57 min. W, 234.83 ft. to a steel rod, in the EBL of the above mentioned Diamond Oaks Drive, for a corner; THENCE South, with the EBL of the above mentioned Diamond Oaks Drive, 1090.0 ft. to a steel rod for a corner; THENCE S 89 deg. 57 min. E, 234.83 ft. to a steel rod for a corner; THENCE South 201.28 ft. to a steel rod for a corner; THENCE West 35.99 ft. to a steel rod for a corner; THENCE South 588.99 ft. to a steel rod for a corner; THENCE N 89 deg. 57 min. W, 532.56 ft. to a steel rod for a corner; THENCE North 588.52 ft. to a steel rod, in the SBL of the above mentioned Diamond Oaks Drive, for a corner; THENCE East, with the SBL of said Diamond Oaks Drive, 128.80 ft. to the PC of a Curve to the Left, said Curve having the following data: Radius 144.85 ft., Chord N 67 deg. 30 min. E, 110.87 ft.; THENCE, with the SBL of the above mentioned Diamond Oaks Drive and with said Curve to the Left, a distance of 113.77 ft. to the PCC of another Curve to the Left, said Curve having the following data: Radius 145.03 ft., Chord N 22 deg. 30 min. E, 111.0 ft.; THENCE, with the WBL of said Diamond Oaks Drive and with said Curve to the Left, a distance of 113.91 ft. to the PT of said Curve; THENCE North, with the WBL of said Diamond Oaks Drive, 314.58 ft. to a steel rod for a corner; THENCE West 234.83 ft. to a steel rod for a corner; THENCE North 185.49 ft. to the place of beginning and containing 23.11 Acres of land, more or less.

REPLAT OF DIAMOND OAKS SUBDIVISION BEING A PART OF THE J. C. RIDER SUR. AB. - 2503, W. W. JOHNSON SUR. AB. - 2893 AND THE T & P R.R. CO. SUR. BLK. - 3 AB. - 1513. PARKER COUNTY, TEXAS.

104499 A-473

RECEIVED AND FILED FOR RECORD At 9:20 O'Clock a.m.

MAY 22 1985

CARRIE REED, Co. Clerk PARKER COUNTY, TEXAS

By [Signature] Deputy 10.00 pd

Vol 363 A page 26

STATE OF TEXAS COUNTY OF PARKER I hereby certify that this instrument was filed on the date and time stamped hereon by me and was duly recorded in the volume and page of the named records of Parker County as stamped hereon by me.

RECORDED MAY 22 1985

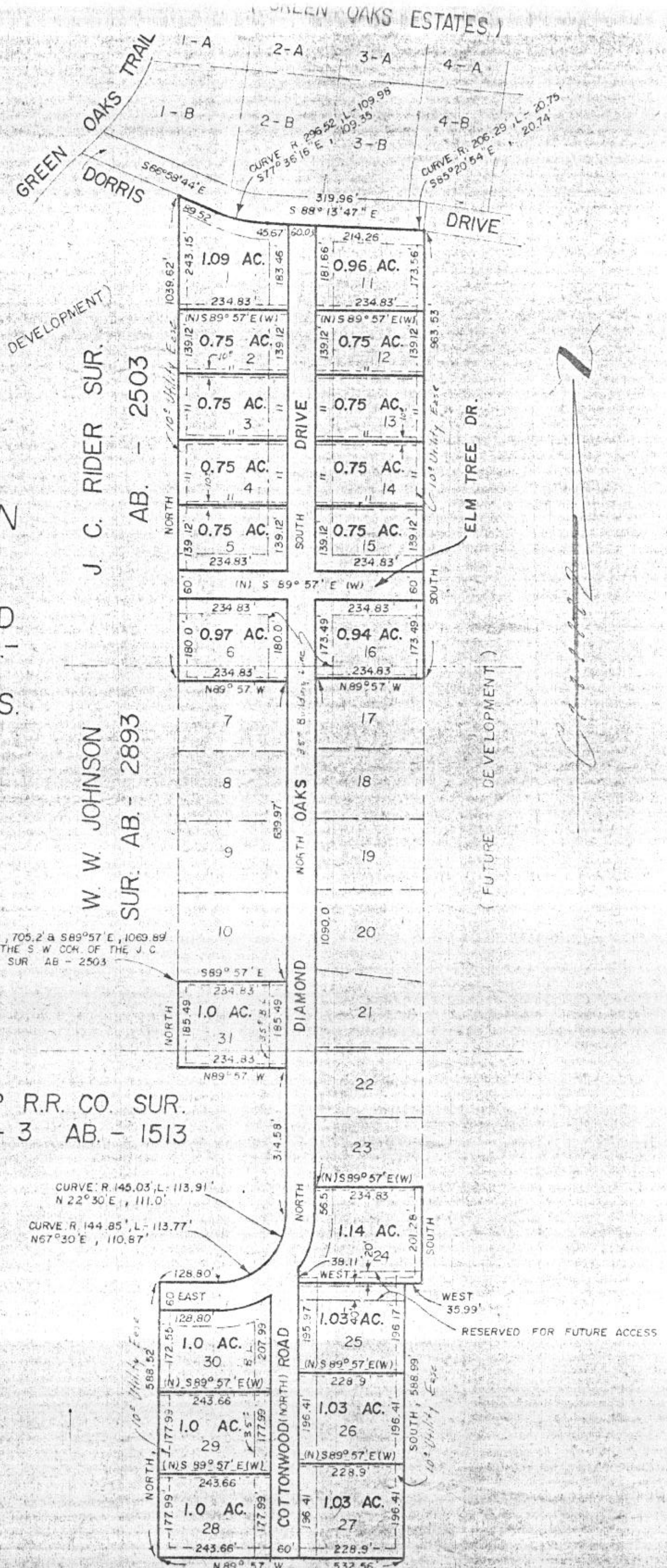
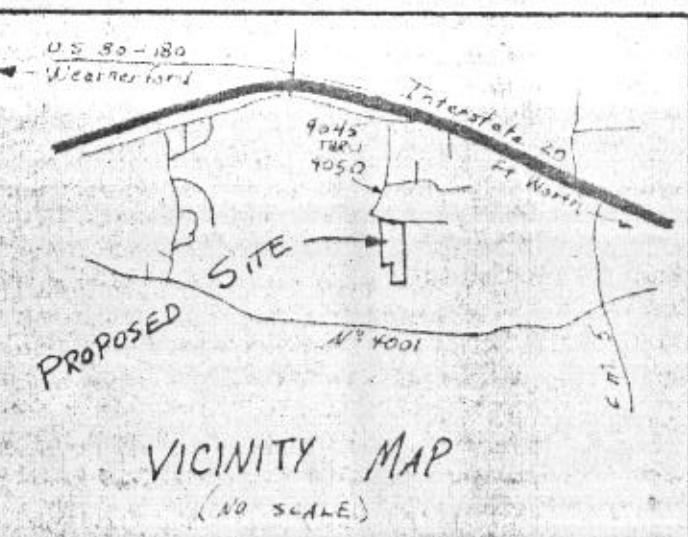


Carrie Reed County Clerk, Parker County, Tex.

T. & P. R.R. CO. SUR. BLK. - 3 AB. - 1513

SOUTH 705.2' a S 89° 57' E, 1069.89' FROM THE S.W. COR. OF THE J. C. RIDER SUR. AB. - 2503

CURVE R 145.03', L. 113.91' N 22° 30' E, 111.0' CURVE R 144.85', L. 113.77' N 67° 30' E, 110.87'



SCALE 1/4" = 200' LEGEND: O IRON PIPE, ⊙ STEEL ROD, ⊗ FENCE CORNER, * FENCE

HUGHES AND ASSOCIATES LAND SURVEYING CIVIL ENGINEERING LAND PLANNING



111 E. COLUMBIA, SUITE E WEATHERFORD, TEXAS OFFICE 594-2774 OR 441-7619 HOME 594-2185

I certify that this map was prepared from field notes of an actual survey made by me or under my supervision and to the best of my knowledge and belief represents said survey.

Date 4/85 (SHEET 1 of 2)