

FIELD NOTES

FIELD NOTES OF A 17.368 Ac. Tract Of Land, Being A Part Of The A. B. SMITH Survey, Abst. 1223, In Parker County, Texas & Being More Fully Described By Metes & Bounds As Follows;

BEGINNING AT A Point Being 1626.28 Ft. North & 277.3 Ft. East Of The North West Corner Of The C.M. CARR Survey; THENCE N 31° 43' 06" E - 154.82 Ft. To A Point For A Corner; THENCE N 25° 07' 59" E - 87.87 Ft. To A Point For A Corner; THENCE N 40° 58' 00" E - 69.72 Ft. To A Point For A Corner; THENCE N 24° 37' 00" E - 77.93 Ft. To A Point For A Corner; THENCE N 5° 12' 00" E - 122.45 Ft. To A Point For A Corner; THENCE N 40° 31' 47" W - 88.32 Ft. To A Point For A Corner; THENCE N 30° 02' 00" E - 484.64 Ft. To A Point For A Corner; THENCE S 74° 23' 09" E - 117.21 Ft. To A Point For A Corner; THENCE S 78° 47' 18" E - 60.00 Ft. To A Point For A Corner; THENCE N 11° 12' 42" E - 113.09 Ft. To The P.C. Of A Curve To The Right; THENCE With The Above Mentioned Curve To The Right 2.45 Ft. To A Point For A Corner; THENCE East 391.27 Ft. To A Point For A Corner; THENCE S 0° 06' 00" W - 1004.12 Ft. To A Point For A Corner; THENCE S 89° 45' 00" W - 974.86 Ft. To The Place Of Beginning & Containing 17.368 Ac. Of Land, More Or Less.

THE STATE OF TEXAS: COUNTY OF TARRANT:

DEDICATION OF HIDDEN VALLEY ESTATES (Section 2) That HIDDEN VALLEY ESTATES INC., The Owner(s) Of The Above Described Property Do Hereby Adopt The Foregoing Plat For Subdividing The Same To Be Known As HIDDEN VALLEY ESTATES (Section No. 2) An Addition To The City Of Aledo, Parker County, Texas And Do Hereby Dedicate To The Public For Public Use Forever All Streets, Alleys And Easements Shown On Said Plat, Which Plat Has Been Prepared By Tommie Hughes, A Registered Public Land Surveyor And The County Surveyor Of Parker County, Texas.

IN TESTIMONY WHEREOF WITNESS My (Our) Hand(s) This The 4th Day Of April, 1976 A.D. Day Of April, 1976 A.D.

Witnessed and attested by: Jim Howard Johnson, President

THE STATE OF TEXAS: COUNTY OF TARRANT:

BEFORE ME The Undersigned, A Notary Public In And For Said County And State, On This Day Personally Appeared Jim Howard Johnson, President Of HIDDEN VALLEY ESTATES, INC. Known To Me To Be The Person And Officer Whose Name Is Subscribed To The foregoing Instrument And Acknowledged To Me That The Same Was The Act Of Said HIDDEN VALLEY ESTATES, INC., A Corporation, And That He Executed The Same As The Act Of Such Corporation For The Purposes And Consideration Therein Expressed And In The Capacity Therein Stated.

GIVEN UNDER MY HAND AND SEAL OF OFFICE This The 4th Day Of April, 1976 A.D. Day Of April, 1976 A.D.

RECEIVED AND FILED FOR RECORD AT 11:30 O'clock A.M. JUN 14 1976

T. H. "Tommy" McDANIEL, Co. Clerk PARKER COUNTY, TEXAS By: J. N. Deputy 50078

Notary Public In And For Tarrant County, Texas STATE OF TEXAS COUNTY OF PARKER I hereby certify that this instrument was filed on the date and time stamped hereon by me and was duly recorded on the 14th day of June A.D. 1979, in Vol. 200 page 67 of the Plat records of Parker, Texas

HUGHES AND ASSOCIATES LAND SURVEYING CIVIL ENGINEERING LAND PLANNING 131 W. CHURCH STREET WEATHERFORD, TEXAS OFFICE 594-5171 HOME 594-2165

J. H. "Tommy" McDaniel County Clerk, Parker County, Texas

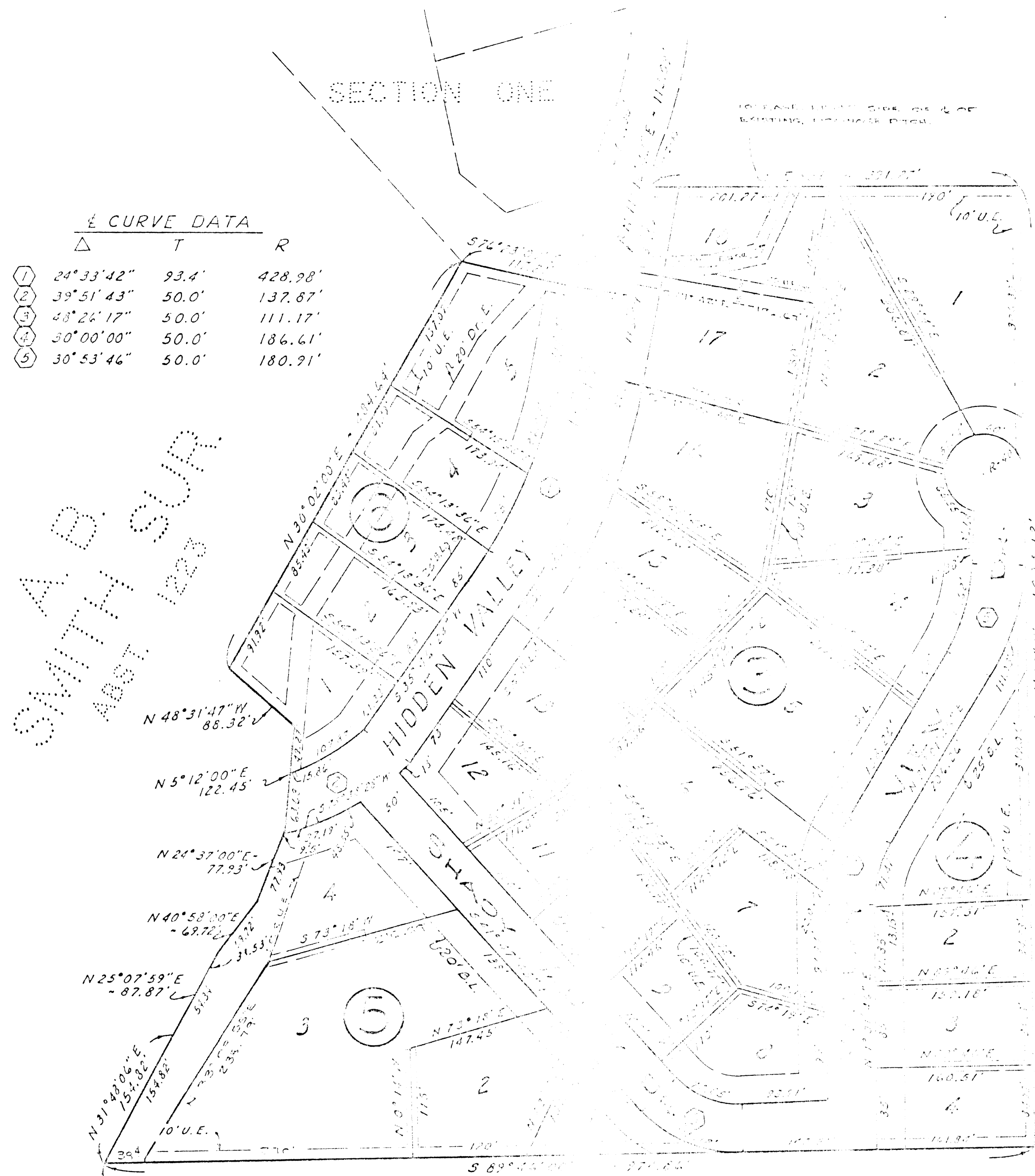


Table with 3 columns: Δ, T, R. It lists curve data for five points, including bearings and distances.

SMITH ABST 1223

PARKER COUNTY Approved - Commissioners Court This 14 Day Of June, 1976 A.D. J. H. "Tommy" McDaniel

HIDDEN VALLEY ESTATES (SECTION NO. 2) An Addition To The City Of Aledo, Parker County, Texas