

STATE OF TEXAS COUNTY OF PARKER
 I hereby certify that this instrument was filed
 on the date and time stamped hereon by me and
 was duly recorded in the volume and page of the
 indexed records of Parker County as stamped here-
 on by me.

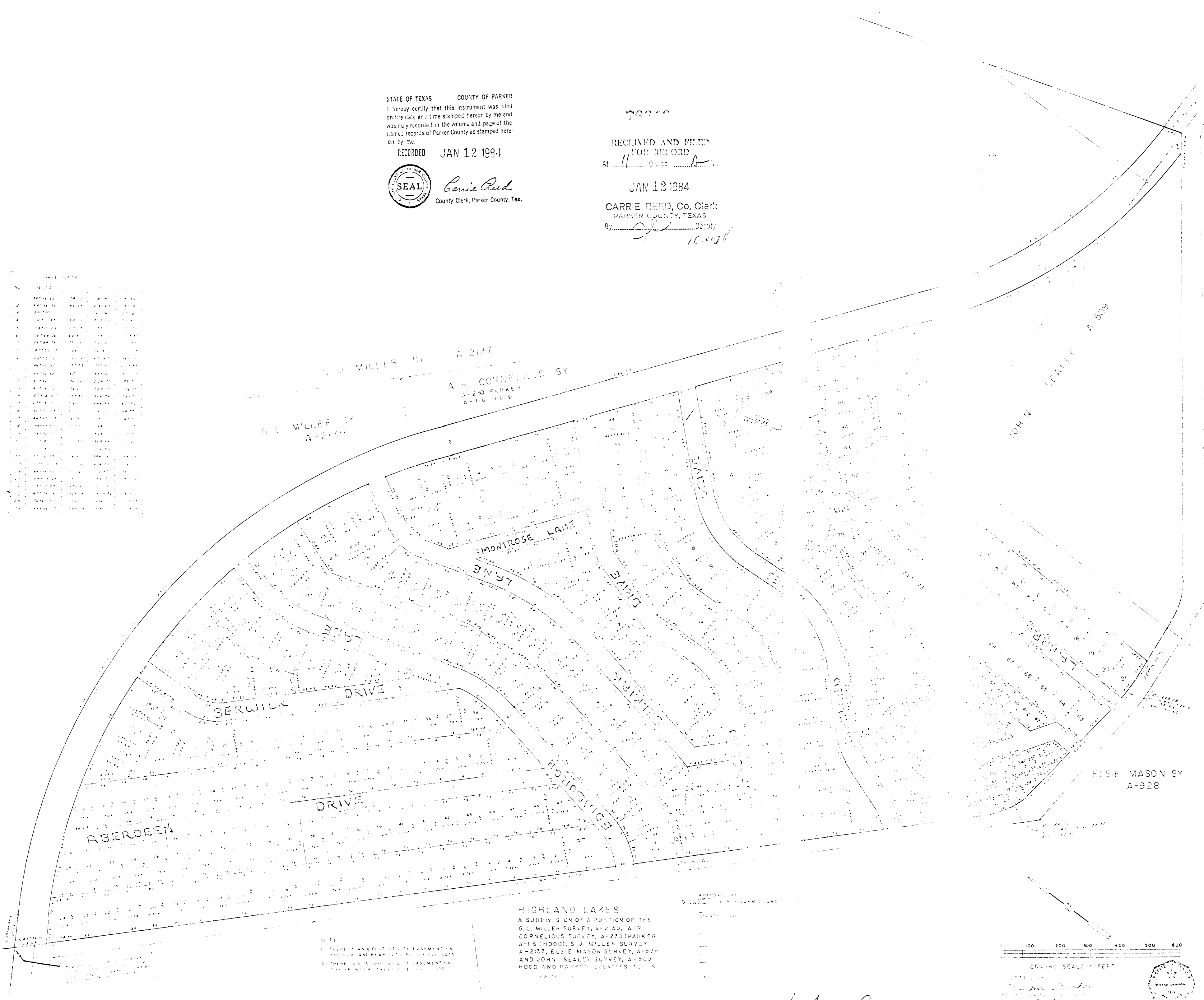
RECORDED JAN 12 1994



Carrie Reed
 County Clerk, Parker County, Tex.

758360
 RECEIVED AND FILED
 FOR RECORD
 At 11 O'clock
 JAN 12 1994
 CARRIE REED, Co. Clerk
 PARKER COUNTY, TEXAS
 By *[Signature]* Deputy
 10-0286

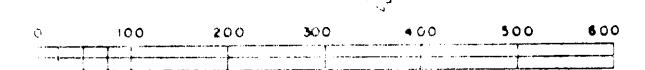
BLK	ACRES	BLK	ACRES
1	1.00	11	1.00
2	1.00	12	1.00
3	1.00	13	1.00
4	1.00	14	1.00
5	1.00	15	1.00
6	1.00	16	1.00
7	1.00	17	1.00
8	1.00	18	1.00
9	1.00	19	1.00
10	1.00	20	1.00
11	1.00	21	1.00
12	1.00	22	1.00
13	1.00	23	1.00
14	1.00	24	1.00
15	1.00	25	1.00
16	1.00	26	1.00
17	1.00	27	1.00
18	1.00	28	1.00
19	1.00	29	1.00
20	1.00	30	1.00
21	1.00	31	1.00
22	1.00	32	1.00
23	1.00	33	1.00
24	1.00	34	1.00
25	1.00	35	1.00
26	1.00	36	1.00
27	1.00	37	1.00
28	1.00	38	1.00
29	1.00	39	1.00
30	1.00	40	1.00
31	1.00	41	1.00
32	1.00	42	1.00
33	1.00	43	1.00
34	1.00	44	1.00
35	1.00	45	1.00
36	1.00	46	1.00
37	1.00	47	1.00
38	1.00	48	1.00
39	1.00	49	1.00
40	1.00	50	1.00
41	1.00	51	1.00
42	1.00	52	1.00
43	1.00	53	1.00
44	1.00	54	1.00
45	1.00	55	1.00
46	1.00	56	1.00
47	1.00	57	1.00
48	1.00	58	1.00
49	1.00	59	1.00
50	1.00	60	1.00
51	1.00	61	1.00
52	1.00	62	1.00
53	1.00	63	1.00
54	1.00	64	1.00
55	1.00	65	1.00
56	1.00	66	1.00
57	1.00	67	1.00
58	1.00	68	1.00
59	1.00	69	1.00
60	1.00	70	1.00
61	1.00	71	1.00
62	1.00	72	1.00
63	1.00	73	1.00
64	1.00	74	1.00
65	1.00	75	1.00
66	1.00	76	1.00
67	1.00	77	1.00
68	1.00	78	1.00
69	1.00	79	1.00
70	1.00	80	1.00
71	1.00	81	1.00
72	1.00	82	1.00
73	1.00	83	1.00
74	1.00	84	1.00
75	1.00	85	1.00
76	1.00	86	1.00
77	1.00	87	1.00
78	1.00	88	1.00
79	1.00	89	1.00
80	1.00	90	1.00
81	1.00	91	1.00
82	1.00	92	1.00
83	1.00	93	1.00
84	1.00	94	1.00
85	1.00	95	1.00
86	1.00	96	1.00
87	1.00	97	1.00
88	1.00	98	1.00
89	1.00	99	1.00
90	1.00	100	1.00



HIGHLAND LAKES
 A SUBDIVISION OF A PORTION OF THE
 G.L. MILLER SURVEY, A-2137, A.R.
 CORNELIUS SURVEY, A-230 (PARKER)
 A-116 (HOOD), S.J. MILLER SURVEY,
 A-217, ELSIE MASON SURVEY, A-928
 AND JOHN SEALEY SURVEY, A-509
 HOOD AND PARKER COUNTIES, TEXAS

NOTE:
 1. THERE IS AN 8 FOOT UTILITY EASEMENT ON
 THE WEST BOUNDARY OF ALL LOTS
 2. THERE IS A 20 FOOT UTILITY EASEMENT ON
 THE WEST BOUNDARY OF LOTS 1-10

APPROVED BY
 GRANTED PLAT COMMISSION



See Record Page