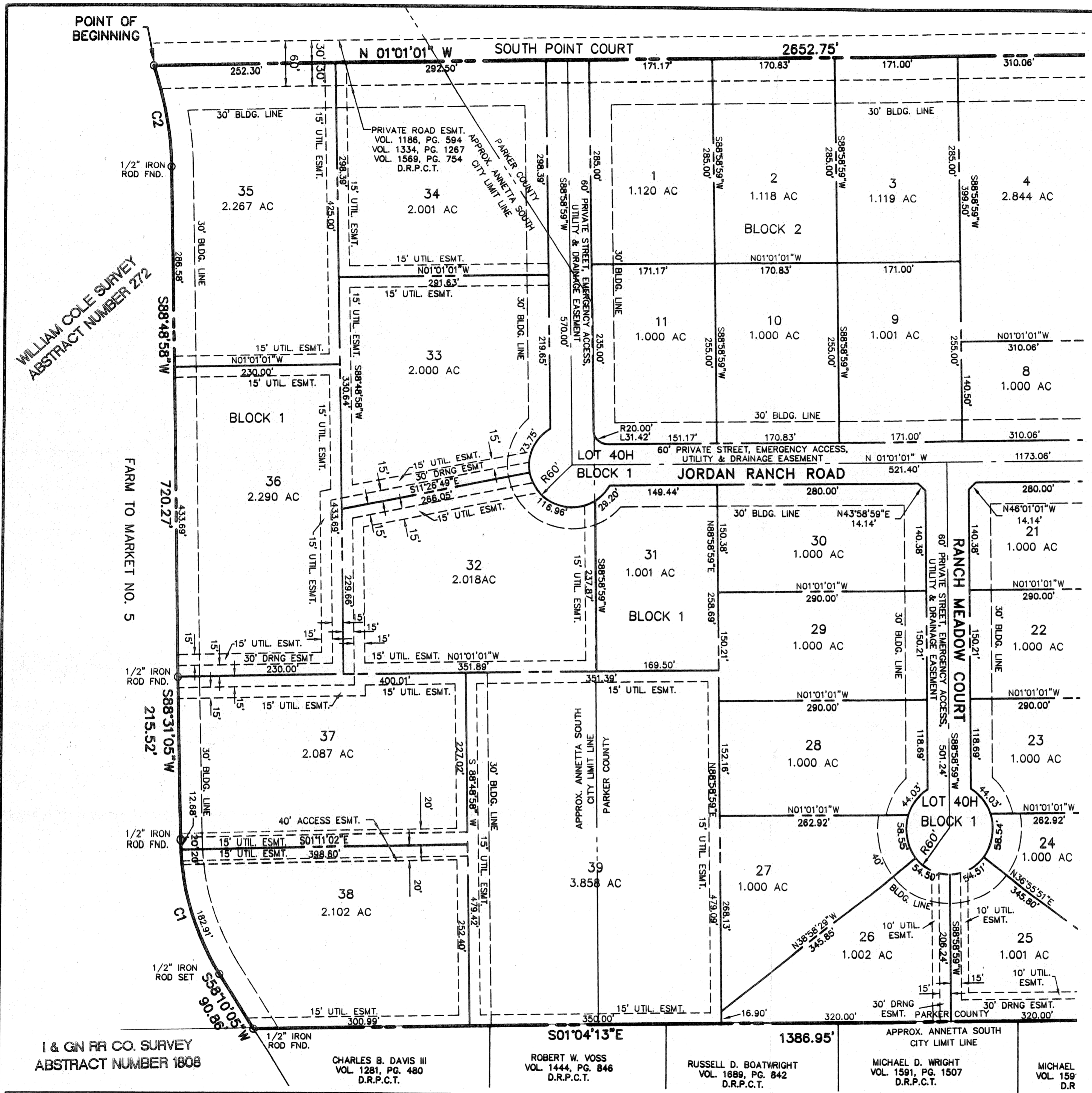
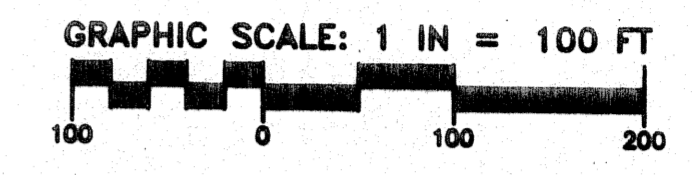
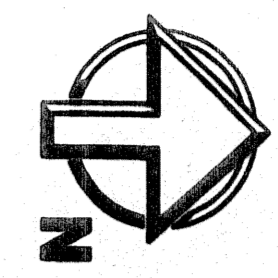


C518



I DO HEREBY CERTIFY THAT THIS PLAT IS TRUE AND CORRECT AS SURVEYED ON THE GROUND.

BY: *Patrick Carter*
 DATE: DECEMBER 7, 2006

ACCT. NO.: 14027
 SCH. DIST.: AL
 CITY: CO
 MAP NO.: L19

FINAL PLAT

LOTS 1-40H, BLOCK 1 & LOTS 1-11, BLOCK 2 JORDAN RANCH

BEING 73.480 ACRES OF LAND SITUATED IN THE WILLIAM COLE SURVEY, ABSTRACT NUMBER 272 & THE I&GN RR CO. SURVEY, ABSTRACT NUMBER 1808 ANNETTA SOUTH, PARKER COUNTY, TEXAS & PARKER COUNTY, TEXAS

PREPARED NOVEMBER 9, 2006

PREPARED BY

SD Engineering, Inc.
 Site Development Engineering

PO Box 1357 Aledo, TX 76008-1357
 (817) 441-6400 Fax (817) 441-6085
 www.sd-engineering.com

SHEET 2 OF 4

I & GN RR CO. SURVEY
 ABSTRACT NUMBER 1808

CHARLES B. DAVIS III
 VOL. 1281, PG. 480
 D.R.P.C.T.

ROBERT W. VOSS
 VOL. 1444, PG. 846
 D.R.P.C.T.

RUSSELL D. BOATWRIGHT
 VOL. 1689, PG. 842
 D.R.P.C.T.

MICHAEL D. WRIGHT
 VOL. 1591, PG. 1507
 D.R.P.C.T.

MICHAEL
 VOL. 159
 D.R.

CURVE TABLE				
CURVE	RADIUS	DELTA	LENGTH	CHORD BRG
C1	369.25	30°21'00"	195.59'	S73°20'35"W
C2	422.00	19°07'58"	140.92'	S79°40'11"W

CM DENOTES MONUMENTS USED FOR BASIS OF BEARING.
 BASIS OF BEARING IS PER THE DEED TO WILLIAM JORDAN
 VOLUME 1176, PAGE 309, VOLUME 1186, PAGE 573, &
 VOLUME 1439, PAGE 939, DEED RECORDS, PARKER CO., TEXAS