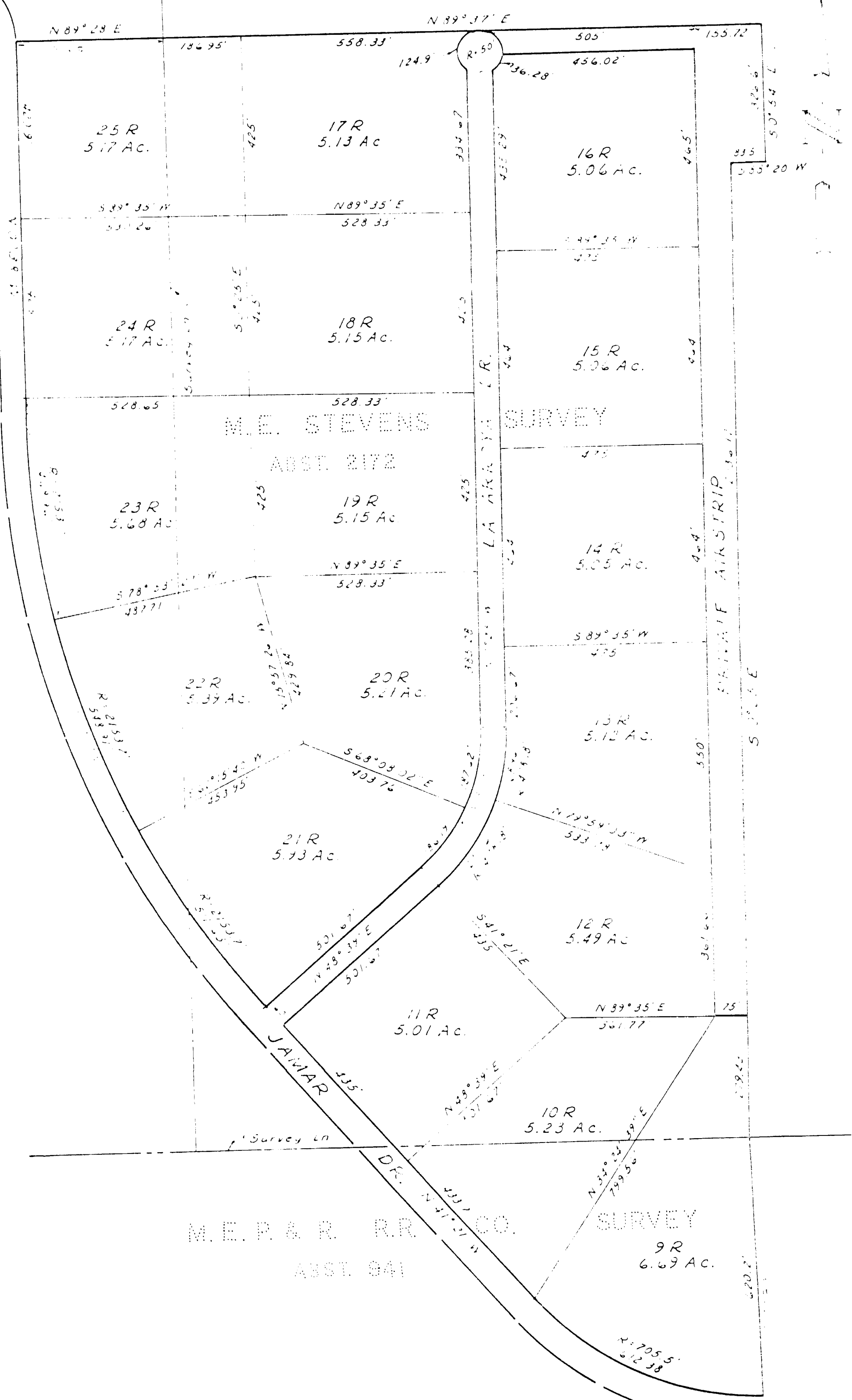


R.W. BARNES SURVEY
ABST. 2005



STATE OF TEXAS
COUNTY OF PARKER

CERTIFICATE

I, the undersigned, County Clerk of Parker County, Texas, do hereby certify that the within and foregoing plat was duly recorded for the Revision of Lots 9R thru 14, Section 1, T. 10 N., R. 20 E., S. 1 E., Parker County, Texas.

Pat Sawyer
John A. Maxwell
Mary Harwell

STATE OF TEXAS
COUNTY OF PARKER

I, the undersigned, County Clerk of Parker County and State, do hereby certify that the within and foregoing plat was duly recorded for the Revision of Lots 9R thru 14, Section 1, T. 10 N., R. 20 E., S. 1 E., Parker County, Texas, and that the same is a true and correct copy of the original instrument as recorded in the public records of the County of Parker, Texas.

Witness my hand and the seal of said County, this 14th day of January, 1974.

Wanda M. Murphy
Bill Wood
Scott Woody CK comb
Chandler Londee Sam M. Penzie

STATE OF TEXAS
COUNTY OF PARKER
I hereby certify that this instrument was filed on the date and time stamped hereon by me and was duly recorded on the 14th day of January, A.D., 1974, in Vol. 366, page 32, of the Public Records of Parker County, Texas.



1 of 4
J. A. Tommy McDaniel
County Clerk, Parker County, Tex

#275-82
A-172
RECEIVED AND FILED FOR RECORD
At 1:30 o'clock P.M.
JAN 14 1974

T. A. "Tommy" McDaniel, Co. Clerk
PARKER COUNTY, TEXAS
By CK Deputy
2-Blue

SCALE 1" = 200'
LEGEND
O IRON PIPE
● STEEL ROD
⊙ FENCE CORNER
-X- FENCE

HUGHES AND ASSOCIATES
LAND SURVEYING
CIVIL ENGINEERING
LAND PLANNING
121 W. CHURCH STREET WEATHERFORD, TEXAS
OFFICE 594-5374 HOME 594-2165

I, Tommy McDaniel, certify that this map was prepared from field notes of an actual survey made by me or under my supervision and to the best of my knowledge and belief represents said survey.

Date Jan 14 1974 No. 4901-E

LOTS 9R THRU 25R, BEING A REVISION OF LOTS 9 THRU 14, SECTION 1, LAGO LINDO, PARKER COUNTY, TEXAS