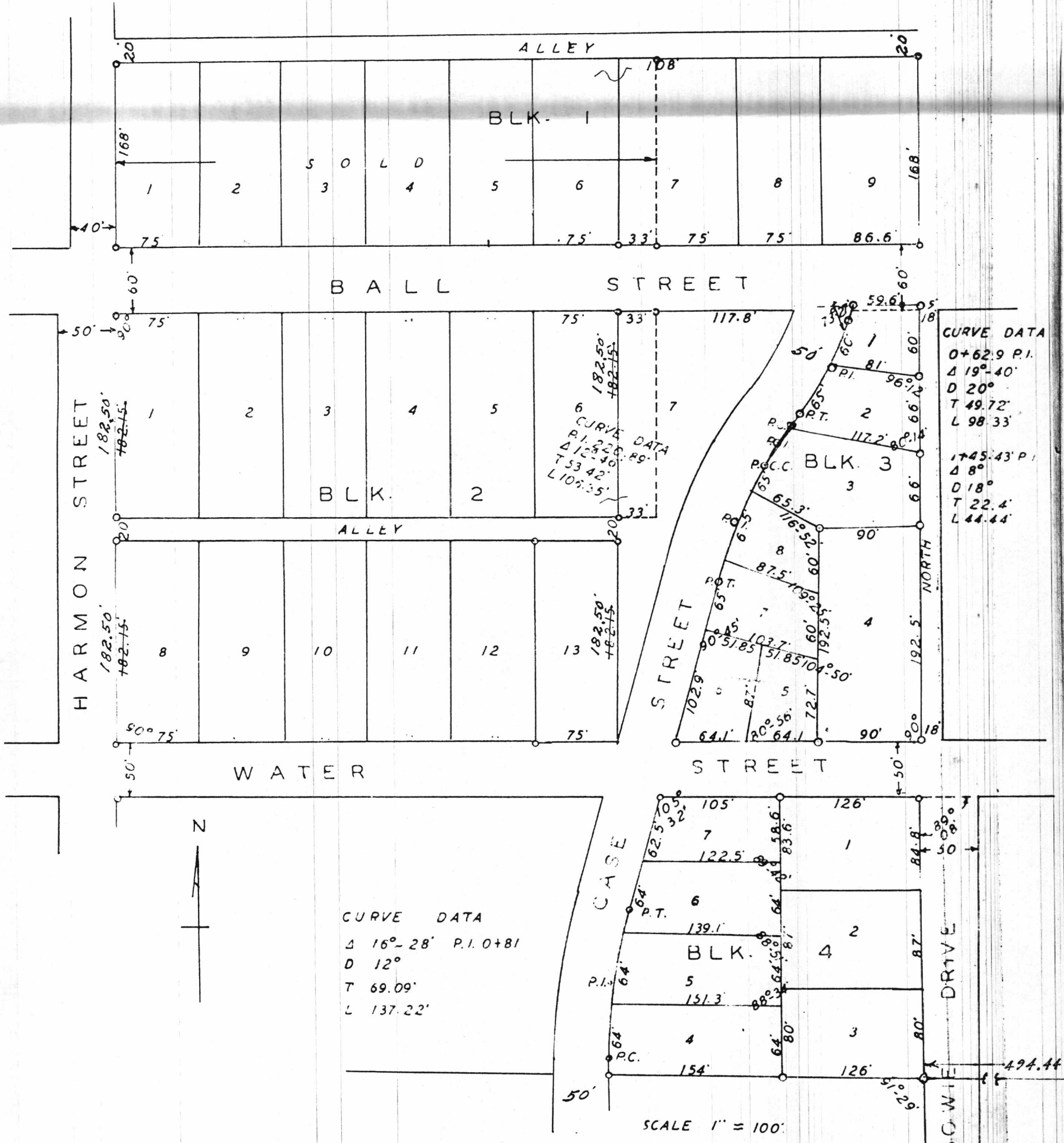


ADDITION



AUGUST 25, 1952

I CERTIFY THAT THE SURVEY WAS MADE ON THE GROUND AND THIS MAP IS A TRUE REPRESENTATION OF THE SURVEY

L. C. McCanlies
 L. C. MCGANLIES COUNTY ENGINEER - SURVEYOR
 OF PARKER COUNTY, TEXAS

Filed for record the 19th day of September, A.D. 1952 at 3:30 o'clock PM. and recorded the 22nd day of September, A.D., 1952 at 9 o'clock AM.
 W.P. Ashcroft, County Clerk
 Parker County, Texas

BY *Ola Mae Perkins* Deputy.