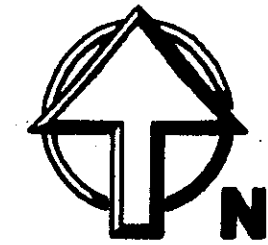
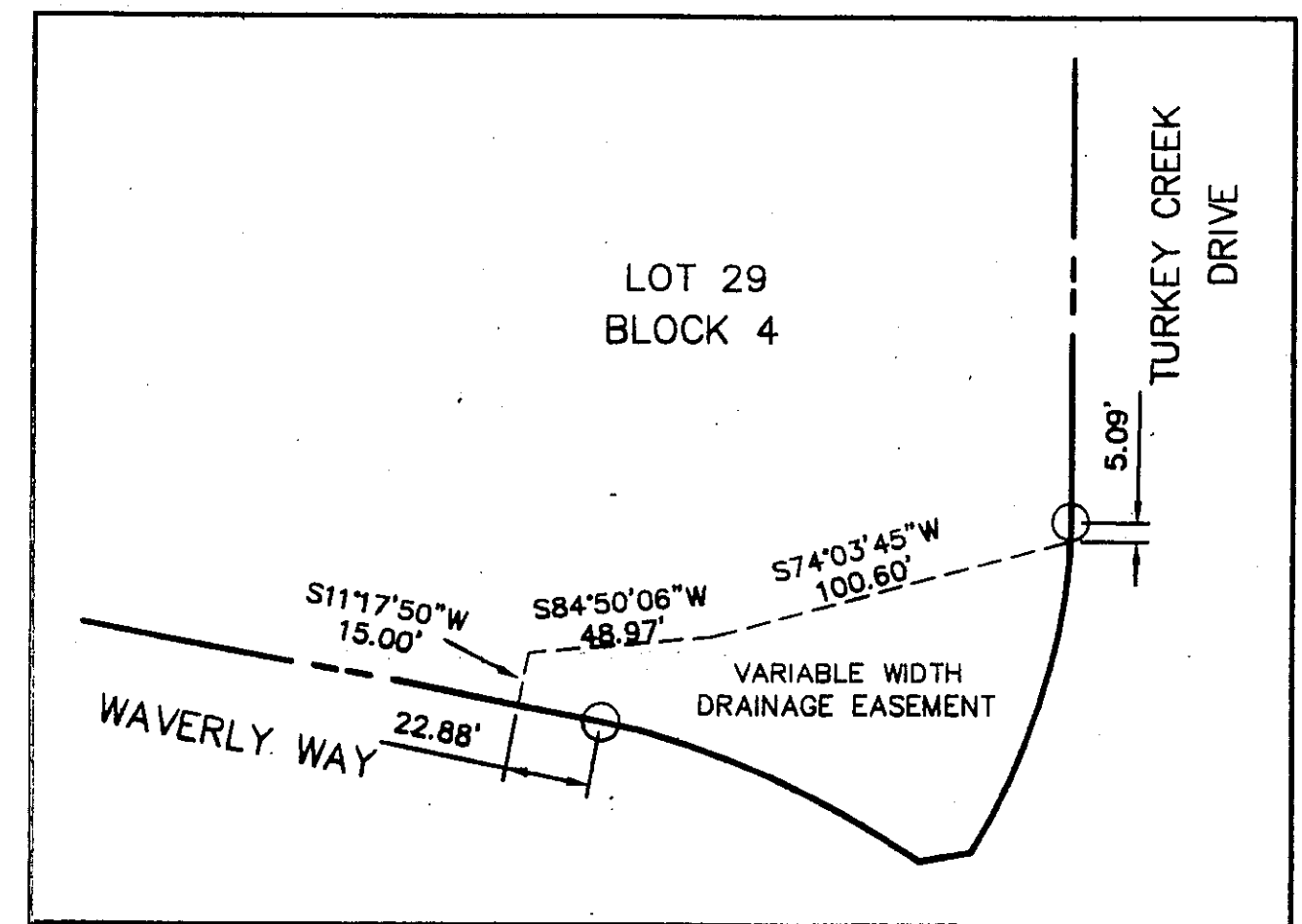


C746



GRAPHIC SCALE: 1 IN = 100 FT



DETAIL "A"

FINAL PLAT

# LOTS 3-21, BLOCK 2 LOTS 1-16, BLOCK 3 LOTS 14-30, BLOCK 4 McDAVID SPRINGS

BEING 63.057 ACRES OF LAND SITUATED IN THE  
I & GN RR COMPANY SURVEY, ABSTRACT NUMBER 1782,  
I & GN RR COMPANY SURVEY, ABSTRACT NUMBER 1783,  
& THE AJ OTTO SURVEY, ABSTRACT NUMBER 2340  
PARKER COUNTY, TEXAS

ACCT. NO: 14983  
SCH. DIST: AL  
CITY: CO  
MAP NO: L-19

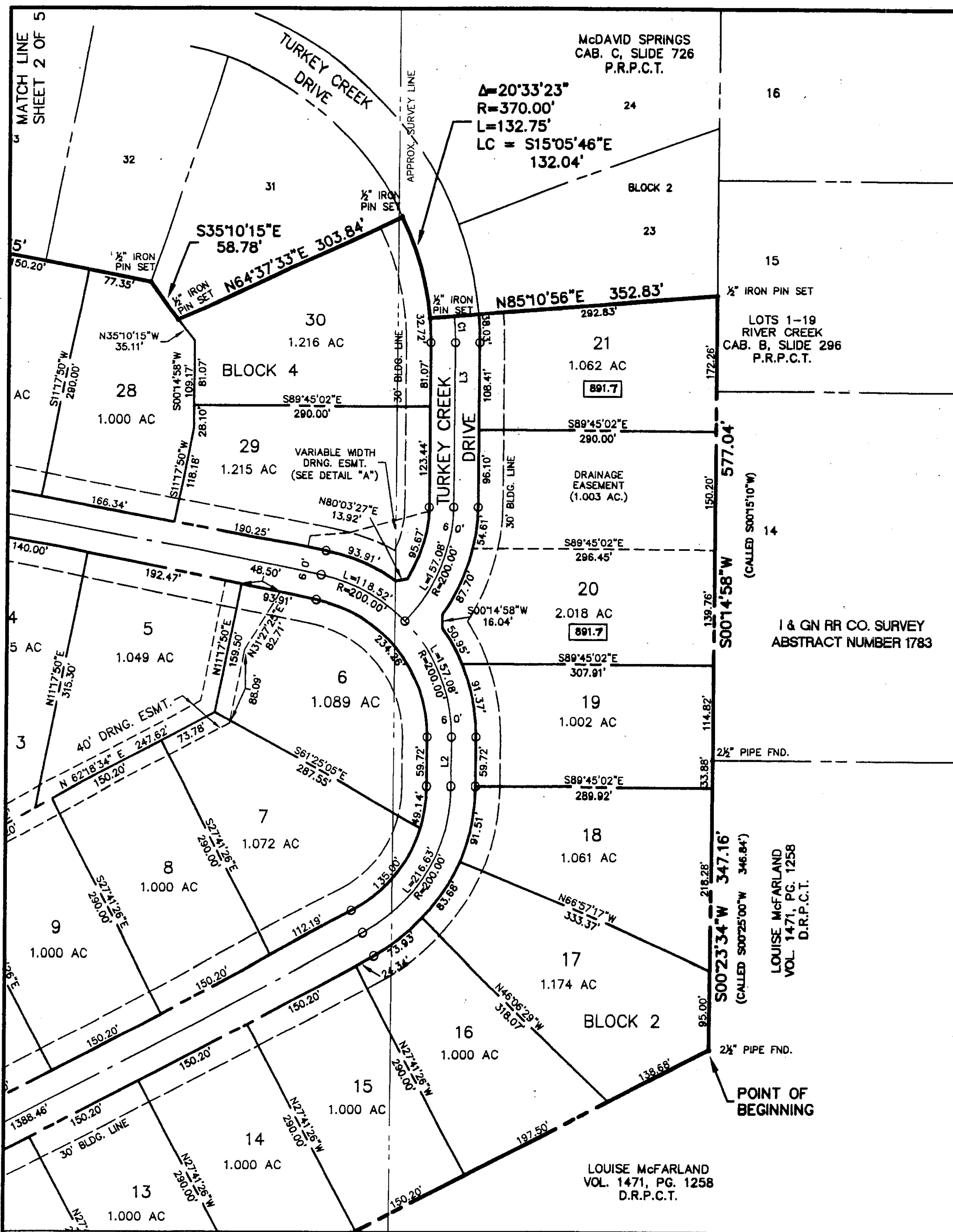
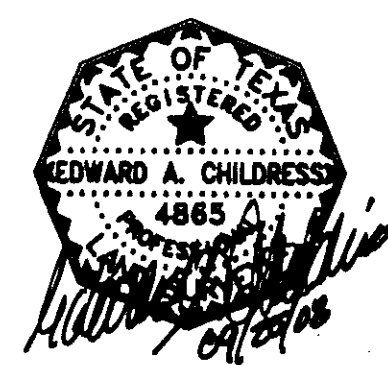
PREPARED AUGUST 15, 2008

## SD Engineering, Inc.

Site Development Engineering

PO Box 1357 Aledo, TX 76008-1357  
(817) 441-6400 Fax (817) 441-6085  
www.sd-engineering.com

SHEET 3 OF 5



891.5 DENOTES A MINIMUM FINISHED FLOOR ELEVATION SPECIFIED FOR THE DESIGNATED LOCATION SHOWN. BENCH MARK ELEV. 792.41 - TXDOT MONUMENT ON TOP OF BRIDGE ABUTMENT, N/E CORNER OF BRIDGE, CLEAR FORK OF TRINITY RIVER @ FM 5, S/W OF ALEDO, TX.

BASIS OF BEARING IS THE WEST LINE OF THE McDAVID INVESTMENTS GROUP I, LLC TRACT DESCRIBED IN DEED RECORDED IN VOLUME 2607, PAGE 1337, DEED RECORDS, PARKER COUNTY, TEXAS

MATCH LINE SHEET 4 OF 5