

Plat Cab. B Slide 678

N 89°15'00"E 1203.55'

SET 1/2" STEEL PIN BY CORNER POST

Doc Bl Vol Lc Pg  
00440231 OR 1994 1967

FILED AND RECORDED  
OFFICIAL PUBLIC RECORDS  
On Mar 08, 2002 at 03:25P

Document Number: 00440231

Amount: .00

by Leslie Coufal

STATE OF TEXAS COUNTY OF PARKER  
I hereby certify that this instrument was  
filed on the date and time stamped herein by me  
and was duly recorded in the volume and page  
of the named records of Parker County  
as stamped herein by me.

Mar 08, 2002

JEANNE BRUNSON, COUNTY CLERK  
PARKER COUNTY

SHEET 1  
INDEX

# MEMORY GARDENS OF THE VALLEY

R. A. KIDWELL SURVEY  
ABSTRACT 2016

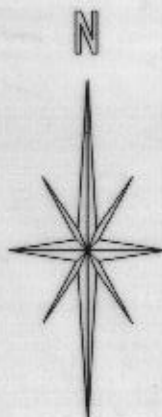
TOTAL ACREAGE  
23.39 ACRES

MAUSOLEUM  
[NOT SHOWN]

SECTION G  
Plat Cabinet A, Slide 48  
[Plat Records, Parker County, Texas]

## ACREAGE CHART

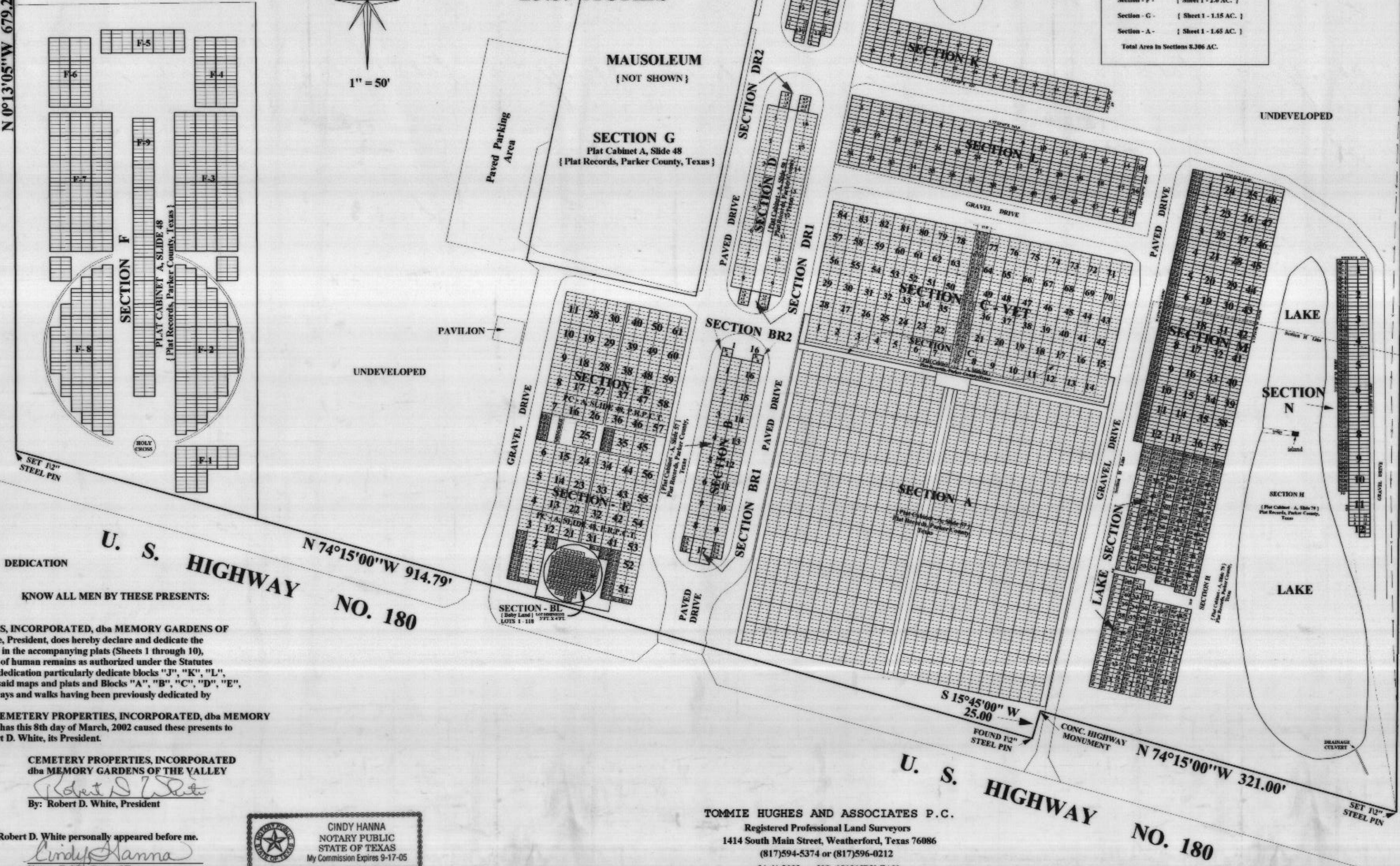
Total Acreage in Cemetery Tract - 23.39 AC.	
Section - C - VET -	[ Sheet 2 - 0.769 AC. ]
Section - D -	[ Sheet 3 - 0.161 AC. ]
Section - DR1 -	[ Sheet 3 - 0.009 AC. ]
Section - DR2 -	[ Sheet 3 - 0.009 AC. ]
Section - B -	[ Sheet 4 - 0.132 AC. ]
Section - BR1 -	[ Sheet 4 - 0.014 AC. ]
Section - BR2 -	[ Sheet 4 - 0.002 AC. ]
Section - E & BL -	[ Sheet 5 - 0.661 AC. ]
Section - J -	[ Sheet 6 - 0.218 AC. ]
Lake Section -	[ Sheet 7 - 0.357 AC. ]
Section - K -	[ Sheet 8 - 0.215 AC. ]
Section - L -	[ Sheet 9 - 0.376 AC. ]
Section - M -	[ Sheet 10 - 0.446 AC. ]
Section - N -	[ Sheet 10 - 0.139 AC. ]
Section - F -	[ Sheet 1 - 2.0 AC. ]
Section - G -	[ Sheet 1 - 1.15 AC. ]
Section - A -	[ Sheet 1 - 1.65 AC. ]
Total Area in Sections 8.306 AC.	



1" = 50'

N 0°13'05"W 679.25'

S 0°16'00"W 1006.39'



U. S. HIGHWAY NO. 180  
N 74°15'00"W 914.79'

U. S. HIGHWAY NO. 180  
S 15°45'00" W 25.00'  
FOUND 1/2" STEEL PIN  
CONC. HIGHWAY MONUMENT  
N 74°15'00"W 321.00'

DEDICATION  
THE STATE OF TEXAS )  
COUNTY OF PARKER )  
KNOW ALL MEN BY THESE PRESENTS:

The CEMETERY PROPERTIES, INCORPORATED, dba MEMORY GARDENS OF THE VALLEY, Robert D. White, President, does hereby declare and dedicate the premises and revisions described in the accompanying plats (Sheets 1 through 10), to the singular purpose of burial of human remains as authorized under the Statutes of the State of Texas, and by this dedication particularly dedicate blocks "J", "K", "L", "M", and "N" as marked upon said maps and plats and Blocks "A", "B", "C", "D", "E", "F", "G", and "H" with drive ways and walks having been previously dedicated by dedications heretofore made.

IN WITNESS WHEREOF, CEMETERY PROPERTIES, INCORPORATED, dba MEMORY GARDENS OF THE VALLEY, has this 8th day of March, 2002 caused these presents to be signed and executed by Robert D. White, its President.

CEMETERY PROPERTIES, INCORPORATED  
dba MEMORY GARDENS OF THE VALLEY  
*Robert D. White*  
By: Robert D. White, President

STATE OF TEXAS  
COUNTY OF PARKER  
On this 8 day of March, 2002, Robert D. White personally appeared before me,  
*Cindy Hanna*  
Notary Public, State of Texas

CINDY HANNA  
NOTARY PUBLIC  
STATE OF TEXAS  
My Commission Expires 9-17-05

TOMMIE HUGHES AND ASSOCIATES P.C.  
Registered Professional Land Surveyors  
1414 South Main Street, Weatherford, Texas 76086  
(817)594-5374 or (817)596-0212  
3/4/2002 NO. 18121IDX.ZAK