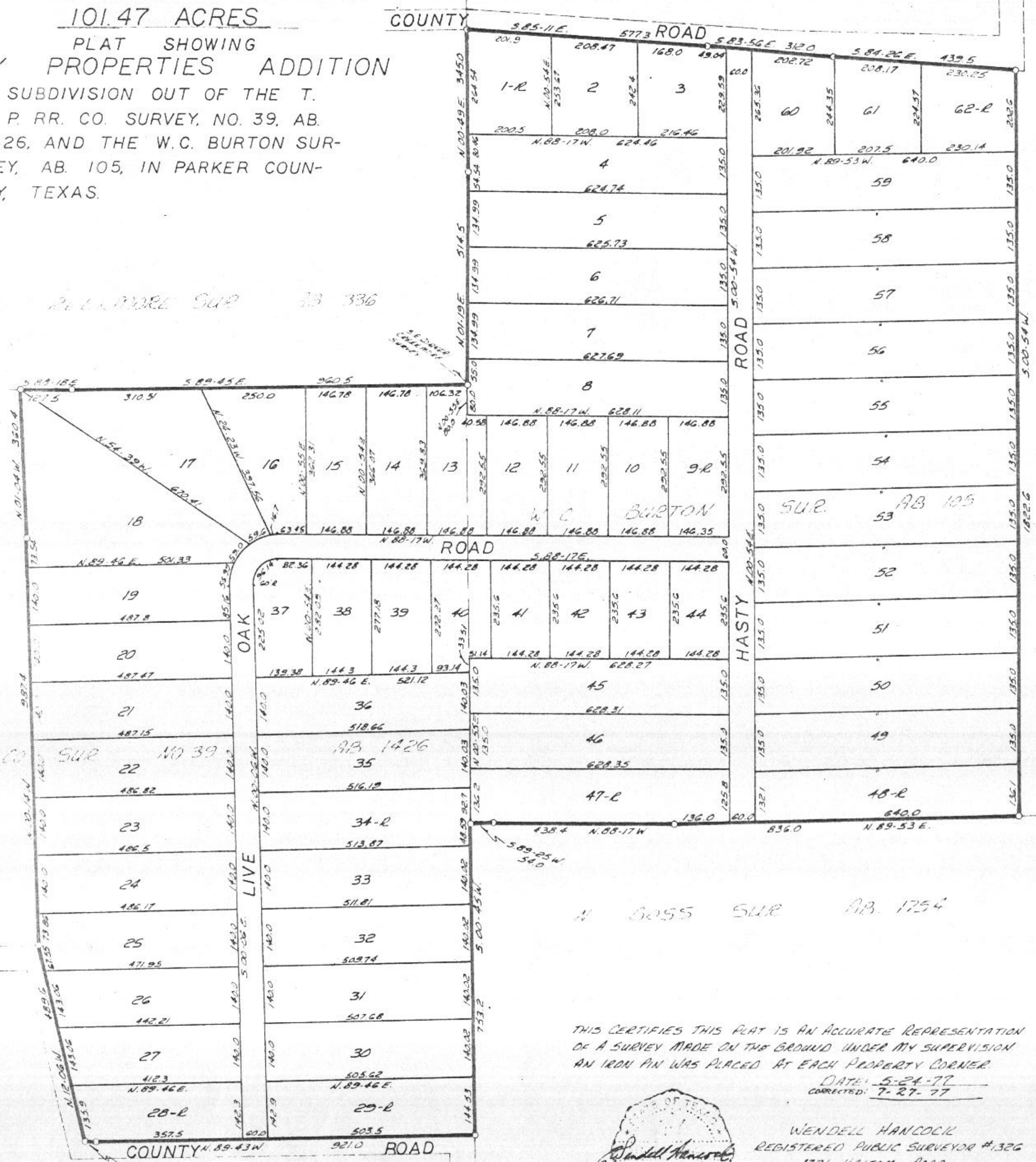


CORRECTED PLAT OF
101.47 ACRES
PLAT SHOWING
MIDWAY PROPERTIES ADDITION

A SUBDIVISION OUT OF THE T.
8 P. RR. CO. SURVEY, NO. 39, AB.
1426, AND THE W.C. BURTON SUR-
VEY, AB. 105, IN PARKER COUN-
TY, TEXAS.

R. R. WILLMORE SUR 336



62464

RECEIVED AND FILED
FOR RECORD
At 3:30 O'Clock P.M.
SEP 1 1977
Carrie Reed Co. Clerk
PARKER COUNTY, TEXAS
By [Signature] Deputy
5,00pd

STATE OF TEXAS
COUNTY OF PARKER
I hereby certify that this instrument was
filed on the date and time stamped here
on by me and was duly recorded on the
1 day of Sept A.D., 1977, in
Vol. 364 page 16 of the Plat
records of Parker, Texas



Carrie Reed
County Clerk, Parker
County, Texas

SCALE 1" = 200'

APPROVED BY COMMISSIONERS COURT
PARKER COUNTY TEXAS 8.26.77
DATE 8.26.77
BY [Signatures]
Jenny Sidwell
William Wyatt
Charles [unclear]
E.K. Combs
J.J. McCaughey

THIS CERTIFIES THIS PLAT IS AN ACCURATE REPRESENTATION
OF A SURVEY MADE ON THE GROUND UNDER MY SUPERVISION
AN IRON PIN WAS PLACED AT EACH PROPERTY CORNER
DATE: 5-24-77
CORRECTED: 7-27-77



WENDELL HANCOCK
REGISTERED PUBLIC SURVEYOR #1326
1721 HALTOM ROAD
FORT WORTH TEXAS 76117
834-6243