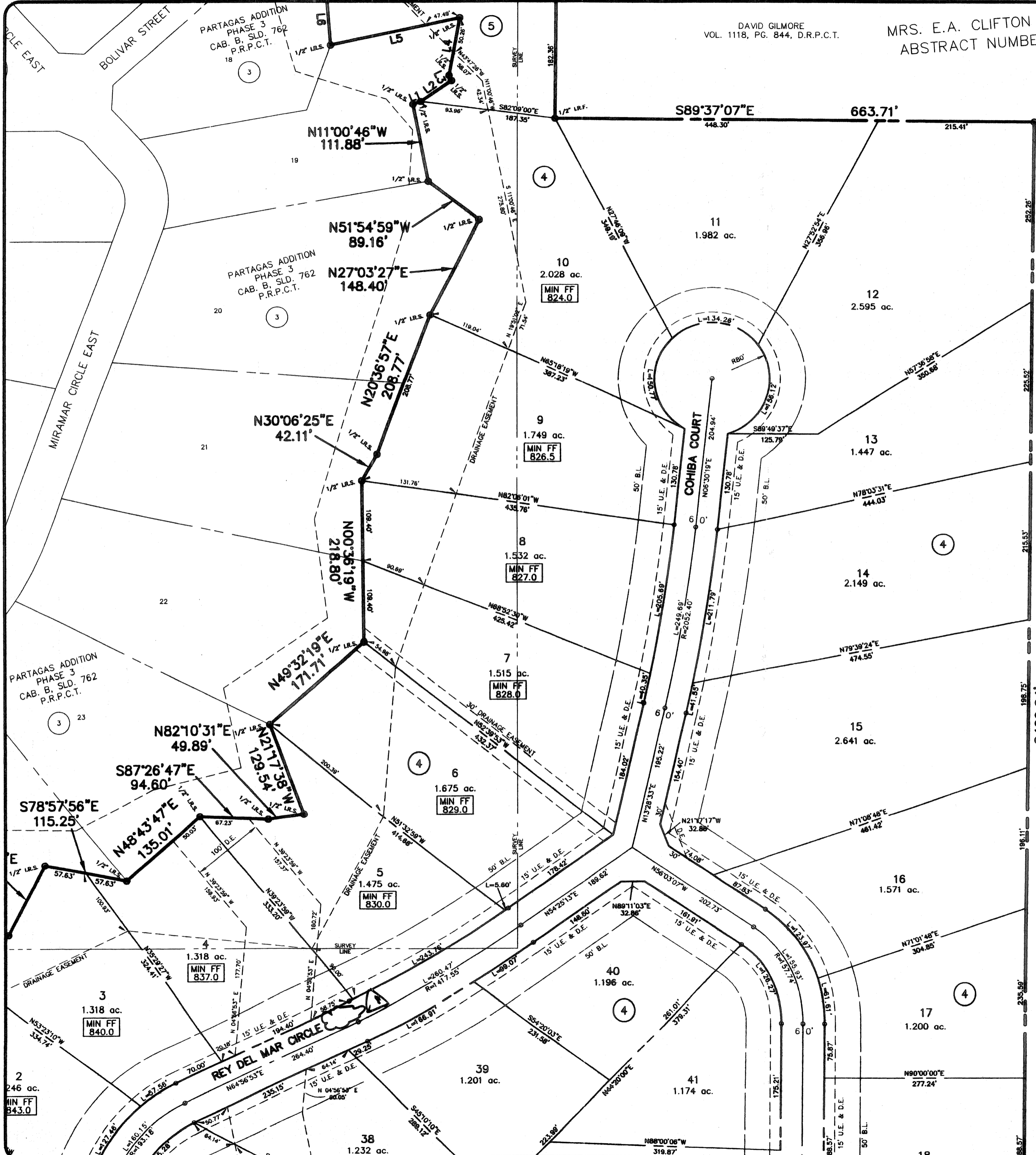
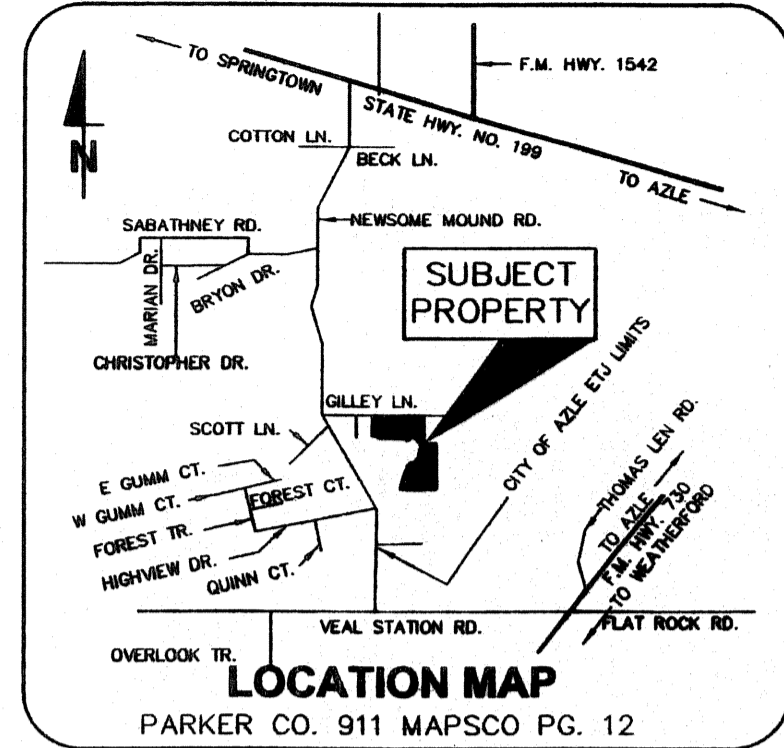


C-554

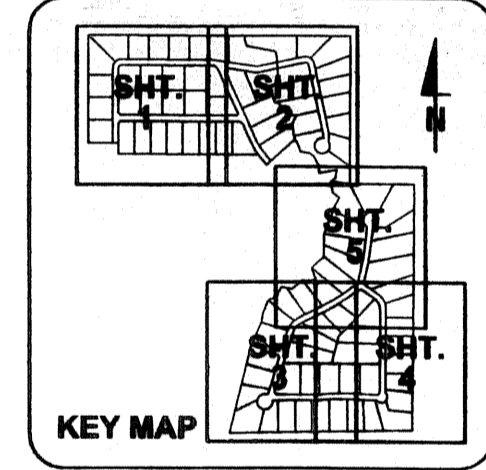
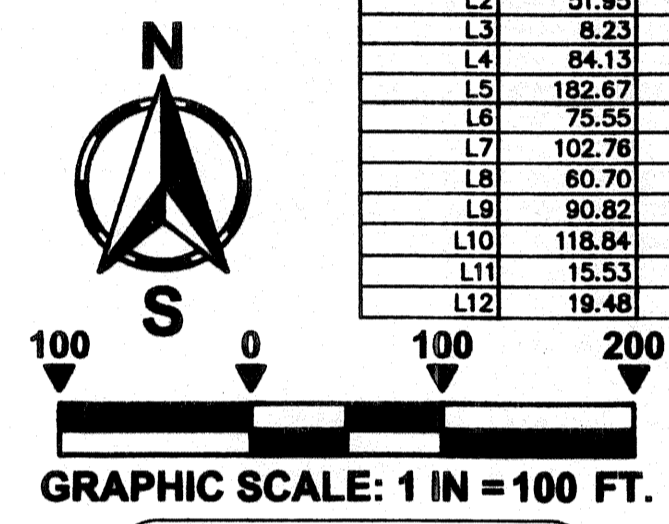


DAVID GILMORE  
VOL. 1118, PG. 844, D.R.P.C.T.

MRS. E.A. CLIFTON SURVEY,  
ABSTRACT NUMBER 1726



| LINE | LENGTH | BEARING     |
|------|--------|-------------|
| L1   | 11.50  | N68°53'51"E |
| L2   | 51.95  | N54°56'13"E |
| L3   | 8.23   | N25°25'32"W |
| L4   | 84.13  | N09°54'13"E |
| L5   | 182.67 | S77°41'04"W |
| L6   | 75.55  | N04°35'43"W |
| L7   | 102.78 | N27°23'15"W |
| L8   | 60.70  | N50°47'24"W |
| L9   | 90.82  | N82°14'23"W |
| L10  | 118.84 | N21°33'52"W |
| L11  | 15.53  | S84°06'59"W |
| L12  | 19.48  | N10°08'58"W |



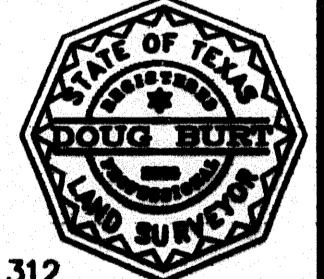
ACCT. NO: 16075  
SCH. DIST: AZ  
CITY: CO  
MAP NO: M.9

**CORRECTED FINAL PLAT**  
**PARTAGAS ADDITION**  
**LOTS 1-47, BLOCK 4**  
**LOTS 1-48 BLOCK 5**  
**PHASE FOUR**

BEING 152.753 ACRES OF LAND IN THE:  
ISAAC H. MEEK ABSTRACT NUMBER 894,  
MRS. E. A. CLIFTON ABSTRACT NUMBER 1726,  
T. & P. RR. SURVEY, ABSTRACT NUMBER 1432,  
PARKER COUNTY, TEXAS

FEBRUARY 9, 2007

OWNER / DEVELOPER PARTGAS PROPERTIES, LTD. 3916 ANN ARBOR COURT FORT WORTH, TEXAS 76109  
SURVEYOR TEXAS GEOSPATIAL 117 JOHN ST. ALEDO, TEXAS 76008 (817) 441-6199 (817) 441-6805 fax



ORIGINAL PLAT RECORDED CABINET B, SLIDE 312

**CivilSolutions Inc**  
Engineers Surveyors Planners  
P.O. Box 100247, Fort Worth, Texas, 76185  
(817) 423-0060 (817) 346-0520 Fax

SHEET FIVE OF SIX

Z:\Lone Projects\2005\06-002 Partagas\c\corr FP4.dwg, 2/13/2007 4:56:24 PM