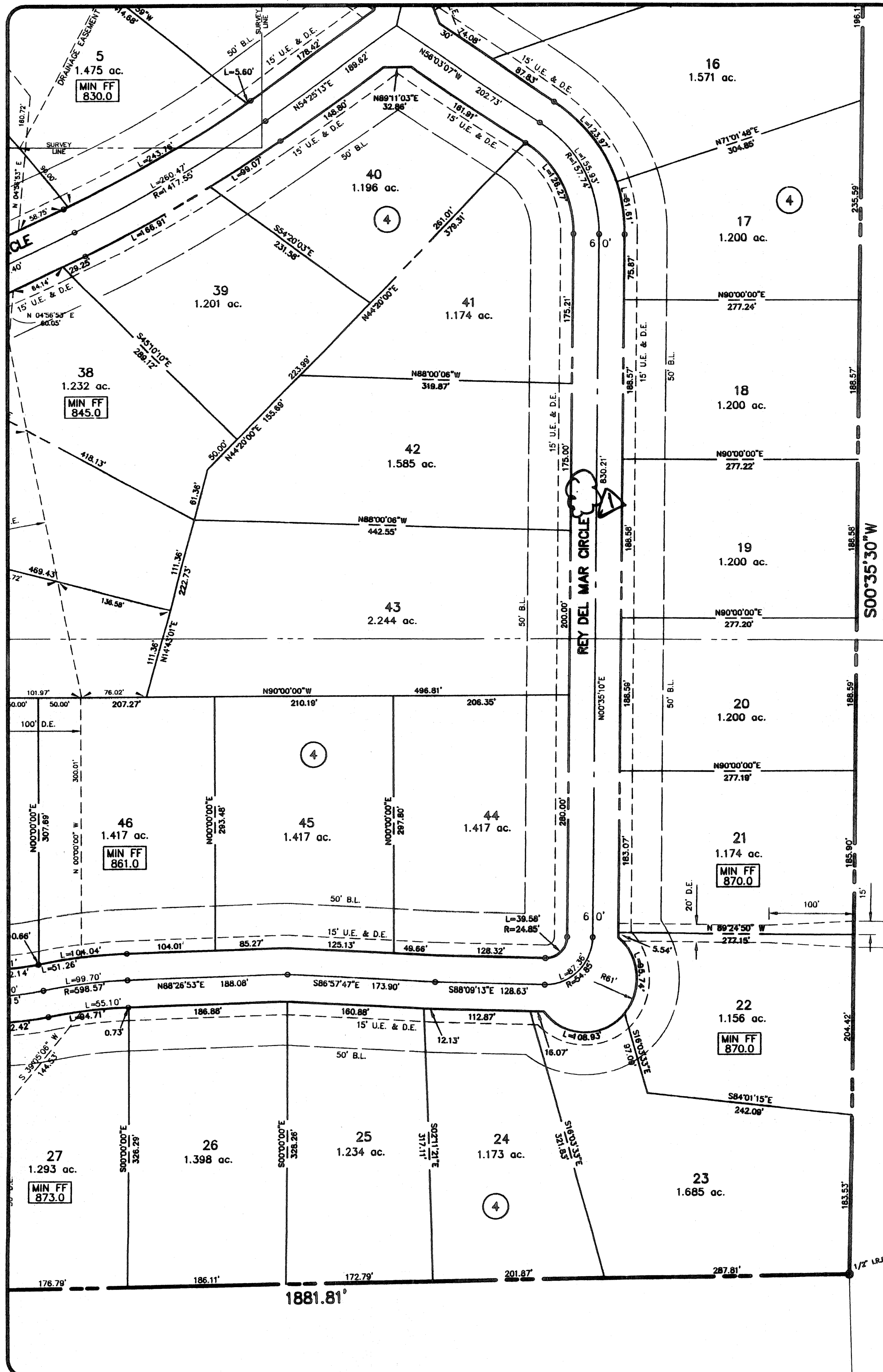


C-554

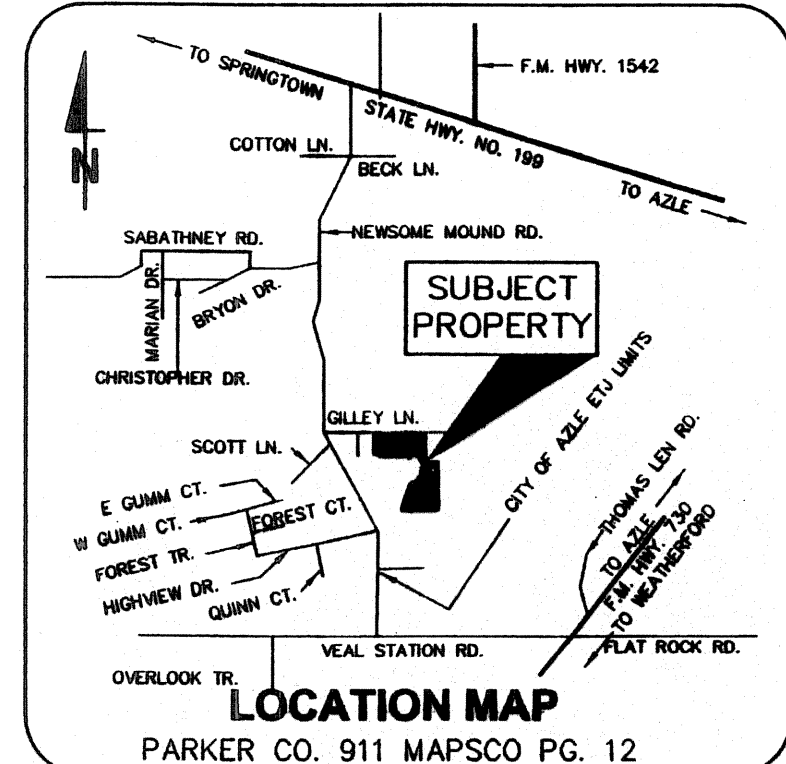


DAVID GILMORE
VOL. 1118, PG. 844, D.R.P.C.T.

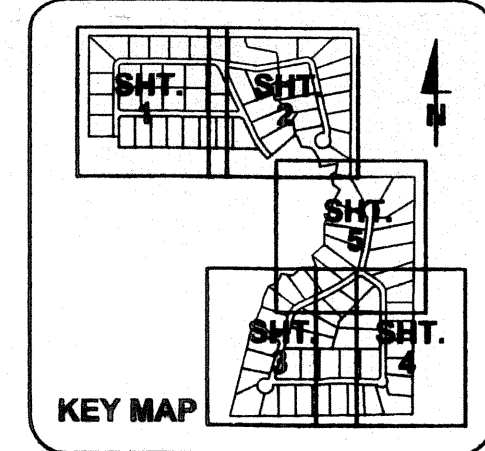
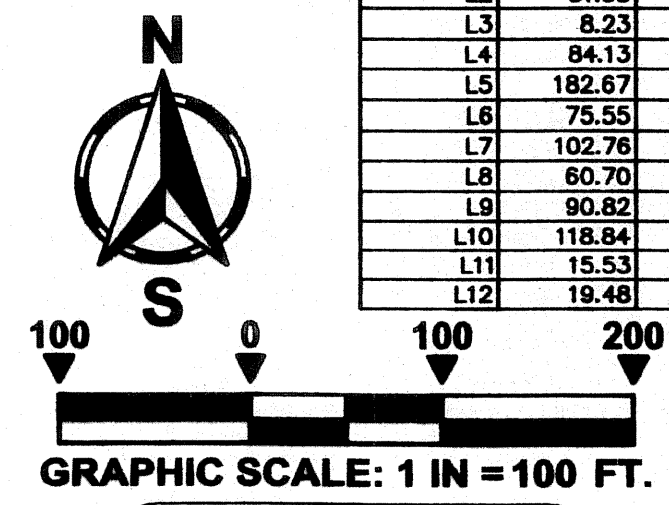
MRS. E.A. CLIFTON SURVEY,
ABSTRACT NUMBER 1726

T. & P. RR. CO. SURVEY,
ABSTRACT NUMBER 1432

GORDON YATES
VOL. 1705, PG. 991, D.R.P.C.T.



LINE	LENGTH	BEARING
L1	11.50	N88°53'51"E
L2	51.95	N54°56'13"E
L3	8.23	N25°25'32"W
L4	84.13	N09°54'13"E
L5	182.67	S77°41'04"W
L6	75.55	N04°35'43"W
L7	102.76	N27°23'15"W
L8	60.70	N50°47'24"W
L9	90.82	N82°14'23"W
L10	118.84	N21°33'52"W
L11	15.53	S84°05'59"W
L12	19.48	N10°08'58"W



ACCT. NO.: 16075
SCH. DIST.: AZ
CITY: CO
MAP NO.: M-9

CORRECTED FINAL PLAT
PARTAGAS ADDITION
LOTS 1-47, BLOCK 4
LOTS 1-48 BLOCK 5
PHASE FOUR

BEING 152.753 ACRES OF LAND IN THE:
ISAAC H. MEEK ABSTRACT NUMBER 894,
MRS. E. A. CLIFTON ABSTRACT NUMBER 1726,
T. & P. RR. SURVEY, ABSTRACT NUMBER 1432,
PARKER COUNTY, TEXAS

FEBRUARY 9, 2007

OWNER / DEVELOPER PARTGAS PROPERTIES, LTD. 3916 ANN ARBOR COURT FORT WORTH, TEXAS 76109
SURVEYOR TEXAS GEOSPATIAL 117 JOHN ST. ALEDO, TEXAS 76008 (817) 441-6199 (817) 441-6805 fax



ORIGINAL PLAT RECORDED CABINET B, SLIDE 312

CivilSolutions Inc
Engineers Surveyors Planners
P.O. Box 100247, Fort Worth, Texas, 76185
(817) 423-0060 (817) 346-0520 Fax