

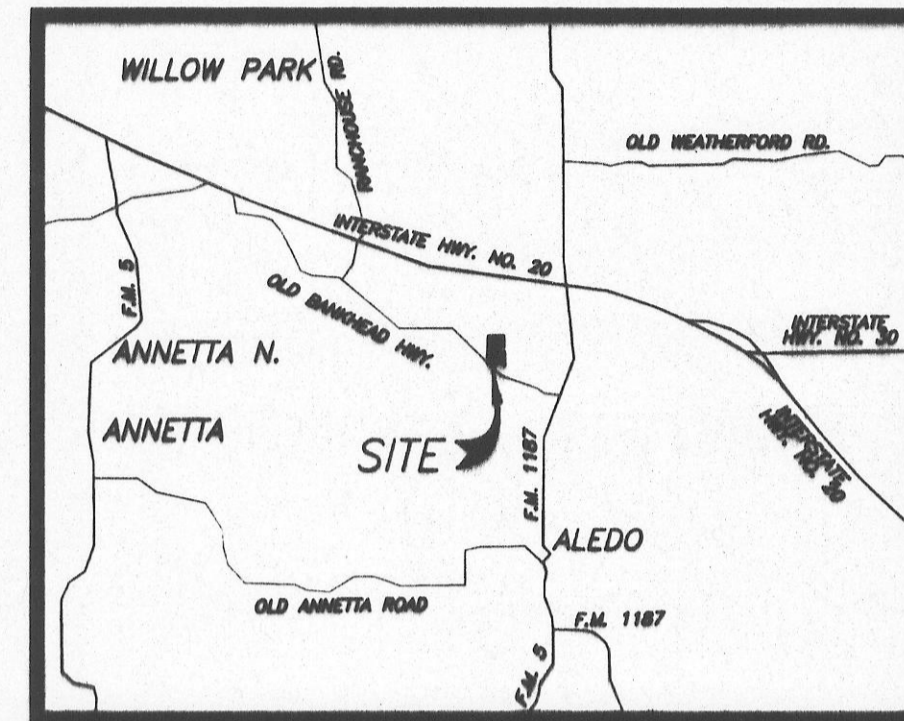
C-673

Doc# 676746  
Book 2628 Page 241

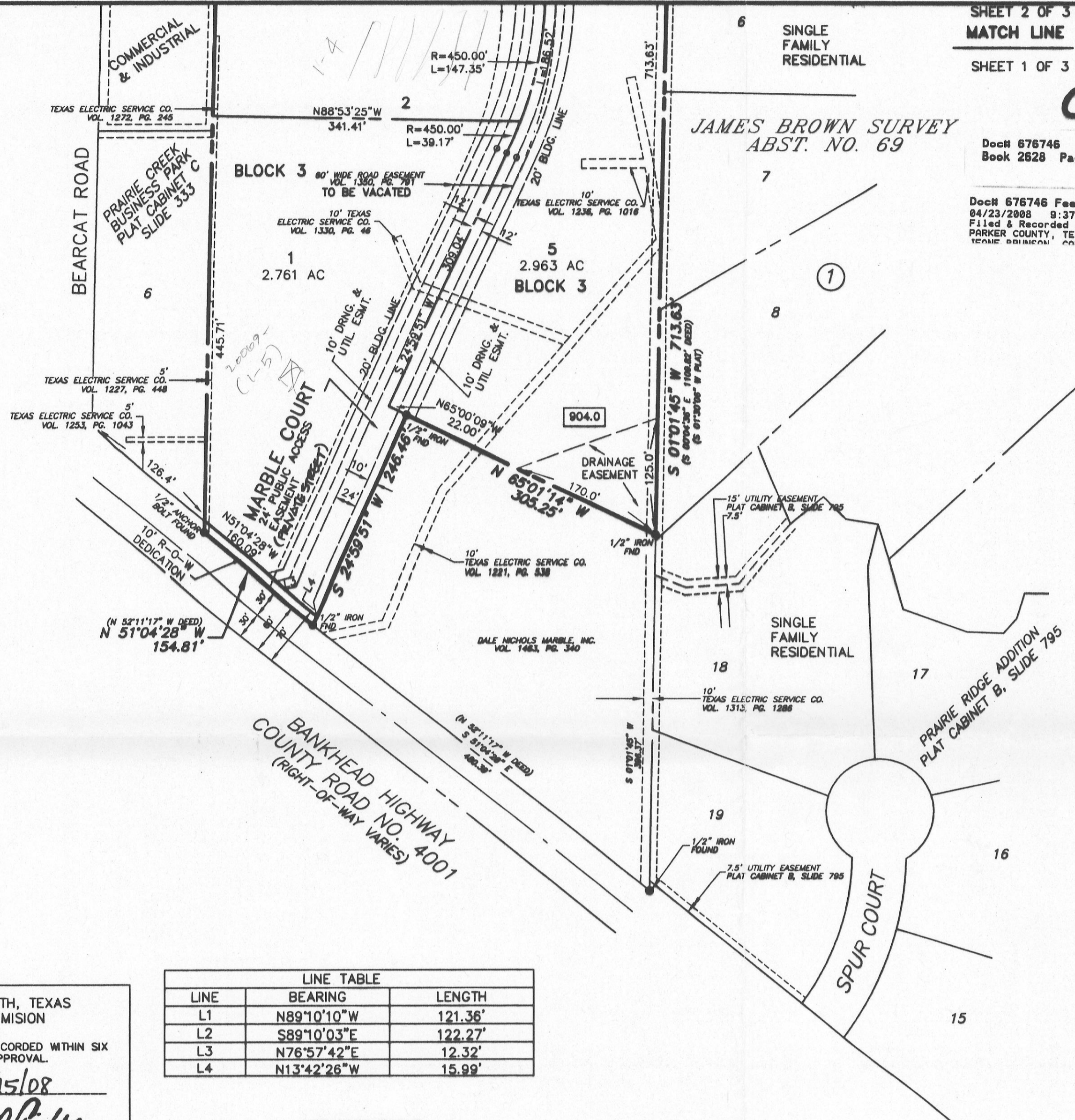
Doc# 676746 Fees: \$74.00  
04/23/2008 9:37AM # Pages 3  
Filed & Recorded in Official Records of  
PARKER COUNTY, TEXAS  
TEXAS GEOSPATIAL COUNTY CLERK



GRAPHIC SCALE: 1 IN = 100 FT



VICINITY MAP N.T.S.



I DO HEREBY CERTIFY THAT THIS  
PLAT IS TRUE AND CORRECT AS  
SURVEYED ON THE GROUND.

BY: Doug Burt  
DOUG BURT, RP# 2023

DATE: 04-08-08



L. BAH  
9-10-08

FP-008-002

FINAL PLAT

# LOTS 1-5, BLOCK 3 PRAIRIE CREEK BUSINESS PARK

BEING 16.593 ACRES OF LAND SITUATED IN THE  
THOMAS FREEMAN SURVEY, ABSTRACT NUMBER 475 &  
THE JAMES BROWN SURVEY, ABSTRACT NUMBER 69  
PARKER COUNTY, TEXAS

PREPARED NOVEMBER 29, 2007  
REVISED JANUARY 2, 2008  
REVISED FEBRUARY 7, 2008  
REVISED FEBRUARY 19, 2008

PREPARED BY

## SD Engineering, Inc.

Site Development Engineering

PO Box 1357 Aledo, TX 76008-1357  
(817) 441-6400 Fax (817) 441-6085  
www.sd-engineering.com

SHEET 1 OF 3

LINE	BEARING	LENGTH
L1	N89°10'10"W	121.36'
L2	S89°10'03"E	122.27'
L3	N76°57'42"E	12.32'
L4	N13°42'26"W	15.99'

LOT	GROSS ACRES	NET ACRES
1	2.761	2.157
2	4.252	3.765
3	3.535	3.432
4	3.045	3.045
5	2.963	2.428

CITY OF FORT WORTH, TEXAS  
CITY PLAN COMMISSION

NOTE:  
THIS PLAT IS VALID ONLY IF RECORDED WITHIN SIX  
(6) MONTHS AFTER DATE OF APPROVAL.

PLAT APPROVED DATE: 4/15/08

BY: Dennis R. Singler  
CHAIRMAN

BY: Dana Burt  
SECRETARY

PARKER COUNTY  
COMMISSIONER'S COURT

PLAT APPROVED DATE: 4-22-08

BY: C. ADSENT  
COUNTY JUDGE

BY: [Signature]  
COMMISSIONER, PRECINCT #1

BY: [Signature]  
COMMISSIONER, PRECINCT #2

BY: [Signature]  
COMMISSIONER, PRECINCT #3

BY: [Signature]  
COMMISSIONER, PRECINCT #4

SURVEYOR:  
TEXAS GEOSPATIAL  
PO BOX 1029  
ALEDO, TEXAS 76008  
817.441.6199

OWNER:  
BPR ENTERPRISES, LLC  
9516 CAMP BOWIE BLVD. WEST  
FORT WORTH, TEXAS 76116  
817.228.9447

ACCT. NO.: 16335  
SCH. DIST.: AL  
CITY: CO  
MAP NO.: L-16