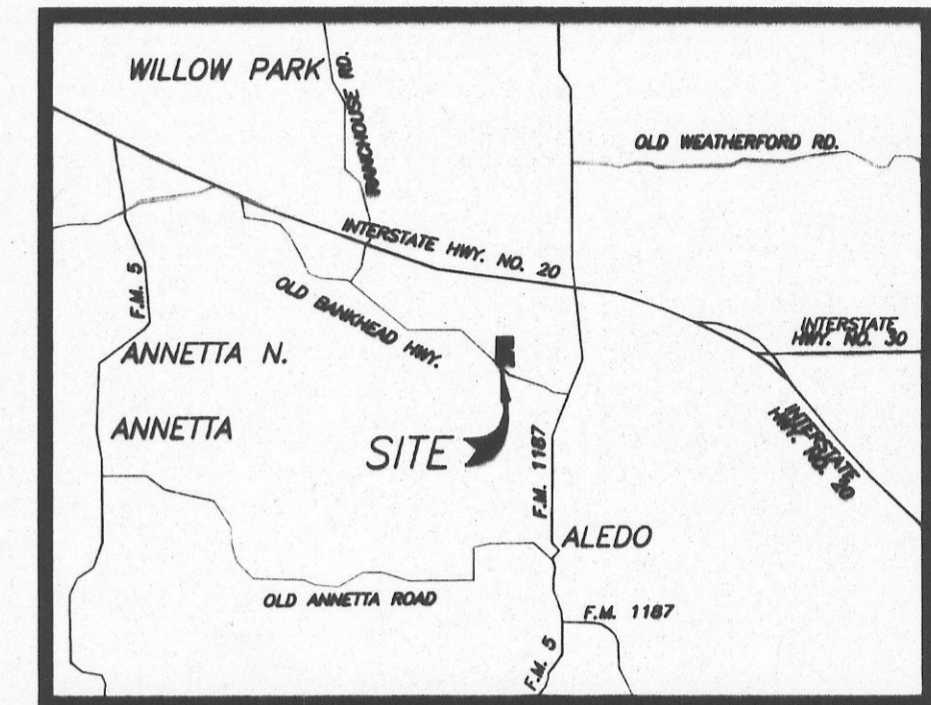
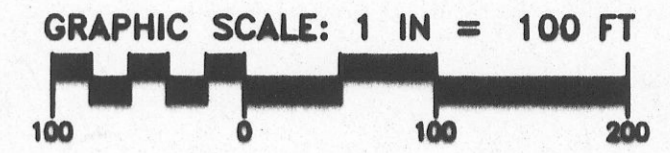
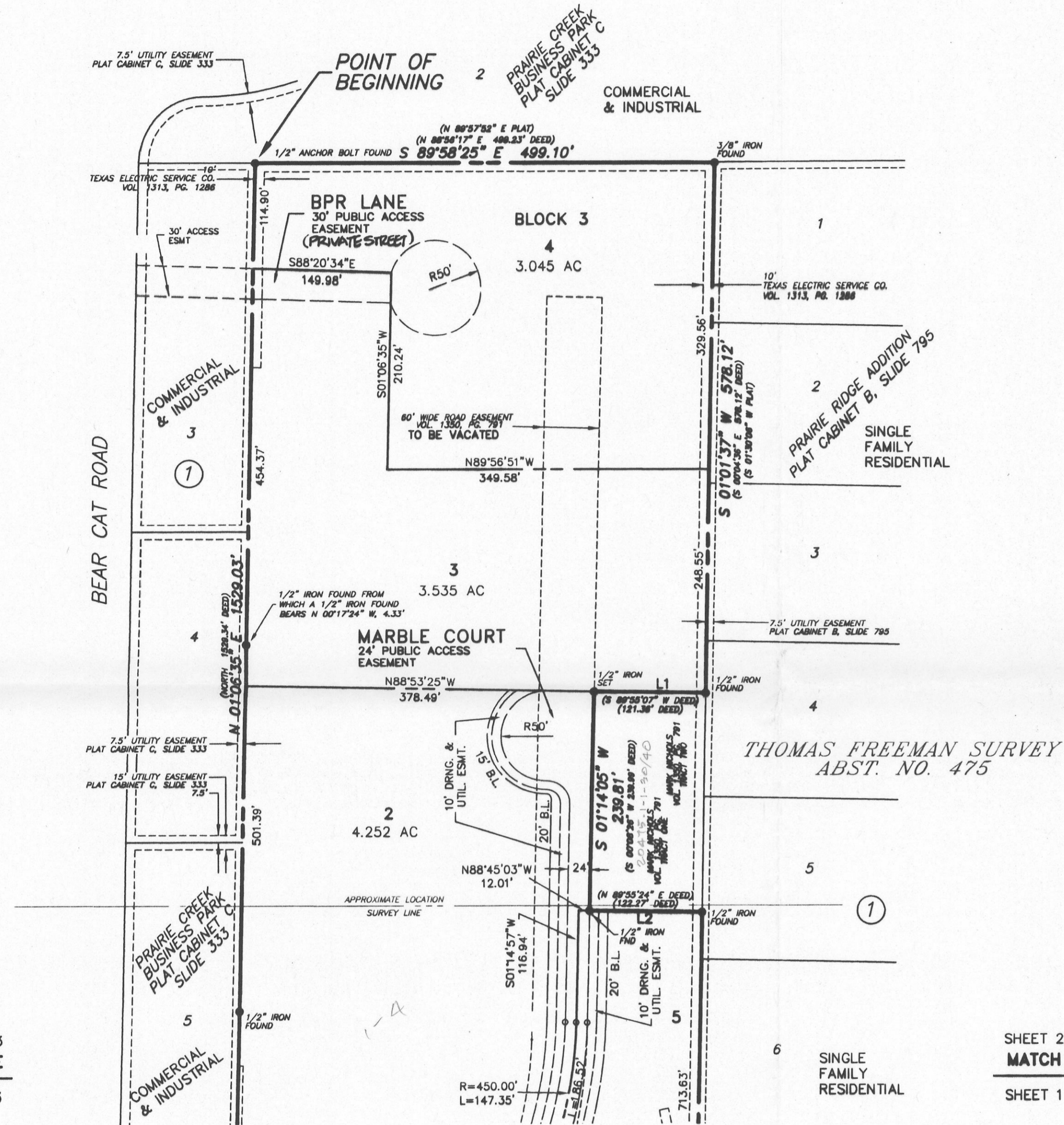


C-673



VICINITY MAP N.T.S.



SHEET 2 OF 3  
MATCH LINE  
SHEET 1 OF 3

SHEET 2 OF 3  
MATCH LINE  
SHEET 1 OF 3

LINE TABLE		
LINE	BEARING	LENGTH
L1	N89°10'10"W	121.36'
L2	S89°10'03"E	122.27'
L3	N76°57'42"E	12.32'
L4	N13°42'26"W	15.99'

LOT AREA TABLE		
LOT	GROSS ACRES	NET ACRES
1	2.761	2.157
2	4.252	3.765
3	3.535	3.432
4	3.045	3.045
5	2.963	2.428

**SURVEYOR:**  
TEXAS GEOSPATIAL  
PO BOX 1029  
ALEDO, TEXAS 76008  
817.441.6199

**OWNER:**  
BPR ENTERPRISES, LLC  
9516 CAMP BOWIE BLVD. WEST  
FORT WORTH, TEXAS 76116  
817.228.9447



I DO HEREBY CERTIFY THAT THIS PLAT IS TRUE AND CORRECT AS SURVEYED ON THE GROUND.  
BY: Doug Burt  
DOUG BURT, REG. #2023  
DATE: 04-08-08



Lt. BAH  
4-10-08

FP-008-002  
FINAL PLAT

**LOTS 1-5, BLOCK 3  
PRAIRIE CREEK  
BUSINESS PARK**

BEING 16.593 ACRES OF LAND SITUATED IN THE THOMAS FREEMAN SURVEY, ABSTRACT NUMBER 475 & THE JAMES BROWN SURVEY, ABSTRACT NUMBER 69 PARKER COUNTY, TEXAS

PREPARED NOVEMBER 29, 2007  
REVISED JANUARY 2, 2008  
REVISED FEBRUARY 7, 2008  
REVISED FEBRUARY 19, 2008

PREPARED BY

**SD Engineering, Inc.**

Site Development Engineering

PO Box 1357 Aledo, TX 76008-1357  
(817) 441-6400 Fax (817) 441-6085  
www.sd-engineering.com

SHEET 2 of 3