

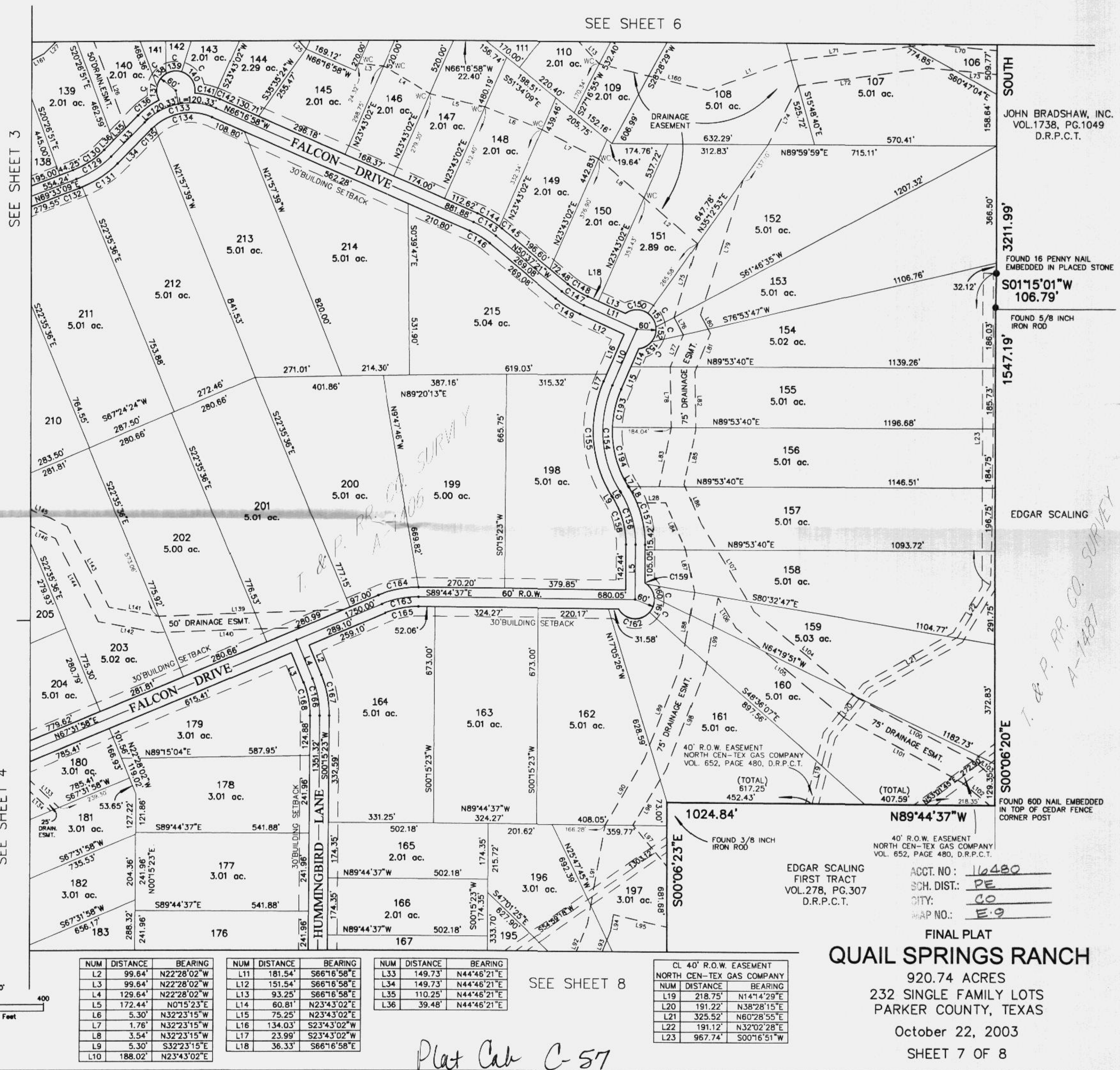
NUM	DELTA	ARC	RADIUS	BEARING	DISTANCE
C129	24°46'48"	129.75'	300.00'	N57°09'45"E	128.74'
C130	24°46'48"	116.77'	270.00'	N57°09'45"E	115.87'
C131	23°21'54"	134.57'	330.00'	N56°27'18"E	133.64'
C132	01°24'53"	8.15'	330.00'	N68°50'42"E	8.15'
C133	68°56'40"	240.66'	200.00'	S79°14'41"W	226.40'
C134	64°30'16"	191.39'	170.00'	S81°27'53"W	181.44'
C135	04°26'23"	13.17'	170.00'	S46°59'33"W	13.17'
C136	20°12'24"	81.11'	230.00'	S54°52'33"W	80.70'
C137	41°32'18"	43.50'	60.00'	S09°08'48"E	42.55'
C138	47°44'47"	50.00'	60.00'	S35°29'45"W	48.57'
C139	47°44'47"	50.00'	60.00'	S83°14'32"W	48.57'
C140	81°17'23"	85.13'	60.00'	N32°14'22"W	78.16'
C141	15°24'07"	61.83'	230.00'	N78°47'19"W	61.64'
C142	04°48'17"	19.29'	230.00'	N68°41'07"W	19.28'
C143	15°39'37"	82.00'	300.00'	N58°27'09"W	81.74'
C144	13°55'07"	80.17'	330.00'	N59°19'25"W	79.97'
C145	01°44'30"	10.03'	330.00'	N51°29'36"W	10.03'
C146	15°39'37"	73.80'	270.00'	N58°27'09"W	73.57'
C147	15°39'37"	82.00'	300.00'	S58°27'09"E	81.74'
C148	15°39'37"	73.80'	270.00'	S58°27'09"E	73.57'
C149	15°39'37"	90.20'	330.00'	S58°27'09"E	89.92'
C150	71°36'55"	75.00'	60.00'	S89°31'29"W	70.21'
C151	47°44'47"	50.00'	60.00'	N30°47'39"W	48.57'
C152	47°44'47"	50.00'	60.00'	N16°57'08"E	48.57'
C153	42°53'29"	44.92'	60.00'	N62°16'17"E	43.87'
C154	56°06'16"	342.72'	350.00'	S04°20'07"E	329.19'
C155	56°06'16"	372.10'	380.00'	S04°20'07"E	357.41'
C156	32°38'38"	170.92'	300.00'	N16°03'56"W	168.62'
C157	32°38'38"	188.02'	330.00'	N16°03'56"W	185.48'
C158	32°38'38"	153.83'	270.00'	N16°03'56"W	151.76'
C159	5°38'55"	5.92'	60.00'	N56°55'09"W	5.91'
C160	47°44'47"	50.00'	60.00'	N30°13'18"W	48.57'
C161	47°44'47"	50.00'	60.00'	N17°31'30"E	48.57'
C162	108°51'30"	114.00'	60.00'	S84°10'22"E	97.61'
C163	22°43'25"	118.98'	300.00'	S78°53'41"W	118.20'
C164	22°43'25"	130.88'	330.00'	S78°53'41"W	130.02'
C165	22°43'25"	107.08'	270.00'	S78°53'41"W	106.38'
C166	22°43'25"	118.98'	300.00'	N11°06'19"W	118.20'
C167	22°43'25"	130.88'	330.00'	N11°06'19"W	130.02'
C168	22°43'25"	107.08'	270.00'	N11°06'19"W	106.38'
C193	21°36'36"	120.69'	320.00'	S12°54'43"W	119.98'
C194	34°29'40"	192.65'	320.00'	S15°08'25"E	189.76'

DRAINAGE EASEMENT					
WC = Witness Corner 5/8 inch capped iron rod set (BHB INC)					
NUM	DISTANCE	BEARING	BEARING		
L1	276.85'	N69°56'10"E	L89	323.83'	N21°03'41"E
L2	219.87'	S49°14'56"E	L90	240.64'	N30°41'42"E
L3	78.40'	S84°26'18"E	L91	311.60'	S10°04'28"W
L4	169.49'	S59°41'36"E	L92	469.90'	S22°08'24"W
L5	177.12'	S77°03'14"E	L93	501.45'	S22°08'24"W
L6	192.27'	S69°20'16"E	L94	49.84'	S10°04'28"W
L7	199.31'	S63°05'57"E	L95	171.52'	N77°25'37"W
L8	186.70'	S49°46'22"E	L96	202.89'	N30°41'42"E
L13	189.77'	S42°38'07"E	L97	167.02'	S39°43'31"E
L25	664.23'	S42°21'11"E	L98	337.54'	N21°03'41"E
L27	118.96'	S44°46'21"W	L99	223.79'	S9°48'52"W
L28	90.84'	N89°53'40"E	L100	420.64'	N61°37'15"W
L70	214.13'	N84°53'38"W	L101	420.58'	N61°37'15"W
L71	434.46'	N82°49'13"E	L102	114.13'	N50°34'47"W
L72	410.51'	S81°52'12"W	L103	80.25'	N50°34'47"W
L73	216.48'	N84°53'38"W	L104	416.17'	S50°40'13"E
L74	204.61'	N27°03'53"E	L105	436.18'	S50°40'13"E
L75	239.16'	S17°23'48"W	L106	108.98'	S31°16'40"E
L76	61.60'	S28°32'51"E	L107	324.41'	S31°16'40"E
L77	106.67'	S22°18'16"W	L133	183.19'	S46°47'24"E
L78	185.76'	S1°09'57"E	L134	183.19'	S46°47'24"E
L79	440.72'	S17°23'48"W	L139	578.63'	N88°03'22"E
L80	65.46'	S28°32'51"E	L140	450.55'	N88°03'22"E
L81	126.74'	S22°18'16"W	L141	158.24'	N79°25'35"W
L82	178.46'	S1°09'57"E	L142	188.16'	N79°25'35"W
L83	188.56'	S11°25'40"W	L143	286.07'	N27°20'19"W
L84	159.40'	S23°05'19"E	L144	294.38'	N27°20'19"W
L85	173.53'	S11°25'40"W	L145	193.57'	N63°05'00"W
L86	131.19'	S23°05'19"E	L146	185.96'	N63°05'00"W
L87	136.07'	S11°25'34"E	L160	348.87'	S78°46'23"E
L88	220.43'	S9°48'52"W	L161	461.57'	S62°13'16"W

Pg 34
 Vol 2161
 BK 00597797 DR
 Doc 00597797 DR
 FILED AND RECORDED
 OFFICIAL PUBLIC RECORDS
 ON OCT 22, 2003 AT 10:40 AM
 COUNTY OF PARKER, TEXAS
 Instrument Number: 00597797
 Survey
 By: Laura Hanna
 COUNTY OF PARKER, TEXAS
 I hereby certify that this instrument as filed on the date and time stamped hereon is a true and correct copy of the original as recorded in the public records of the county of Parker, Texas.
 Date: Oct 22, 2003
 JANE HANNA, COUNTY CLERK
 PARKER COUNTY, TEXAS
 Scale 1" = 200'
 Graphic Scale in Feet

ENGINEER & SURVEYOR:

 Baird, Hampton & Brown, Inc.
 Engineering & Surveying
 819 Highway 371 East, Ste. 5, Denton, TX 76208 Tel: (817) 379-7700 Fax: (817) 379-7704 E-Mail: qsb@bhbb.com



NUM	DISTANCE	BEARING	NUM	DISTANCE	BEARING	NUM	DISTANCE	BEARING
L2	99.84'	N22°28'02"W	L11	181.54'	S66°16'58"E	L33	149.73'	N44°46'21"E
L3	99.84'	N22°28'02"W	L12	151.54'	S66°16'58"E	L34	149.73'	N44°46'21"E
L4	129.64'	N22°28'02"W	L13	93.25'	S66°16'58"E	L35	110.25'	N44°46'21"E
L5	172.44'	N0°15'23"E	L14	60.81'	N23°43'02"E	L36	39.48'	N44°46'21"E
L6	5.30'	N32°23'15"W	L15	75.25'	N23°43'02"E			
L7	1.76'	N32°23'15"W	L16	134.03'	S23°43'02"W			
L8	3.54'	N32°23'15"W	L17	23.99'	S23°43'02"W			
L9	5.30'	S32°23'15"E	L18	36.33'	S66°16'58"E			
L10	188.02'	N23°43'02"E						

CL 40' R.O.W. EASEMENT NORTH-CEN-TEX GAS COMPANY

NUM	DISTANCE	BEARING
L19	218.75'	N14°14'29"E
L20	191.22'	N38°28'15"E
L21	325.52'	N60°28'55"E
L22	191.12'	N32°02'28"E
L23	967.74'	S00°16'51"W

Plat Cab C-57