

REMUDA RANCH ESTATES

PCA 200

PHASE IV

I Certify This Plat is True And Correct As Surveyed On The Ground June 7, 1974

R. D. Hayes
Registered State Public Surveyor No. 99
Licensed Land Surveyor

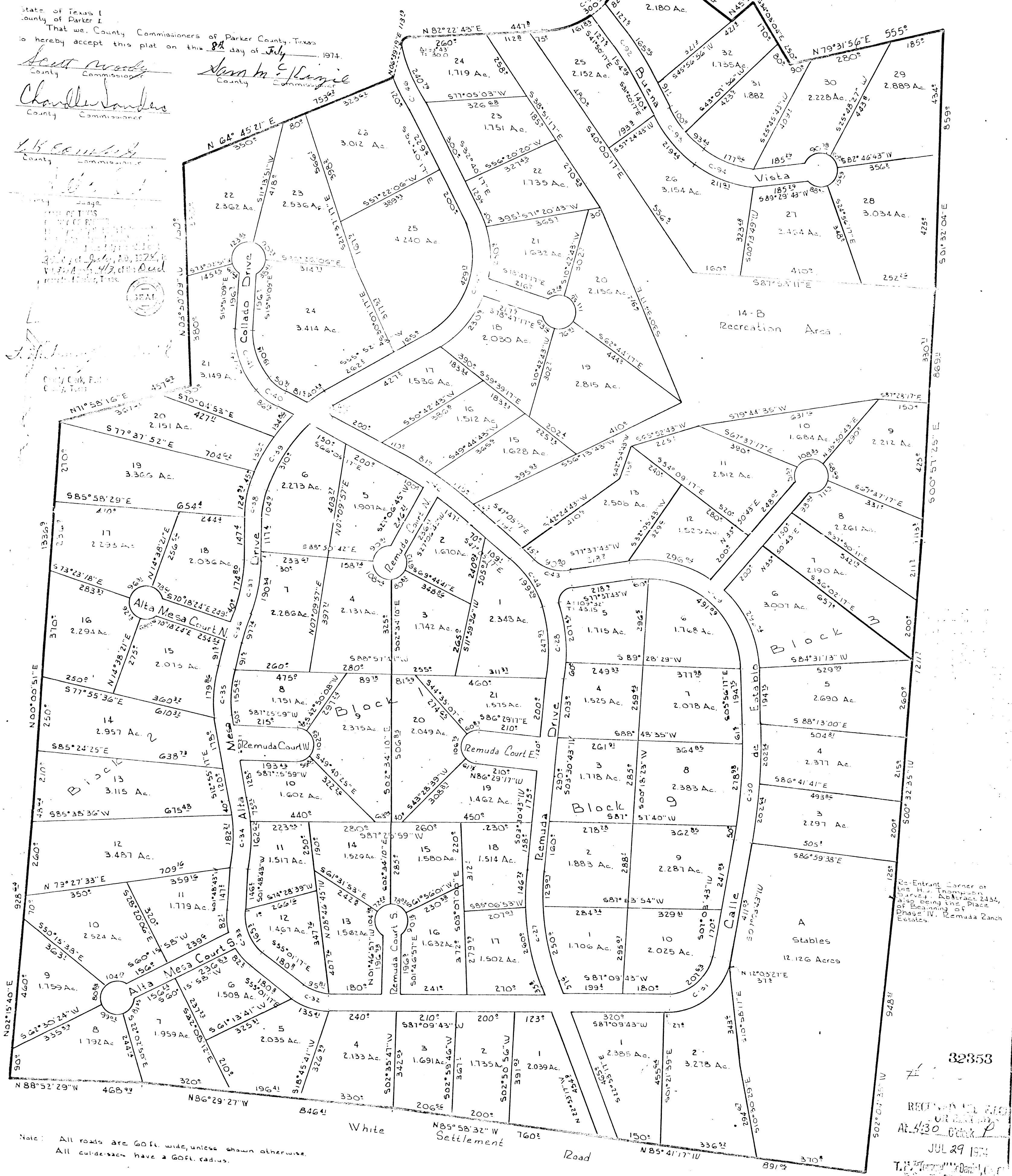
State of Texas
County of Parker
That we, County Commissioners of Parker County, Texas
do hereby accept this plat on this 8th day of July, 1974.

Scott Moody
County Commissioner

Norm M. Rainie
County Commissioner

Charles Sanders
County Commissioner

L. K. ...
County Commissioner



Re-Entrant Corner of ...
...
Phase IV, Remuda Ranch Estates.

32353

RECEIVED JUL 29 1974
AT 4:30 P.M.

JUL 29 1974

By *CR*

Note: All roads are 60ft. wide, unless shown otherwise.
All cul-de-sacs have a 60ft. radius.