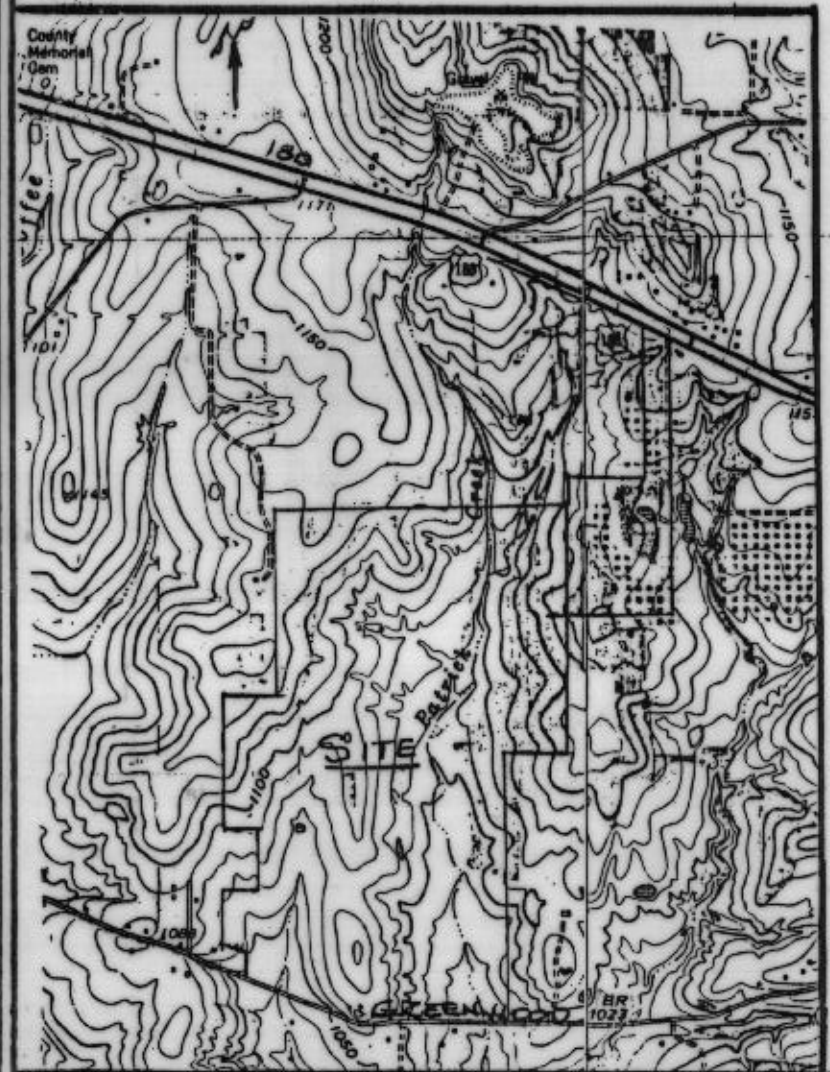
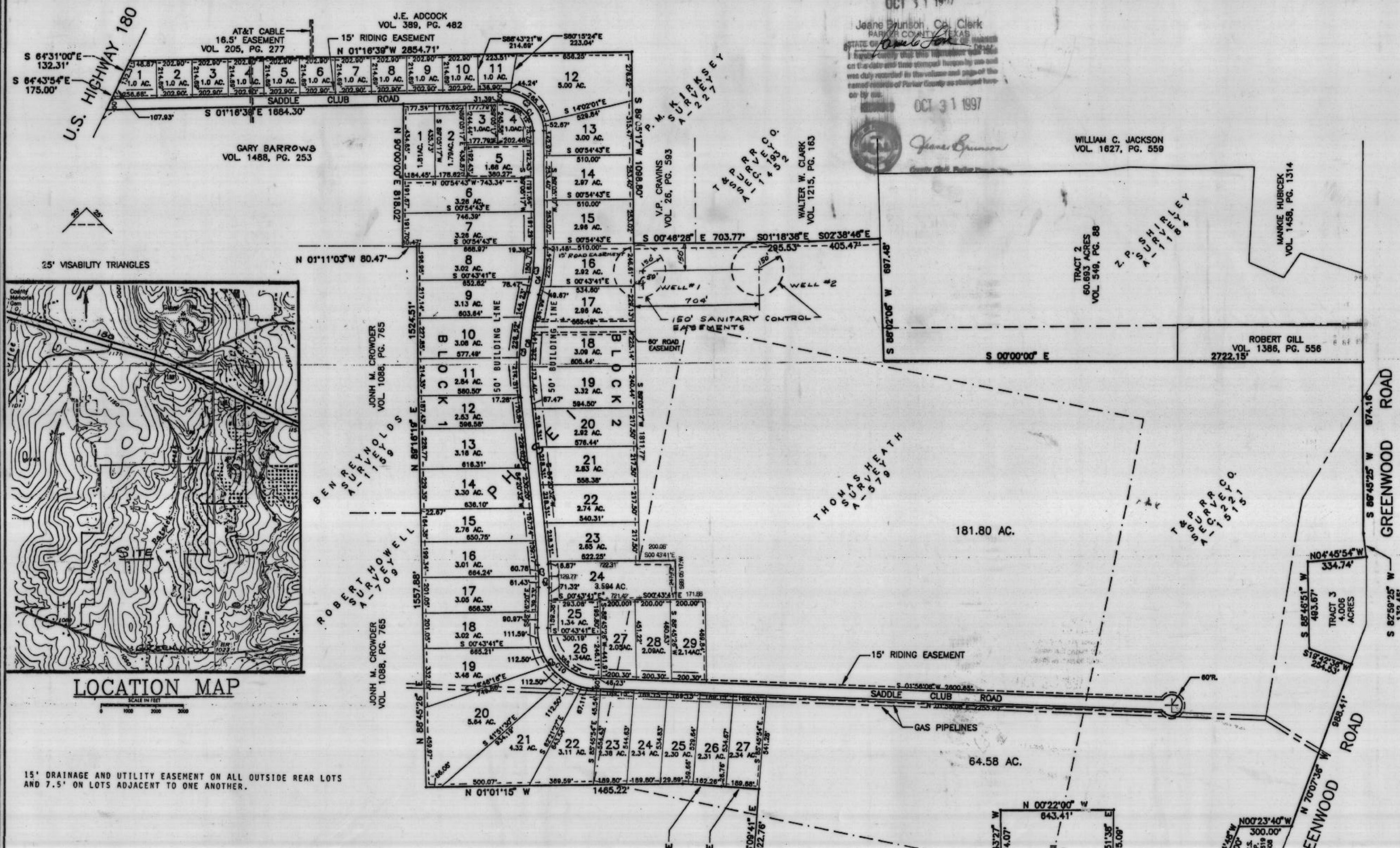




327529
PC B 246
RECEIVED AND FILED
FOR RECORD
11:45 O'Clock
OCT 31 1997
Jeane Brunson, Cl. Clerk
PARKER COUNTY, TEXAS
I solemnly swear that the signature and seal on this date and time stamped hereon by me and was duly recorded in the volume and page of the record books of Parker County as stamped hereon by me.
OCT 31 1997
Jeane Brunson
County Clerk, Parker County, Texas



LOCATION MAP
SCALE IN FEET
0 1000 2000

15' DRAINAGE AND UTILITY EASEMENT ON ALL OUTSIDE REAR LOTS AND 7.5' ON LOTS ADJACENT TO ONE ANOTHER.

CURVE	RADIUS	LENGTH	TANGENT	CHORD	BEARING	DELTA
C1	170.00'	268.12'	171.09'	241.18'	N46°05'41"E	90°21'58"
C2	230.00'	362.75'	231.47'	326.31'	N46°05'41"E	90°21'58"
C3	970.00'	259.17'	130.36'	258.40'	N06°44'33"W	15°18'32"
C4	1030.00'	275.21'	138.43'	274.39'	N06°44'33"W	15°18'32"
C5	1730.00'	605.53'	305.90'	602.45'	S04°22'11"E	2°03'17"
C6	1670.00'	584.53'	295.29'	581.55'	S04°22'11"E	2°03'17"
C7	970.00'	122.21'	61.19'	122.13'	N02°02'54"E	07°13'07"
C8	1030.00'	129.77'	64.97'	129.68'	N02°02'54"E	07°13'07"
C9	330.00'	516.21'	327.85'	465.16'	S43°15'06"W	89°37'32"
C10	270.00'	422.35'	268.24'	380.59'	S43°15'06"W	89°37'32"

JONH M. CROWDER
VOL. 1088, PG. 765

RICHARD COFFY
SURVEY A-239

RONNY R. YEARY
VOL. 1619, PG. 498

BARNETT ENGINEERING, INC.
CONSULTING ENGINEERS - PLANNERS - DESIGNERS
P.O. Box 1485 • Mineral Wells, Texas 76067
(817) 325-9417

FINAL PLAT
OF
2 BLOCKS, 56 LOTS
SADDLE CLUB ESTATES
AT PATRICK CREEK
PARKER COUNTY, TEXAS
JULY, 1997

Page 1 of 2