



LOCATION MAP

B-312
340556

RECEIVED AND FILED
FOR RECORD
10:05 O'Clock A M
JUL 17 1998
Jeane Brunson, Co. Clerk
PARKER COUNTY, TEXAS
By DM Deputy



SCALE
1" = 100'

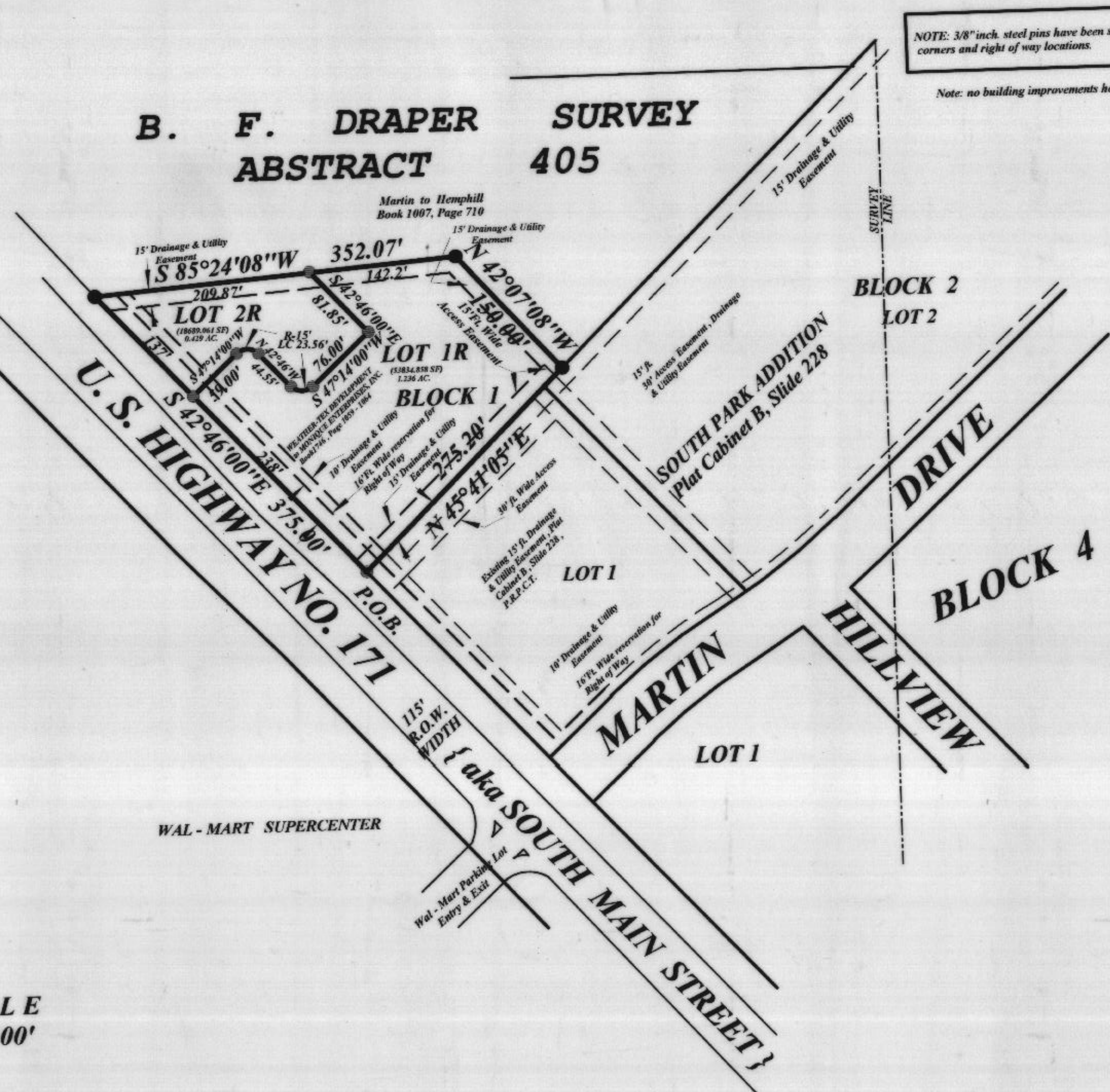
STATE OF TEXAS COUNTY OF PARKER
I hereby certify that this instrument was filed
on the date and time stamped hereon by me and
was duly recorded in the volume and page of the
named records of Parker County as stamped here-
on by me.

RECORDED JUL 17 1998



Jeane Brunson
County Clerk - Parker County, Texas

**B. F. DRAPER SURVEY
ABSTRACT 405**



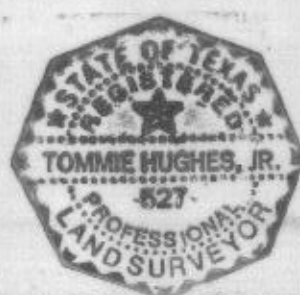
NOTE: 3/8" inch steel pins have been set at all boundary line corners and right of way locations.
Note: no building improvements have been shown

Any development upon any lot, parcel, tract, or replat of Southpark Addition is subject to all subdivision regulations of the City of Weatherford including, but not limited to, provisions for drainage and storm water control as well as the sanitary sewer and accompanying easements and appurtenances.

NOTE: There shall be provided at the intersections of all public streets, 25' ft. visibility triangles as required by section 8.7 of the Subdivision Ordinance of the City of Weatherford.

NOTE: Bearings are correlated with South Park Addition

**LOTS 1R and 2R, BLOCK 1
Being a Replat of
Lot 1, Block 1
SOUTH PARK ADDITION
PHASE 2
an addition in the City of
Weatherford, Parker County,
Texas, according to plat
recorded in Plat Cabinet B,
Slide 242, Plat Records,
Parker County, Texas.**



TOMMIE HUGHES AND ASSOCIATES

Registered Professional Land Surveyors
1414 South Main Street, Weatherford, Texas 76086
(817) 594-5374 or (817) 596-0212

JOB No. 17601
c:\17601mrk.zak

SHEET 1 OF 2